

cue

PRODUCT CATALOG



JANUARY 2008

Table of Contents

cue

Products by Category

Table of Contents

Products by Category	4
Products in Alphabetical Order	5

Product Overview

cuenium Control Panels Overview	8
Touch Panels Overview	10
Controllers Overview	11

Wireless Touch Panels

airCUE-8X26	14
airCUE-8X10	16
airCUE-6X26	18
airCUE-6X10	20
airCUE-6X04	22
airCUE-8X Tabletop Docking Station	24
airCUE-8X Wall Docking Station	25
airCUE-8X Tabletop Stand	26
airCUE-8X Wall Mounting Adapter	27
airCUE-6X Tabletop Docking Station	28
airCUE-6X Wall Docking Station	29
airCUE-6X Tabletop Stand	30
airCUE-6X Wall Mounting Adapter	31

Tabletop Touch Panels

touchCUE-8X22	34
touchCUE-8X02	36
touchCUE-6X22	38
touchCUE-6X02	40
touchCUE-XLV 99	42
touchCUE-LV 99	43
touchCUE-LV	44
touchCUE-L	45
touchCUE-M	46

Built-In Touch Panels

touchCUE-4X02	50
touchCUE-LV /b	52
touchCUE-LV /b Back Box	53
touchCUE-LV /b Rack Mount Panel	53
touchCUE-L /b	54
touchCUE-L /b Back Box	55
touchCUE-L /b Rack Mount Panel	55
touchCUE-M /b	56
touchCUE-M /b Back Box	57
touchCUE-M /b Rack Mount Panel	57
touchCUE-S /b	58
touchCUE-S /b Back Box	59
touchCUE-S /b Rack Mount Panel	59
touchCUE-SX /b	60
touchCUE-SX /b Back Box	60

Wireless Button Panels

irCUE	64
Tx Time Transmitters	66
Tx Element Transmitters	67
Tx Pocket Transmitters	68

Wired Button Panels

keypadCUE-8-L	72
keypadCUE-8-E	73
keypadCUE-1G	74
keypadCUE-2G	75
keypadCUE-3G	76
keyboardCUE-S	77

Special Control Panels

touchCUE-V /i	80
eCUE	81
monitorCUE	82

Controllers

ipCUE-alpha	86
ipCUE-beta	87
ipCUE-gamma	88
ipCUE-delta	89
ipCUE-epsilon	90
ipCUE Rack Mounting Kit	91
IR Adapter /i	91
Opto-Input Adapter /i	91
CUEwire Cable	91
CUEwire Splitter	91
Serial IO Cable /i	91
Serial IO Cable DTE /i	91
Serial IO Cable DCE /i	91
CUEring Cable /i	91
IR Sprayer	92
Universal Serial Cable Adapter	93

Receivers and Transmitters

Wi-Fi Access Point WRT54GL	96
Rx1 DIN /Data Receiver	97
Rx Ext	97
rbaseCUE	98
irCUE Receiver 485	99

Interfaces

soundCUE	102
CUEring Cable /i	103
Control Cable 9-pin	103
O-ring Cable	103

Inputs and Sensors

sensorCUE-W	106
sensorCUE	107
inputCUE	108

Serial Bus Converters

PEC25	112
sbiCUE-DMX	113

Analog Outputs

PEA208	116
--------	-----

Dimmers

PED108	120
PED202	121
PET102	122
PET105	123

Interfaces for Dimming Ballasts

PEF150	126
PEF200	127

Power Switching Units

PER610	130
powerAUX	131

Power Supplies and PoE

CUEadapter /30W	134
CUEadapter /65W	135
PoE Adapter PSA16U	136
PoE Ethernet Switch SRW208MP	137

Software

Software Control Panels	140
CUE Director XPL	141

Products in Alphabetical Order

airCUE-6X04	22	PET102	122
airCUE-6X10	20	PET105	123
airCUE-6X26	18	PoE Adapter PSA16U	136
airCUE-6X Tabletop Docking Station	28	PoE Ethernet Switch SRW208MP	137
airCUE-6X Tabletop Stand	30	powerAUX	131
airCUE-6X Wall Docking Station	29	Products by Category	4
airCUE-6X Wall Mounting Adapter	31	Products in Alphabetical Order	5
airCUE-8X10	16	rbaseCUE	98
airCUE-8X26	14	Rx1 DIN /Data Receiver	97
airCUE-8X Tabletop Docking Station	24	Rx Ext	97
airCUE-8X Tabletop Stand	26	sbiCUE-DMX	113
airCUE-8X Wall Docking Station	25	sensorCUE	107
airCUE-8X Wall Mounting Adapter	27	sensorCUE-W	106
Control Cable 9-pin	103	Serial IO Cable DCE /i	91
Controllers Overview	11	Serial IO Cable DTE /i	91
CUEadapter /30W	134	Serial IO Cable /i	91
CUEadapter /65W	135	Software Control Panels	140
CUE Director XPL	141	soundCUE	102
cue niem Control Panels Overview	8	touchCUE-4X02	50
CUEring Cable /i	91	touchCUE-6X02	40
CUEring Cable /i	103	touchCUE-6X22	38
CUEwire Cable	91	touchCUE-8X02	36
CUEwire Splitter	91	touchCUE-8X22	34
eCUE	81	touchCUE-L	45
inputCUE	108	touchCUE-L /b	54
ipCUE-alpha	86	touchCUE-L /b Back Box	55
ipCUE-beta	87	touchCUE-L /b Rack Mount Panel	55
ipCUE-delta	89	touchCUE-LV	44
ipCUE-epsilon	90	touchCUE-LV 99	43
ipCUE-gamma	88	touchCUE-LV /b	52
ipCUE Rack Mounting Kit	91	touchCUE-LV /b Back Box	53
IR Adapter /i	91	touchCUE-LV /b Rack Mount Panel	53
irCUE	64	touchCUE-M	46
irCUE Receiver 485	99	touchCUE-M /b	56
IR Sprayer	92	touchCUE-M /b Back Box	57
keyboardCUE-S	77	touchCUE-M /b Rack Mount Panel	57
keypadCUE-1G	74	touchCUE-S /b	58
keypadCUE-2G	75	touchCUE-S /b Back Box	59
keypadCUE-3G	76	touchCUE-S /b Rack Mount Panel	59
keypadCUE-8-E	73	touchCUE-SX /b	60
keypadCUE-8-L	72	touchCUE-SX /b Back Box	60
monitorCUE	82	touchCUE-V /i	80
Opto-Input Adapter /i	91	touchCUE-XLV 99	42
O-ring Cable	103	Touch Panels Overview	10
PEA208	116	Tx Element Transmitters	67
PEC25	112	Tx Pocket Transmitters	68
PED108	120	Tx Time Transmitters	66
PED202	121	Universal Serial Cable Adapter	93
PEF150	126	Wi-Fi Access Point WRT54GL	96
PEF200	127		
PER610	130		

Product Overview

cue

cuenium Control Panels Overview



cuenium is a name of design line of control panels which currently includes wireless and wired touch panels 3.5", 6.4" and 8.4", wired keypads and wireless IR remote. All panels offer maximum usage, function and installation flexibility. Selected wireless and wired touch panels offer new feature - MPEG-4 streaming video preview from two sources at one time.

The main features of cuenium line-up are

- Selected touch panels with streamed video preview (MPEG-4)
- Wireless & wired touch panels
- Wireless & wired button panels
- Both Ethernet & Wi-Fi communication
- Fully compatible with ipCUE controllers
- Distinctive form – singular elegance – unified design
- On-wall mounting compatible with European electrical wall boxes
- Charging and mounting accessories.

WIRELESS TOUCH PANELS



airCUE-8X26



airCUE-8X10



airCUE-6X26



airCUE-6X10



airCUE-6X04

WIRED TOUCH PANELS



touchCUE-8X22



touchCUE-8X02



touchCUE-6X22



touchCUE-6X02



touchCUE-4X02

WIRED BUTTON PANELS



keypadCUE-8-L



keypadCUE-8-E

WIRELESS BUTTON PANELS



irCUE

			Display Size, Resolution			Buttons	Audio		Video		System Communication				Enclosure		Power Supply	
			3.5", 320 x 240	6.4", 640 x 480	8.4", 800 x 600		Built-in microphone	Built-in speaker	MPEG-4 streaming preview	Composite / S-video	10/100 BaseT LAN	CUEwire	Wi-Fi	Infra-red	RF 433 MHz	Stainless steel - wood	Stainless steel - plastic	Power Over Ethernet (PoE)
Wireless Touch Panels	airCUE-8X26	CS0322		•		4	•	•	•	(1)	•		•		•	•	•	
	airCUE-8X10	CS0300			•	4	•	•			•		•		•	•	•	•
	airCUE-6X26	CS0323		•		4	•	•	•	(1)	•		•		•	•	•	
	airCUE-6X10	CS0305		•		4	•	•			•		•		•	•	•	•
	airCUE-6X04	CS0326		•		4	•	•			•			•	•	•	•	•
Wired Touch Panels	touchCUE-8X22	CS0329			•	4	•	•	•	(1)	•				•	•	•	•
	touchCUE-8X02	CS0285			•	4	•	•			•				•	•	•	•
	touchCUE-6X22	CS0330		•		4	•	•	•	(1)	•				•	•	•	•
	touchCUE-6X02	CS0286		•		4	•	•			•				•	•	•	•
	touchCUE-4X02	CS0326		•		4					•					•	•	•
Wired Button Panels	keypadCUE-8-L	CS0287				8						•			•	•		•
	keypadCUE-8-E	CS0288				8						•			•	•		•
Wireless Button Panels	irCUE	CS0324				33							•		•	•	•	

Notes:

(1) For analog video connection it is necessary use video server, which provides video compression into MPEG-4 and simultaneously deliver stream via Ethernet.

Touch Panels Overview

				Display Size, Resolution	Colors	Audio	Video	System Communication	Enclosure	Power Supply
Wireless	airCUE-8X26	CS0322	<i>cuertium</i>	3.5", 320 x 240	65 536 - High Color	Built-in microphone	(1)	10/100 BaseT Ethernet	Stainless steel - wood	Power Over Ethernet (PoE)
	airCUE-8X10	CS0300	<i>cuertium</i>	5.7", 320 x 240		Built-in speaker		CUEwire	Stainless steel - plastic	24 VDC
	airCUE-6X26	CS0323	<i>cuertium</i>	6.4", 640 x 480			MPEG-4 streaming preview	Wi-Fi		
	airCUE-6X10	CS0305	<i>cuertium</i>	8.4", 800 x 600			Composite / S-video inputs	RF 433 MHz		
	airCUE-6X04	CS0321	<i>cuertium</i>	10.4", 640 x 480						
Wired Tabletop	touchCUE-8X22	CS0329	<i>cuertium</i>				(1)			
	touchCUE-8X02	CS0285	<i>cuertium</i>							
	touchCUE-6X22	CS0330	<i>cuertium</i>				(1)			
	touchCUE-6X02	CS0286	<i>cuertium</i>							
	touchCUE-XLV 99	CS0261-V					2/1			
	touchCUE-LV 99	CS0234-V					2/1			
	touchCUE-LV	CS0236-V					2/1			
	touchCUE-L	CS0236								
	touchCUE-M	CS0237								
Wired Built-In	touchCUE-4X02	CS0326	<i>cuertium</i>							
	touchCUE-LV /b	CS0238-V					2/1			
	touchCUE-L /b	CS0238								
	touchCUE-M /b	CS0239								
	touchCUE-S /b	CS0241								
	touchCUE-SX /b	CS0266								
Special	touchCUE-V /i	CS0190		Max. 1024 x 768 pixels			2/1			
	eCUE	CS0173								






Notes:

(1) For analog video connection it is necessary use video server, which provides video compression into MPEG-4 and simultaneously deliver stream via Ethernet.

Controllers Overview

The ipCUE family is a new generation of Ethernet IP enabled controllers. These controllers are well suited from single-room to huge multi-room, multi-floor distributed control applications. All models come with multiple control ports well suited for home applications as well as commercial. The control ports include bi-directional serial ports configurable as RS-232/422/485, serial outputs, infrared outputs up to 1.2 MHz, general I/O ports that can be configured as digital outputs or analog inputs, and 24 volts relay outputs. The Ethernet port allows for bi-directional IP control of any manufacturer IP enabled products. The ipCUEs are compatible with CUE range of button panels and touch panels through and comes equipped with a CUEwire port. The ipCUE-alpha, ipCUE-beta, ipCUE-delta and ipCUE-epsilon are

equipped with internal IR sensors which allow capture IR codes and receive IR codes from hand-held transmitters. Convenient for testing and troubleshooting all models also come with indicator LEDs on the front panel that indicate the status of all the control ports. The ipCUEs keep perfect time with its onboard real time clock (RTC) and thus allowing for a wide variety of distributed intelligence scheduling applications. All ipCUE controllers come complete with a web-server and allows for setup, configuration, and testing through a standard web browser. This web-based interface allows for the graphical monitoring and control of all ports, which provides a truly time saving method for testing and troubleshooting.

			10/100 BaseT Ethernet	CUEwire	Bi-directional serial RS-232	Bi-directional serial RS-232/422/485	IR/serial output (IR up to 1.2 MHz)	General I/O	Analog output 0 – 10 V	Relay 24 V / 0.5 A	Power output 5 VDC	Internal IR sensor / IR capture	LED indicators	Reset / Set factory default button	Real time and date	Power supply	Power consumption
ipCUE-alpha	CS0251		•	•	2	4	8	8		2	1	•	•	•	•	24 V	12 W
ipCUE-beta	CS0252		•	•	2		8				1	•	•	•	•	24 V	10 W
ipCUE-gamma	CS0253		•	•	2		2	8		2			•	•	•	24 V	10 W
ipCUE-delta	CS0267		•	•	2	4	8	8	4	16	1	•	•	•	•	24 V	18 W
ipCUE-epsilon	CS0268		•	•	2		8	8	4	8	1	•	•	•	•	24 V	15 W

Wireless Touch Panels

cue



SPECIFICATIONS

Touch-screen display

Active matrix color LCD
 Size 8.4" / 213 mm diagonal, aspect ratio 4:3
 Resolution 800 x 600 pixels, 65 536 colors (High Color)
 Resistive membrane touch overlay

Built-in sensors

Light sensor for automatic backlight dimming
 Motion sensor for automatic backlight switch on

Buttons

Power, Reset / Set factory default, 4x programmable

LED indicators

Power
 Blue indicates power on
 Green indicates external power supply
 Red indicates charging of battery pack
 Wi-Fi (yellow/green) indicates wireless network

Memory

128 MB RAM
 microSD Card min. 1 GB (upgradeable)

Software technologies

Admin Web, MPEG-4 video player

Video

MPEG-4 streaming video preview

Audio

Built-in microphone, built-in mono speaker

System communication

10/100 BaseT LAN, RJ-45 connector
 Wireless network, IEEE 802.11b/g Wi-Fi 2.4 GHz

Power supply

Power over Ethernet (PoE), IEEE 802.3af compatible
 Built-in Li-Ion rechargeable battery pack

Physical

Stainless steel – solid wood or plastic enclosure
 Dimensions 263 x 175 x 25 mm / 10.4" x 6.9" x 1.0"
 Weight 1.5 kg / 3.3 lb

Operating environment

Temperature 10° to 40° C
 Humidity 10% to 90% non-condensing

MAIN FEATURES

- 8.4" active matrix touch screen display 800 x 600 pixels
- 802.11b/g Wi-Fi 2-way wireless communication
- Wired Ethernet connection
- MPEG-4 streaming video preview
- Power over Ethernet (PoE) IEEE 802.3af compatible
- Battery charging from Power over Ethernet
- Four programmable buttons
- Web server and Admin Web pages for setup and diagnostics
- Built-in microphone and speaker
- Built-in light and motion sensors
- Internal Li-Ion rechargeable battery pack
- Wireless, wired tabletop and wired wall mounting usage
- Tabletop and wall docking stations for charging

DESCRIPTION

The airCUE-8X26 is superior touch panel caters to the full integration of lifestyle as well as work style. It combines functionality such as multimedia integration, lighting automation, security monitoring, entertainment integration, and meeting & presentation control. From living room to garden, boardroom to break-room, anywhere there is wireless LAN, airCUE-8X26 puts them in control and keeps them connected to the world. The long battery life and quick charger keep them wireless with fewer pit stops. The 8.4" active matrix touch screen display offers resolution 800 x 600 pixels and it produces stunning high color images. The airCUE-8X26 allows to view cameras and other video sources using MPEG-4. Wired Ethernet connection provides easy network integration. The touch panel is equipped with Power over Ethernet (PoE) - technology enabling an Ethernet network cable to deliver both data and power. Fully compatible with CUE controllers, this touch panel provides the ultimate one-touch solution for meeting rooms, conference rooms, boardrooms and high-tech homes. Flexible tabletop or wall installation can be done using four types of accessories.

APPLICATIONS

- Security and video surveillance systems
- Commercial huge multi-room and multi-floor distributed systems
- Complete residential home automation
- High-tech homes
- High-end home theaters
- Commercial single-room applications
- Meeting rooms, conference rooms, boardrooms



airCUE-8X26 at Tabletop Docking Station

STANDARD BOX CONTENTS

Touch panel
Stylus
Ethernet cable straight-through
Ethernet cable crossed-over
PoE injector incl. power cable
Cleaning tissue
Warranty Conditions, CE Declaration, RoHS Declaration
Touch Panel Data Sheet
Cue System Connector Wiring Sheet
CUE Application CD

ORDER INFORMATION

Product codes

CS0322-001 wooden enclosure, white birch
CS0322-002 wooden enclosure, oak
CS0322-003 wooden enclosure, mahogany
CS0322-004 plastic enclosure, stardust black
CS0322-005 plastic enclosure, abrasive white



Other wooden enclosures are available on request.

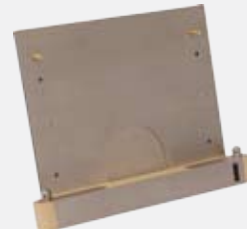
ACCESSORIES FOR FLEXIBLE INSTALLATION

Flexible tabletop or wall installation can be done using four types of accessories. Each panel comes with a power supply, which makes it possible to quickly recharge the built-in battery. A more comfortable way of recharging is through the Tabletop Docking Station. The Wall Docking Station, designed for fix installation on the wall, allows the touch panel can be recharged at a most convenient place. If the panel is placed at any of the docking stations, it remains functional and can be used as a tabletop or a wall-installed touch panel. The Wall Mounting Adapter has been designed for fixed installation on the wall. It does not need any

special back box built in the wall. It is installed with three screws above the standard European electrical wall box or directly above the cable outlet. Here the touch panel is fixed by means of four fixtures. The whole system is therefore not built into the wall, as is the case in classical built-in touch panels. Another piece of provided accessories is the Tabletop Stand, which is to be mounted to the back panel with two screws. Then the touch panel can be used as a classical wired or wireless tabletop panel. If Power over Ethernet (PoE) is used, only one cable leads to the panel. For more details please see appropriate Product Cut Sheets.



airCUE-8X Tabletop Docking Station, CS0301



airCUE-8X Wall Docking Station, CS0302



airCUE-8X Tabletop Stand, CS0303



airCUE-8X Wall Mounting Adapter, CS0304



MAIN FEATURES

- 8.4" active matrix touch screen display 800 x 600 pixels
- 802.11b/g Wi-Fi 2-way wireless communication
- Wired Ethernet connection
- Power over Ethernet (PoE) IEEE 802.3af compatible
- Battery charging from Power over Ethernet
- Four programmable buttons
- Web server and Admin Web pages for setup and diagnostics
- Built-in microphone and speaker
- Built-in light and motion sensors
- Internal Li-Ion rechargeable battery pack
- Wireless, wired tabletop and wired wall mounting usage
- Tabletop and wall docking stations for charging

SPECIFICATIONS

Touch-screen display

Active matrix color LCD
Size 8.4" / 213 mm diagonal, aspect ratio 4:3
Resolution 800 x 600 pixels, 65 536 colors (High Color)
Resistive membrane touch overlay

Built-in sensors

Light sensor for automatic backlight dimming
Motion sensor for automatic backlight switch on

Buttons

Power, Reset / Set factory default, 4x programmable

LED indicators

Power
Blue indicates power on
Green indicates external power supply
Red indicates charging of battery pack
Wi-Fi (yellow/green) indicates wireless network

Memory

64 MB RAM
CompactFlash Card min. 512 MB (upgradeable)

Software technologies

Admin Web

Audio

Built-in microphone, built-in mono speaker

System communication

10/100 BaseT Ethernet, RJ-45 connector
Wireless network, IEEE 802.11b/g Wi-Fi 2.4 GHz

Power supply

24 VDC (+/- 20%), 13 W, power jack connector
Power over Ethernet (PoE), IEEE 802.3af compatible
Built-in Li-Ion rechargeable battery pack

Physical

Stainless steel – solid wood or plastic enclosure
Dimensions 263 x 175 x 25 mm / 10.4" x 6.9" x 1.0"
Weight 1.5 kg / 3.3 lb

Operating environment

Temperature 10° to 40° C
Humidity 10% to 90% non-condensing

DESCRIPTION

The airCUE-8X10 is superior touch panel caters to the full integration of lifestyle as well as work style. It combines functionality such as multimedia integration, lighting automation, security monitoring, entertainment integration, and meeting & presentation control. Unleashed by Wi-Fi this classical beauty touch panel gives professional presenters and homeowners the wireless freedom that they love. From living room to garden, boardroom to break-room, anywhere there is wireless network, airCUE-8X10 puts them in control and keeps them connected to the world. The long battery life and quick charger keep them wireless with fewer pit stops. The 8.4" active matrix touch screen display offers resolution 800 x 600 pixels and it produces stunning high color images. Innovative design features like min. 512 MB of standard data storage provides a level of capability not available with other similar touch panels. Wired Ethernet connection provides easy network integration. The touch panel is equipped with Power over Ethernet (PoE) - technology enabling an Ethernet network cable to deliver both data and power. Fully compatible with CUE controllers, this touch panel provides the ultimate one-touch solution for meeting rooms, conference rooms, boardrooms and high-tech homes.

APPLICATIONS

- Commercial single-room applications
- Meeting rooms, conference rooms, boardrooms
- Commercial huge multi-room and multi-floor distributed systems
- Complete residential home automation
- High-tech homes
- High-end home theaters

STANDARD BOX CONTENTS

Touch panel
Stylus
Ethernet cable straight-through
Ethernet cable crossed-over
CUEadapter /30W incl. power cable
Cleaning tissue
Warranty Conditions, CE Declaration, RoHS Declaration
Touch Panel Data Sheet
Cue System Connector Wiring Sheet
CUE Application CD

ORDER INFORMATION

Product codes

CS0300-001 wooden enclosure, white birch
CS0300-002 wooden enclosure, oak
CS0300-003 wooden enclosure, mahogany
CS0300-004 plastic enclosure, stardust black
CS0300-005 plastic enclosure, abrasive white



Other wooden enclosures are available on request.

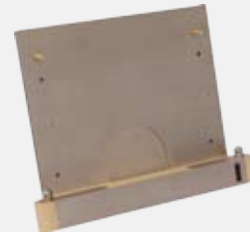
ACCESSORIES FOR FLEXIBLE INSTALLATION

Flexible tabletop or wall installation can be done using four types of accessories. Each panel comes with a power supply, which makes it possible to quickly recharge the built-in battery. A more comfortable way of recharging is through the Tabletop Docking Station. The Wall Docking Station, designed for fix installation on the wall, allows the touch panel can be recharged at a most convenient place. If the panel is placed at any of the docking stations, it remains functional and can be used as a tabletop or a wall-installed touch panel. The Wall Mounting Adapter has been designed for fixed installation on the wall. It does not need any

special back box built in the wall. It is installed with three screws above the standard European electrical wall box or directly above the cable outlet. Here the touch panel is fixed by means of four fixtures. The whole system is therefore not built into the wall, as is the case in classical built-in touch panels. Another piece of provided accessories is the Tabletop Stand, which is to be mounted to the back panel with two screws. Then the touch panel can be used as a classical wired or wireless tabletop panel. If Power over Ethernet (PoE) is used, only one cable leads to the panel. For more details please see appropriate Product Cut Sheets.



airCUE-8X Tabletop Docking Station, CS0301



airCUE-8X Wall Docking Station, CS0302



airCUE-8X Tabletop Stand, CS0303



airCUE-8X Wall Mounting Adapter, CS0304



SPECIFICATIONS

Touch-screen display

- Active matrix color LCD
- Size 6.4" / 162 mm diagonal, aspect ratio 4:3
- Resolution 640 x 480 pixels, 65 536 colors (High Color)
- Resistive membrane touch overlay

Built-in sensors

- Light sensor for automatic backlight dimming
- Motion sensor for automatic backlight switch on

Buttons

- Power, Reset / Set factory default, 4x programmable

LED indicators

- Power
 - Blue indicates power on
 - Green indicates external power supply
 - Red indicates charging of battery pack
- Wi-Fi (yellow/green) indicates wireless network

Memory

- 128 MB RAM
- microSD Card min. 1 GB (upgradeable)

Software technologies

- Admin Web, MPEG-4 video player

Video

- MPEG-4 streaming video preview

Audio

- Built-in microphone, built-in mono speaker

System communication

- 10/100 BaseT LAN, RJ-45 connector
- Wireless network, IEEE 802.11b/g Wi-Fi 2.4 GHz

Power supply

- Power over Ethernet (PoE), IEEE 802.3af compatible
- Built-in Li-Ion rechargeable battery pack

Physical

- Stainless steel – solid wood or plastic enclosure
- Dimensions 216 x 145 x 25 mm / 8.5" x 5.7" x 1.0"
- Weight 1.2 kg / 2.7 lb

Operating environment

- Temperature 10° to 40° C
- Humidity 10% to 90% non-condensing

MAIN FEATURES

- 6.4" active matrix touch screen display 640 x 480 pixels
- 802.11b/g Wi-Fi 2-way wireless communication
- Wired Ethernet connection
- MPEG-4 streaming video preview
- Power over Ethernet (PoE) IEEE 802.3af compatible
- Battery charging from Power over Ethernet
- Four programmable buttons
- Web server and Admin Web pages for setup and diagnostics
- Built-in microphone and speaker
- Built-in light and motion sensors
- Internal Li-Ion rechargeable battery pack
- Wireless, wired tabletop and wired wall mounting usage
- Tabletop and wall docking stations for charging

DESCRIPTION

The airCUE-6X26 is superior touch panel caters to the full integration of lifestyle as well as work style. It combines functionality such as multimedia integration, lighting automation, security monitoring, entertainment integration, and meeting & presentation control. From living room to garden, boardroom to break-room, anywhere there is wireless LAN, airCUE-6X26 puts them in control and keeps them connected to the world. The long battery life and quick charger keep them wireless with fewer pit stops. The 6.4" active matrix touch screen display offers resolution 640 x 480 pixels and it produces stunning high color images. The airCUE-6X26 allows to view cameras and other video sources using MPEG-4. Wired Ethernet connection provides easy network integration. The touch panel is equipped with Power over Ethernet (PoE) - technology enabling an Ethernet network cable to deliver both data and power. Fully compatible with CUE controllers, this touch panel provides the ultimate one-touch solution for meeting rooms, conference rooms, boardrooms and high-tech homes. Flexible tabletop or wall installation can be done using four types of accessories.

APPLICATIONS

- Security and video surveillance systems
- Commercial huge multi-room and multi-floor distributed systems
- Complete residential home automation
- High-tech homes
- High-end home theaters
- Commercial single-room applications
- Meeting rooms, conference rooms, boardrooms



airCUE-6X26 at Tabletop Docking Station

STANDARD BOX CONTENTS

Touch panel
Stylus
Ethernet cable straight-through
Ethernet cable crossed-over
CUEadapter /30W incl. power cable
Cleaning tissue
Warranty Conditions, CE Declaration, RoHS Declaration
Touch Panel Data Sheet
Cue System Connector Wiring Sheet
CUE Application CD

ORDER INFORMATION

Product codes

CS0323-001 wooden enclosure, white birch
CS0323-002 wooden enclosure, oak
CS0323-003 wooden enclosure, mahogany
CS0323-004 plastic enclosure, stardust black
CS0323-005 plastic enclosure, abrasive white



Other wooden enclosures are available on request.

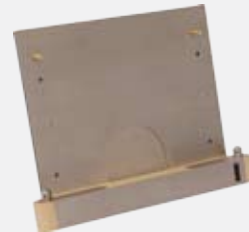
ACCESSORIES FOR FLEXIBLE INSTALLATION

Flexible tabletop or wall installation can be done using four types of accessories. Each panel comes with a power supply, which makes it possible to quickly recharge the built-in battery. A more comfortable way of recharging is through the Tabletop Docking Station. The Wall Docking Station, designed for fix installation on the wall, allows the touch panel can be recharged at a most convenient place. If the panel is placed at any of the docking stations, it remains functional and can be used as a tabletop or a wall-installed touch panel. The Wall Mounting Adapter has been designed for fixed installation on the wall. It does not need any

special back box built in the wall. It is installed with three screws above the standard European electrical wall box or directly above the cable outlet. Here the touch panel is fixed by means of four fixtures. The whole system is therefore not built into the wall, as is the case in classical built-in touch panels. Another piece of provided accessories is the Tabletop Stand, which is to be mounted to the back panel with two screws. Then the touch panel can be used as a classical wired or wireless tabletop panel. If Power over Ethernet (PoE) is used, only one cable leads to the panel. For more details please see appropriate Product Cut Sheets.



airCUE-6X Tabletop Docking Station, CS0306



airCUE-6X Wall Docking Station, CS0307



airCUE-6X Tabletop Stand, CS0308



airCUE-6X Wall Mounting Adapter, CS0309



MAIN FEATURES

- 6.4" active matrix touch screen display 640 x 480 pixels
- 802.11b/g Wi-Fi 2-way wireless communication
- Wired Ethernet connection
- Power over Ethernet (PoE) IEEE 802.3af compatible
- Battery charging from Power over Ethernet
- Four programmable buttons
- Web server and Admin Web pages for setup and diagnostics
- Built-in microphone and speaker
- Built-in light and motion sensors
- Internal Li-Ion rechargeable battery pack
- Wireless, wired tabletop and wired wall mounting usage
- Tabletop and wall docking stations for charging

SPECIFICATIONS

Touch-screen display

Active matrix color LCD
 Size 6.4" / 162 mm diagonal, aspect ratio 4:3
 Resolution 640 x 480 pixels, 65 536 colors (High Color)
 Resistive membrane touch overlay

Built-in sensors

Light sensor for automatic backlight dimming
 Motion sensor for automatic backlight switch on

Buttons

Power, Reset / Set factory default, 4x programmable

LED indicators

Power
 Blue indicates power on
 Green indicates external power supply
 Red indicates charging of battery pack
 Wi-Fi (yellow/green) indicates wireless network

Memory

64 MB RAM
 CompactFlash Card min. 512 MB (upgradeable)

Software technologies

Admin Web

Audio

Built-in microphone, built-in mono speaker

System communication

10/100 BaseT LAN, RJ-45 connector
 Wireless network, IEEE 802.11b/g Wi-Fi 2.4 GHz

Power supply

24 VDC (+/- 20%), 11 W, power jack connector
 Power over Ethernet (PoE), IEEE 802.3af compatible
 Built-in Li-Ion rechargeable battery pack

Physical

Stainless steel – solid wood or plastic enclosure
 Dimensions 216 x 145 x 25 mm / 8.5" x 5.7" x 1.0"
 Weight 1.2 kg / 2.7 lb

Operating environment

Temperature 10° to 40° C
 Humidity 10% to 90% non-condensing

DESCRIPTION

The airCUE-6X10 is superior touch panel caters to the full integration of lifestyle as well as work style. It combines functionality such as multimedia integration, lighting automation, security monitoring, entertainment integration, and meeting & presentation control. Unleashed by Wi-Fi this classical beauty touch panel gives professional presenters and homeowners the wireless freedom that they love. From living room to garden, boardroom to break-room, anywhere there is wireless network, airCUE-6X10 puts them in control and keeps them connected to the world. The long battery life and quick charger keep them wireless with fewer pit stops. The 6.4" active matrix touch screen display offers resolution 640 x 480 pixels and it produces stunning high color images. Innovative design features like min. 512 MB of standard data storage provides a level of capability not available with other similar touch panels. Wired Ethernet connection provides easy network integration. The touch panel is equipped with Power over Ethernet (PoE) - technology enabling an Ethernet network cable to deliver both data and power. Fully compatible with CUE controllers, this touch panel provides the ultimate one-touch solution for meeting rooms, conference rooms, boardrooms and high-tech homes. Flexible tabletop or wall installation can be done using four types of accessories.

APPLICATIONS

- Commercial single-room applications
- Meeting rooms, conference rooms, boardrooms
- Commercial huge multi-room and multi-floor distributed systems
- Complete residential home automation
- High-tech homes
- High-end home theaters

STANDARD BOX CONTENTS

Touch panel
Stylus
Ethernet cable straight-through
Ethernet cable crossed-over
CUEadapter /30W incl. power cable
Cleaning tissue
Warranty Conditions, CE Declaration, RoHS Declaration
Touch Panel Data Sheet
Cue System Connector Wiring Sheet
CUE Application CD

ORDER INFORMATION

Product codes

CS0305-001 wooden enclosure, white birch
CS0305-002 wooden enclosure, oak
CS0305-003 wooden enclosure, mahogany
CS0305-004 plastic enclosure, stardust black
CS0305-005 plastic enclosure, abrasive white



Other wooden enclosures are available on request.

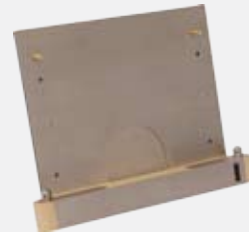
ACCESSORIES FOR FLEXIBLE INSTALLATION

Flexible tabletop or wall installation can be done using four types of accessories. Each panel comes with a power supply, which makes it possible to quickly recharge the built-in battery. A more comfortable way of recharging is through the Tabletop Docking Station. The Wall Docking Station, designed for fix installation on the wall, allows the touch panel can be recharged at a most convenient place. If the panel is placed at any of the docking stations, it remains functional and can be used as a tabletop or a wall-installed touch panel. The Wall Mounting Adapter has been designed for fixed installation on the wall. It does not need any

special back box built in the wall. It is installed with three screws above the standard European electrical wall box or directly above the cable outlet. Here the touch panel is fixed by means of four fixtures. The whole system is therefore not built into the wall, as is the case in classical built-in touch panels. Another piece of provided accessories is the Tabletop Stand, which is to be mounted to the back panel with two screws. Then the touch panel can be used as a classical wired or wireless tabletop panel. If Power over Ethernet (PoE) is used, only one cable leads to the panel. For more details please see appropriate Product Cut Sheets.



airCUE-6X Tabletop Docking Station, CS0306



airCUE-6X Wall Docking Station, CS0307



airCUE-6X Tabletop Stand, CS0308



airCUE-6X Wall Mounting Adapter, CS0309



SPECIFICATIONS

Touch-screen display

Active matrix color LCD
 Size 6.4" / 162 mm diagonal, aspect ratio 4:3
 Resolution 640 x 480 pixels, 65 536 colors (High Color)
 Resistive membrane touch overlay

Built-in sensors

Light sensor for automatic backlight dimming
 Motion sensor for automatic backlight switch on

Buttons

Power, Reset / Set factory default, 4x programmable

LED indicators

Power
 Blue indicates power on
 Green indicates external power supply
 Red indicates charging of battery pack
 RF (yellow/green) indicates wireless communication

Memory

64 MB RAM
 CompactFlash Card min. 512 MB (upgradeable)

Software technologies

Admin Web

Audio

Built-in microphone, built-in mono speaker

System communication

10/100 BaseT LAN, RJ-45 connector
 Two-way radio, frequency 433 MHz, internal antenna

Power supply

24 VDC (+/- 20%), 11 W, power jack connector
 Power over Ethernet (PoE), IEEE 802.3af compatible
 Built-in Li-Ion rechargeable battery pack

Physical

Stainless steel – solid wood or plastic enclosure
 Dimensions 216 x 145 x 25 mm / 8.5" x 5.7" x 1.0"
 Weight 1.2 kg / 2.7 lb

Operating environment

Temperature 10° to 40° C
 Humidity 10% to 90% non-condensing

MAIN FEATURES

- 6.4" active matrix touch screen display 640 x 480 pixels
- Two-way wireless radio communication 433 MHz
- Wired Ethernet connection
- Power over Ethernet (PoE) IEEE 802.3af compatible
- Battery charging from Power over Ethernet
- Four programmable buttons
- Web server and Admin Web pages for setup and diagnostics
- Built-in microphone and speaker
- Built-in light and motion sensors
- Internal Li-Ion rechargeable battery pack
- Wireless, wired tabletop and wired wall mounting usage
- Tabletop and wall docking stations for charging

DESCRIPTION

The airCUE-6X04 is superior touch panel caters to the full integration of lifestyle as well as work style. It combines functionality such as multimedia integration, lighting automation, security monitoring, entertainment integration, and meeting & presentation control. Unleashed by two-way wireless radio communication this classical beauty touch panel gives professional presenters and homeowners the wireless freedom that they love. The long battery life and quick charger keep them wireless with fewer pit stops. The 6.4" active matrix touch screen display offers resolution 640 x 480 pixels and it produces stunning high color images. Innovative design features like min. 512 MB of standard data storage provides a level of capability not available with other similar touch panels. Wired Ethernet connection provides easy network integration. The touch panel is equipped with Power over Ethernet (PoE) - technology enabling an Ethernet network cable to deliver both data and power. Fully compatible with CUE controllers, this touch panel provides the ultimate one-touch solution for meeting rooms, conference rooms, boardrooms and high-tech homes. Flexible tabletop or wall installation can be done using four types of accessories.

APPLICATIONS

- Commercial single-room applications
- Meeting rooms, conference rooms, boardrooms
- Commercial huge multi-room and multi-floor distributed systems
- Complete residential home automation
- High-tech homes
- High-end home theaters

STANDARD BOX CONTENTS

Touch panel
Stylus
Ethernet cable straight-through
Ethernet cable crossed-over
CUEadapter /30W incl. power cable
Cleaning tissue
Warranty Conditions, CE Declaration, RoHS Declaration
Touch Panel Data Sheet
Cue System Connector Wiring Sheet
CUE Application CD

ORDER INFORMATION

Product code
CS0321-004 plastic enclosure, stardust black

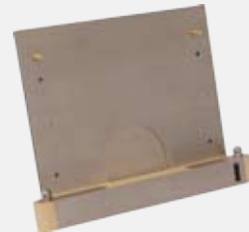
ACCESSORIES FOR FLEXIBLE INSTALLATION

Flexible tabletop or wall installation can be done using four types of accessories. Each panel comes with a power supply, which makes it possible to quickly recharge the built-in battery. A more comfortable way of recharging is through the Tabletop Docking Station. The Wall Docking Station, designed for fix installation on the wall, allows the touch panel can be recharged at a most convenient place. If the panel is placed at any of the docking stations, it remains functional and can be used as a tabletop or a wall-installed touch panel. The Wall Mounting Adapter has been designed for fixed installation on the wall. It does not need any

special back box built in the wall. It is installed with three screws above the standard European electrical wall box or directly above the cable outlet. Here the touch panel is fixed by means of four fixtures. The whole system is therefore not built into the wall, as is the case in classical built-in touch panels. Another piece of provided accessories is the Tabletop Stand, which is to be mounted to the back panel with two screws. Then the touch panel can be used as a classical wired or wireless tabletop panel. If Power over Ethernet (PoE) is used, only one cable leads to the panel. For more details please see appropriate Product Cut Sheets.



airCUE-6X Tabletop Docking Station, CS0306



airCUE-6X Wall Docking Station, CS0307



airCUE-6X Tabletop Stand, CS0308



airCUE-6X Wall Mounting Adapter, CS0309

airCUE-8X Tabletop Docking Station

cuerium



SPECIFICATIONS

LED indicators

Blue indicates power on

Red indicates charging of battery pack

Power supply

24 VDC (+/- 20%), Power jack connector

Physical

Stainless steel – wood or stainless steel – plastic enclosure

Dimensions 263 x 171 x 116 mm / 10.4" x 6.7" x 4.6"

Weight 1.6 kg / 3.6 lb

Operating environment

Temperature 10° to 40° C

Humidity 10% to 90% non-condensing

ORDER INFORMATION

Product codes

CS0301-001 wooden enclosure, white birch

CS0301-002 wooden enclosure, oak

CS0301-003 wooden enclosure, mahogany

CS0301-004 plastic enclosure, stardust black

CS0301-005 plastic enclosure, abrasive white



Other wooden enclosures are available on request.

STANDARD BOX CONTENTS

Tabletop Docking Station

Warranty Conditions, CE Declaration, RoHS Declaration

Data Sheet

MAIN FEATURES

- Optional accessories for 8" airCUEs
- Tabletop usage
- Power on and charging indication
- Powered by standard power supply 24 VDC
- Stainless steel - wood / plastic enclosure

DESCRIPTION

The airCUE-8X Tabletop Docking Station is an optional accessory for 8" airCUEs. It combines wireless handheld usage and tabletop usage of this panel. Insert the wireless touch panel into the tabletop docking station and charge battery. At the same time the docking station creates the right viewing angle for tabletop usage of the touch panel. Power to the docking station is provided by standard power supply delivered with touch panel.

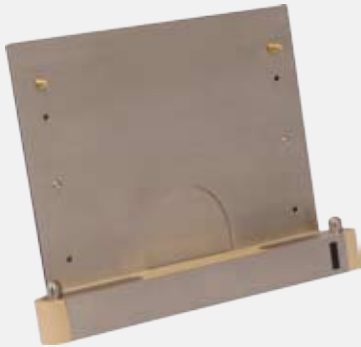
APPLICATIONS

- Commercial single-room applications
- Meeting rooms, conference rooms, boardrooms
- Commercial huge multi-room and multi-floor distributed systems
- Complete residential home automation
- High-tech homes
- High-end home theaters



airCUE-8X Wall Docking Station

cuerium



SPECIFICATIONS

LED indicators

Blue indicates power on

Red indicates charging of battery pack

Power supply

24 VDC (+/- 20%), 2-pin 3.5 mm connector

Physical

Stainless steel – wood or stainless steel – plastic enclosure

Dimensions 263 x 203 x 37 mm / 10.4" x 8.0" x 1.5"

Weight 1.9 kg / 4.2 lb

Operating environment

Temperature 10° to 40° C

Humidity 10% to 90% non-condensing

ORDER INFORMATION

Product codes

CS0302-001 wooden enclosure, white birch

CS0302-002 wooden enclosure, oak

CS0302-003 wooden enclosure, mahogany

CS0302-004 plastic enclosure, stardust black

CS0302-005 plastic enclosure, abrasive white



Other wooden enclosures are available on request.

STANDARD BOX CONTENTS

Wall Docking Station

Warranty Conditions, CE Declaration, RoHS Declaration

Data Sheet

MAIN FEATURES

- Optional accessories for 8" airCUEs
- Wall mounting usage
- Compatible with standard electrical wall boxes
- No special built-in back box required
- Power on and charging indication
- Powered by standard power supply 24 VDC
- Stainless steel - wood / plastic enclosure

DESCRIPTION

The airCUE-8X Wall Docking Station is an optional accessories for 8" airCUEs. It combines wireless handheld usage and wall usage of this panel. Put the wireless touch panel into the wall docking station and charge battery. At the same time the touch panel can be used as wall installed device. Power to the docking station is provided by standard power supply delivered with touch panel. The wall docking station is compatible with standard electrical wall boxes and it doesn't require installation of a special back box into the wall.

APPLICATIONS

- Commercial single-room applications
- Meeting rooms, conference rooms, boardrooms
- Commercial huge multi-room and multi-floor distributed systems
- Complete residential home automation
- High-tech homes
- High-end home theaters



airCUE-8X Tabletop Stand

cuerium



SPECIFICATIONS

Physical

Stainless steel enclosure

Dimensions 234 x 64 x 98 mm / 9.2" x 2.5" x 3.9"

Weight 0.7 kg / 1.6 lb

Operating environment

Temperature 10° to 40° C

Humidity 10% to 90% non-condensing

ORDER INFORMATION

Product code CS0303-001

STANDARD BOX CONTENTS

Tabletop Stand

Warranty Conditions, CE Declaration, RoHS Declaration

Data Sheet

MAIN FEATURES

- Optional accessories for 8" airCUEs
- Tabletop usage
- Allows use 8" airCUE as tabletop device
- Stainless steel enclosure

DESCRIPTION

The airCUE-8X Tabletop Stand is an optional accessories for 8" airCUEs. Simply attach tabletop stand to the rear panel and use 8" airCUE as tabletop device. Tabletop stand creates the right viewing angle for tabletop usage. The touch panel can be used as wired device connected to Ethernet and power supply or it can be used as wireless panel.

APPLICATIONS

- Commercial single-room applications
- Meeting rooms, conference rooms, boardrooms
- Commercial huge multi-room and multi-floor distributed systems
- Complete residential home automation
- High-tech homes
- High-end home theaters



airCUE-8X Wall Mounting Adapter

cuerium



MAIN FEATURES

- Optional accessories for 8" airCUEs
- Allows use 8" airCUE as non-detachable on wall device
- Wall mounting usage
- Compatible with standard electrical wall boxes
- No special built-in back box required
- Stainless steel enclosure

SPECIFICATIONS

Physical

Stainless steel enclosure

Dimensions 140 x 175 x 8 mm / 5.5" x 6.9" x 0.3"

Weight 0.7 kg / 1.6 lb

Operating environment

Temperature 10° to 40° C

Humidity 10% to 90% non-condensing

ORDER INFORMATION

Product code CS0304-001

STANDARD BOX CONTENTS

Wall Mounting Adapter

Warranty Conditions, CE Declaration, RoHS Declaration

Data Sheet

DESCRIPTION

The airCUE-8X Wall Mounting Adapter is an optional accessories for 8" airCUEs. Simply fix this adapter onto the wall and use 8" airCUE as non-detachable wall mounting device. The wall mounting adapter is compatible with standard electrical wall boxes and it doesn't require installation of a special back box into the wall. Touch panel can be used as wired device connected to Ethernet and power supply or it can be used as wireless panel.

APPLICATIONS

- Commercial single-room applications
- Meeting rooms, conference rooms, boardrooms
- Commercial huge multi-room and multi-floor distributed systems
- Complete residential home automation
- High-tech homes
- High-end home theaters

airCUE-6X Tabletop Docking Station

cuerium



SPECIFICATIONS

LED indicators

Blue indicates power on

Red indicates charging of battery pack

Power supply

24 VDC (+/- 20%), power jack connector

Physical

Stainless steel – wood or stainless steel – plastic enclosure

Dimensions 216 x 147 x 108 mm / 8.5" x 5.8" x 4.3"

Weight 1.1 kg / 2.4 lb

Operating environment

Temperature 10° to 40° C

Humidity 10% to 90% non-condensing

ORDER INFORMATION

Product codes

CS0306-001 wooden enclosure, white birch

CS0306-002 wooden enclosure, oak

CS0306-003 wooden enclosure, mahogany

CS0306-004 plastic enclosure, stardust black

CS0306-005 plastic enclosure, abrasive white



Other wooden enclosures are available on request.

STANDARD BOX CONTENTS

Tabletop Docking Station

Warranty Conditions, CE Declaration, RoHS Declaration

Data Sheet

MAIN FEATURES

- Optional accessories for 6" airCUEs
- Tabletop usage
- Power on and charging indication
- Powered by standard power supply 24 VDC
- Stainless steel - wood / plastic enclosure

DESCRIPTION

The airCUE-6X Tabletop Docking Station is an optional accessory for 6" airCUEs. It combines wireless handheld usage and tabletop usage of this panel. Insert the wireless touch panel into the tabletop docking station and charge battery. At the same time the docking station creates the right viewing angle for tabletop usage of the touch panel. Power to the docking station is provided by standard power supply delivered with touch panel.

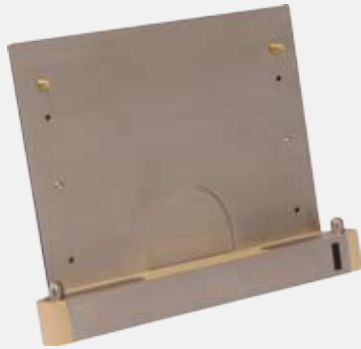
APPLICATIONS

- Commercial single-room applications
- Meeting rooms, conference rooms, boardrooms
- Commercial huge multi-room and multi-floor distributed systems
- Complete residential home automation
- High-tech homes
- High-end home theaters



airCUE-6X Wall Docking Station

cuerium



SPECIFICATIONS

LED indicators

- Blue indicates power on
- Red indicates charging of battery pack

Power supply

24 VDC (+/- 20%), 2-pin 3.5 mm connector

Physical

Stainless steel – wood or stainless steel – plastic enclosure
Dimensions 216 x 173 x 37 mm / 8.5" x 6.8" x 1.5"
Weight 1.4 kg / 3.1 lb

Operating environment

Temperature 10° to 40° C
Humidity 10% to 90% non-condensing

ORDER INFORMATION

Product codes

- CS0307-001 wooden enclosure, white birch
- CS0307-002 wooden enclosure, oak
- CS0307-003 wooden enclosure, mahogany
- CS0307-004 plastic enclosure, stardust black
- CS0307-005 plastic enclosure, abrasive white



Other wooden enclosures are available on request.

STANDARD BOX CONTENTS

Wall Docking Station
Warranty Conditions, CE Declaration, RoHS Declaration
Data Sheet

MAIN FEATURES

- Optional accessories for 6" airCUEs
- Wall mounting usage
- Compatible with standard electrical wall boxes
- No special built-in back box required
- Power on and charging indication
- Powered by standard power supply 24 VDC
- Stainless steel - wood / plastic enclosure

DESCRIPTION

The airCUE-6X Wall Docking Station is an optional accessories for 6" airCUEs. It combines wireless handheld usage and wall usage of this panel. Put the wireless touch panel into the wall docking station and charge battery. At the same time the touch panel can be used as wall installed device. Power to the docking station is provided by standard power supply delivered with touch panel. The wall docking station is compatible with standard electrical wall boxes and it doesn't require installation of a special back box into the wall.

APPLICATIONS

- Commercial single-room applications
- Meeting rooms, conference rooms, boardrooms
- Commercial huge multi-room and multi-floor distributed systems
- Complete residential home automation
- High-tech homes
- High-end home theaters



airCUE-6X Tabletop Stand

cuerium



SPECIFICATIONS

Physical

Stainless steel enclosure

Dimensions 187 x 64 x 85 mm / 7.4" x 2.5" x 3.3"

Weight 0.5 kg / 1.1 lb

Operating environment

Temperature 10° to 40° C

Humidity 10% to 90% non-condensing

ORDER INFORMATION

Product code CS0308-001

STANDARD BOX CONTENTS

Tabletop Stand

Warranty Conditions, CE Declaration, RoHS Declaration

Data Sheet

MAIN FEATURES

- Optional accessories for 6" airCUEs
- Tabletop usage
- Allows use 6" airCUE as tabletop device
- Stainless steel enclosure

DESCRIPTION

The airCUE-6X Tabletop Stand is an optional accessories for 6" airCUEs. Simply attach tabletop stand to the rear panel and use 6" airCUE as tabletop device. Tabletop stand creates the right viewing angle for tabletop usage. The touch panel can be used as wired device connected to Ethernet and power supply or it can be used as wireless panel.

APPLICATIONS

- Commercial single-room applications
- Meeting rooms, conference rooms, boardrooms
- Commercial huge multi-room and multi-floor distributed systems
- Complete residential home automation
- High-tech homes
- High-end home theaters



airCUE-6X Wall Mounting Adapter

cuerium



MAIN FEATURES

- Optional accessories for 6" airCUEs
- Allows use 6" airCUE as non-detachable on wall device
- Wall mounting usage
- Compatible with standard electrical wall boxes
- No special built-in back box required
- Stainless steel enclosure

SPECIFICATIONS

Physical

Stainless steel enclosure

Dimensions 140 x 145 x 8 mm / 5.5" x 5.7" x 0.3"

Weight 0.5 kg / 1.1 lb

Operating environment

Temperature 10° to 40° C

Humidity 10% to 90% non-condensing

ORDER INFORMATION

Product code CS0309-001

STANDARD BOX CONTENTS

Wall Mounting Adapter

Warranty Conditions, CE Declaration, RoHS Declaration

Data Sheet

DESCRIPTION

The airCUE-6X Wall Mounting Adapter is optional accessories for 6" airCUEs. Simply fix this adapter onto the wall and use 6" airCUE as non-detachable wall mounting device. The wall mounting adapter is compatible with standard electrical wall boxes and it doesn't require installation of a special back box into the wall. Touch panel can be used as wired device connected to Ethernet and power supply or it can be used as wireless panel.

APPLICATIONS

- Commercial single-room applications
- Meeting rooms, conference rooms, boardrooms
- Commercial huge multi-room and multi-floor distributed systems
- Complete residential home automation
- High-tech homes
- High-end home theaters

Tabletop Touch Panels

cue



SPECIFICATIONS

Touch-screen display

Active matrix color LCD
Size 8.4" / 213 mm diagonal, aspect ratio 4:3
Resolution 800 x 600 pixels, 65 536 colors (High Color)
Resistive membrane touch overlay

Built-in sensors

Light sensor for automatic backlight dimming
Motion sensor for automatic backlight switch on

Buttons

Power, Reset / Set factory default, 4x programmable

LED indicators

Power
Blue indicates power on
Green indicates external power supply

Memory

128 MB RAM
microSD Card min. 1 GB (upgradeable)

Software technologies

Admin Web, MPEG-4 video player

Video

MPEG-4 streaming video preview

Audio

Built-in microphone
Built-in mono speaker

System communication

10/100 BaseT LAN, RJ-45 connector

Power supply

Power over Ethernet (PoE), IEEE 802.3af compatible

Physical

Stainless steel – solid wood or plastic enclosure
Dimensions 263 x 175 x 25 mm / 10.4" x 6.9" x 1.0"
Weight 1.5 kg / 3.3 lb

Operating environment

Temperature 10° to 40° C
Humidity 10% to 90% non-condensing

MAIN FEATURES

- 8.4" active matrix touch screen display 800 x 600 pixels
- Wired Ethernet connection
- MPEG-4 streaming video preview
- Power over Ethernet (PoE) IEEE 802.3af compatible
- Four programmable buttons
- Web server and Admin Web pages for setup and diagnostics
- Built-in microphone and speaker
- Built-in light and motion sensors
- Wired tabletop and wired wall mounting usage

DESCRIPTION

The touchCUE-8X22 is superior touch panel caters to the full integration of lifestyle as well as work style. It combines functionality such as multimedia integration, lighting automation, security monitoring, entertainment integration, and meeting & presentation control. The 8.4" active matrix touch screen display offers resolution 800 x 600 pixels and it produces stunning high color images. The airCUE-8X22 allows to view cameras and other video sources using MPEG-4. Wired Ethernet connection provides easy network integration. The touch panel is equipped with Power over Ethernet (PoE) - technology enabling an Ethernet network cable to deliver both data and power. Fully compatible with CUE controllers, this touch panel provides the ultimate one-touch solution for meeting rooms, conference rooms, boardrooms and high-tech homes. Flexible tabletop or wall installation can be done using four types of accessories.

APPLICATIONS

- Security and video surveillance systems
- Commercial huge multi-room and multi-floor distributed systems
- Complete residential home automation
- High-tech homes
- High-end home theaters
- Commercial single-room applications
- Meeting rooms, conference rooms, boardrooms

STANDARD BOX CONTENTS

Touch panel
Stylus
Ethernet cable straight-through
Ethernet cable crossed-over
PoE Adapter incl. power cable
Cleaning tissue
Warranty Conditions, CE Declaration, RoHS Declaration
Touch Panel Data Sheet
Cue System Connector Wiring Sheet
CUE Application CD

ORDER INFORMATION

Product codes

CS0329-001 wooden enclosure, white birch
CS0329-002 wooden enclosure, oak
CS0329-003 wooden enclosure, mahogany
CS0329-004 plastic enclosure, stardust black
CS0329-005 plastic enclosure, abrasive white



Other wooden enclosures are available on request.

POWER OVER ETHERNET



Standard delivery of touch panel includes PoE Adapter. This adapter provides a full 15.4 watts of power per port with no additional power management required. Output is equipped with short circuit protection and overload protection as per 802.3af specification. The output can be shorted permanently without damage. Upon power-up the self-test for the internal microprocessor software is started. After the end self-test the DC output voltage is available for powering a compliant load (to the 802.3af PoE standards). Once a load is attached to the output RJ-45 connector the detection sequence is started. Should the load be non-compliant then the LEDs will blink a code signifying the cause for non-detection. Until the correct load is applied, the LEDs will continue to blink.

New technology is implemented to this touch panel. Power over Ethernet (PoE), sometimes also called Active Ethernet, provides a way for your network devices to be powered by their data cables rather than by separate power cords. In many applications, particularly in the installation of touchpanels, keyboards, sensors, wireless access points or IP telephones, PoE can significantly reduce installation costs.

Power Over Ethernet (PoE) integrates power and data onto one single cabling infrastructure, eliminating the need to have AC power adapters available at all locations. The IEEE 802.3af standard defines how products should provide and receive power over the data infrastructure. Using category 5/5e cable or better, PoE will provide power to PoE compatible device, such as touch panels, IP telephones, wireless LAN access points and IP cameras, for a distance up to 100 Meters. Products that are powered by PoE are generically called powered Devices (PD). PoE is already widely adopted in the market, saving up to 50% of overall installation costs by eliminating the need to install separate electrical wiring and power outlets in new or hard to reach places.

For more details please see appropriate Application Note at www.cuesystem.com.

ACCESSORIES FOR WALL INSTALLATION



The airCUE-8X Wall Mounting Adapter, CS0304 has been designed for fixed installation on the wall. It does not need any special back box built in the wall. It is installed with three screws above the standard European electrical wall box or directly above the cable outlet. Here the touch panel is fixed by means of four fixtures. The whole system is therefore not built into the wall, as is the case in classical built-in touch panels. If Power over Ethernet (PoE) is used, only one cable leads to the panel.

For more details please see appropriate Product Cut Sheet.



SPECIFICATIONS

Touch-screen display

Active matrix color LCD
Size 8.4" / 213 mm diagonal, aspect ratio 4:3
Resolution 800 x 600 pixels, 65 536 colors (High Color)
Resistive membrane touch overlay

Built-in sensors

Light sensor for automatic backlight dimming
Motion sensor for automatic backlight switch on

Buttons

Power, Reset / Set factory default, 4x programmable

LED indicators

Power
Blue indicates power on
Green indicates external power supply

Memory

64 MB RAM
CompactFlash Card min. 512 MB (upgradeable)

Software technologies

Admin Web

Audio

Built-in microphone
Built-in mono speaker

System communication

10/100 BaseT LAN, RJ-45 connector

Power supply

24 VDC (+/- 20%), 13 W, power jack connector
Power over Ethernet (PoE), IEEE 802.3af compatible

Physical

Stainless steel – solid wood or plastic enclosure
Dimensions 263 x 175 x 25 mm / 10.4" x 6.9" x 1.0"
Weight 1.5 kg / 3.3 lb

Operating environment

Temperature 10° to 40° C
Humidity 10% to 90% non-condensing

MAIN FEATURES

- Tabletop wired touch panel
- 8.4" active matrix touch screen display 800 x 600 pixels
- High Color graphics
- Wired Ethernet connection
- Power over Ethernet (PoE) IEEE 802.3af compatible
- Four programmable buttons
- Web server and Admin Web pages for setup and diagnostics
- On Screen Display for quick setup
- Built-in microphone and speaker
- Built-in light and motion sensors
- Stainless steel – plastic or stainless steel – solid wood enclosure
- Wall mounting adapter available

DESCRIPTION

The touchCUE-8X02 is wired tabletop touch panel caters to the full integration of lifestyle as well as work style. It combines functionality such as multimedia integration, lighting automation, security monitoring, entertainment integration, and meeting & presentation control. The 8.4" active matrix touch screen display offers resolution 800 x 600 pixels and it produces stunning high color images. Innovative design features like min. 512 MB of standard data storage provides a level of capability not available with other similar touch panels. Wired Ethernet connection provides easy network integration. The touch panel is equipped with Power over Ethernet (PoE) - technology enabling an Ethernet network cable to deliver both data and power. Standard delivery of touch panel includes PoE Adapter which provides a full 15.4 watts of power per port with no additional power management required. Fully compatible with CUE controllers, this touch panel provides the ultimate one-touch solution for meeting rooms, conference rooms, boardrooms and high-tech homes.

APPLICATIONS

- Commercial single-room applications
- Meeting rooms, conference rooms, boardrooms
- Commercial huge multi-room and multi-floor distributed systems
- Complete residential home automation
- High-tech homes
- High-end home theaters

STANDARD BOX CONTENTS

Touch panel
Stylus
Ethernet cable straight-through
Ethernet cable crossed-over
PoE Adapter incl. power cable
Cleaning tissue
Warranty Conditions, CE Declaration, RoHS Declaration
Touch Panel Data Sheet
Cue System Connector Wiring Sheet
CUE Application CD

ORDER INFORMATION

Product codes

CS0285-001 wooden enclosure, white birch
CS0285-002 wooden enclosure, oak
CS0285-003 wooden enclosure, mahogany
CS0285-004 plastic enclosure, stardust black
CS0285-005 plastic enclosure, abrasive white



Other wooden enclosures are available on request.

POWER OVER ETHERNET



Standard delivery of touch panel includes PoE Adapter. This adapter provides a full 15.4 watts of power per port with no additional power management required. Output is equipped with short circuit protection and overload protection as per 802.3af specification. The output can be shorted permanently without damage. Upon power-up the self-test for the internal microprocessor software is started. After the end self-test the DC output voltage is available for powering a compliant load (to the 802.3af PoE standards). Once a load is attached to the output RJ-45 connector the detection sequence is started. Should the load be non-compliant then the LEDs will blink a code signifying the cause for non-detection. Until the correct load is applied, the LEDs will continue to blink.

New technology is implemented to this touch panel. Power over Ethernet (PoE), sometimes also called Active Ethernet, provides a way for your network devices to be powered by their data cables rather than by separate power cords. In many applications, particularly in the installation of touchpanels, keyboards, sensors, wireless access points or IP telephones, PoE can significantly reduce installation costs.

Power Over Ethernet (PoE) integrates power and data onto one single cabling infrastructure, eliminating the need to have AC power adapters available at all locations. The IEEE 802.3af standard defines how products should provide and receive power over the data infrastructure. Using category 5/5e cable or better, PoE will provide power to PoE compatible device, such as touch panels, IP telephones, wireless LAN access points and IP cameras, for a distance up to 100 Meters. Products that are powered by PoE are generically called powered Devices (PD). PoE is already widely adopted in the market, saving up to 50% of overall installation costs by eliminating the need to install separate electrical wiring and power outlets in new or hard to reach places.

For more details please see appropriate Application Note at www.cuesystem.com.

ACCESSORIES FOR WALL INSTALLATION



The airCUE-8X Wall Mounting Adapter, CS0304 has been designed for fixed installation on the wall. It does not need any special back box built in the wall. It is installed with three screws above the standard European electrical wall box or directly above the cable outlet. Here the touch panel is fixed by means of four fixtures. The whole system is therefore not built into the wall, as is the case in classical built-in touch panels. If Power over Ethernet (PoE) is used, only one cable leads to the panel.

For more details please see appropriate Product Cut Sheet.



MAIN FEATURES

- 6.4" active matrix touch screen display 640 x 480 pixels
- Wired Ethernet connection
- MPEG-4 streaming video preview
- Power over Ethernet (PoE) IEEE 802.3af compatible
- Four programmable buttons
- Web server and Admin Web pages for setup and diagnostics
- Built-in microphone and speaker
- Built-in light and motion sensors
- Wired tabletop and wired wall mounting usage

SPECIFICATIONS

Touch-screen display

Active matrix color LCD
Size 6.4" / 162 mm diagonal, aspect ratio 4:3
Resolution 640 x 480 pixels, 65 536 colors (High Color)
Resistive membrane touch overlay

Built-in sensors

Light sensor for automatic backlight dimming
Motion sensor for automatic backlight switch on

Buttons

Power, Reset / Set factory default, 4x programmable

LED indicators

Power
Blue indicates power on
Green indicates external power supply

Memory

128 MB RAM
microSD Card min. 1 GB (upgradeable)

Software technologies

Admin Web, MPEG-4 video player

Video

MPEG-4 streaming video preview

Audio

Built-in microphone
Built-in mono speaker

System communication

10/100 BaseT LAN, RJ-45 connector

Power supply

Power over Ethernet (PoE), IEEE 802.3af compatible

Physical

Stainless steel – solid wood or plastic enclosure
Dimensions 216 x 145 x 25 mm / 8.5" x 5.7" x 1.0"
Weight 1.3 kg / 2.9 lb

Operating environment

Temperature 10° to 40° C
Humidity 10% to 90% non-condensing

DESCRIPTION

The touchCUE-6X22 is superior touch panel caters to the full integration of lifestyle as well as work style. It combines functionality such as multimedia integration, lighting automation, security monitoring, entertainment integration, and meeting & presentation control. The 6.4" active matrix touch screen display offers resolution 640 x 480 pixels and it produces stunning high color images. The airCUE-6X22 allows to view cameras and other video sources using MPEG-4. Wired Ethernet connection provides easy network integration. The touch panel is equipped with Power over Ethernet (PoE) - technology enabling an Ethernet network cable to deliver both data and power. Fully compatible with CUE controllers, this touch panel provides the ultimate one-touch solution for meeting rooms, conference rooms, boardrooms and high-tech homes. Flexible tabletop or wall installation can be done using four types of accessories.

APPLICATIONS

- Security and video surveillance systems
- Commercial huge multi-room and multi-floor distributed systems
- Complete residential home automation
- High-tech homes
- High-end home theaters
- Commercial single-room applications
- Meeting rooms, conference rooms, boardrooms

STANDARD BOX CONTENTS

Touch panel
Stylus
Ethernet cable straight-through
Ethernet cable crossed-over
PoE Adapter incl. power cable
Cleaning tissue
Warranty Conditions, CE Declaration, RoHS Declaration
Touch Panel Data Sheet
Cue System Connector Wiring Sheet
CUE Application CD

ORDER INFORMATION

Product codes

CS0330-001 wooden enclosure, white birch
CS0330-002 wooden enclosure, oak
CS0330-003 wooden enclosure, mahogany
CS0330-004 plastic enclosure, stardust black
CS0330-005 plastic enclosure, abrasive white



Other wooden enclosures are available on request.

POWER OVER ETHERNET



Standard delivery of touch panel includes PoE Adapter. This adapter provides a full 15.4 watts of power per port with no additional power management required. Output is equipped with short circuit protection and overload protection as per 802.3af specification. The output can be shorted permanently without damage. Upon power-up the self-test for the internal microprocessor software is started. After the end self-test the DC output voltage is available for powering a compliant load (to the 802.3af PoE standards). Once a load is attached to the output RJ-45 connector the detection sequence is started. Should the load be non-compliant then the LEDs will blink a code signifying the cause for non-detection. Until the correct load is applied, the LEDs will continue to blink.

New technology is implemented to this touch panel. Power over Ethernet (PoE), sometimes also called Active Ethernet, provides a way for your network devices to be powered by their data cables rather than by separate power cords. In many applications, particularly in the installation of touchpanels, keyboards, sensors, wireless access points or IP telephones, PoE can significantly reduce installation costs.

Power Over Ethernet (PoE) integrates power and data onto one single cabling infrastructure, eliminating the need to have AC power adapters available at all locations. The IEEE 802.3af standard defines how products should provide and receive power over the data infrastructure. Using category 5/5e cable or better, PoE will provide power to PoE compatible device, such as touch panels, IP telephones, wireless LAN access points and IP cameras, for a distance up to 100 Meters. Products that are powered by PoE are generically called powered Devices (PD). PoE is already widely adopted in the market, saving up to 50% of overall installation costs by eliminating the need to install separate electrical wiring and power outlets in new or hard to reach places.

For more details please see appropriate Application Note at www.cuesystem.com.

ACCESSORIES FOR WALL INSTALLATION



The airCUE-6X Wall Mounting Adapter, CS0309 has been designed for fixed installation on the wall. It does not need any special back box built in the wall. It is installed with three screws above the standard European electrical wall box or directly above the cable outlet. Here the touch panel is fixed by means of four fixtures. The whole system is therefore not built into the wall, as is the case in classical built-in touch panels. If Power over Ethernet (PoE) is used, only one cable leads to the panel.

For more details please see appropriate Product Cut Sheet.



SPECIFICATIONS

Touch-screen display

Active matrix color LCD
Size 6.4" / 162 mm diagonal, aspect ratio 4:3
Resolution 640 x 480 pixels, 65 536 colors (High Color)
Resistive membrane touch overlay

Built-in sensors

Light sensor for automatic backlight dimming
Motion sensor for automatic backlight switch on

Buttons

Power, Reset / Set factory default, 4x programmable

LED indicators

Power
Blue indicates power on
Green indicates external power supply

Memory

64 MB RAM
CompactFlash Card min. 512 MB (upgradeable)

Software technologies

Admin Web

Audio

Built-in microphone
Built-in mono speaker

System communication

10/100 BaseT LAN, RJ-45 connector

Power supply

24 VDC (+/- 20%), 11 W, power jack connector
Power over Ethernet (PoE), IEEE 802.3af compatible

Physical

Stainless steel – solid wood or plastic enclosure
Dimensions 216 x 145 x 25 mm / 8.5" x 5.7" x 1.0"
Weight 1.3 kg / 2.9 lb

Operating environment

Temperature 10° to 40° C
Humidity 10% to 90% non-condensing

MAIN FEATURES

- Tabletop wired touch panel
- 6.4" active matrix touch screen display 640 x 480 pixels
- High Color graphics
- Wired Ethernet connection
- Power over Ethernet (PoE) IEEE 802.3af compatible
- Four programmable buttons
- Web server and Admin Web pages for setup and diagnostics
- On Screen Display for quick setup
- Built-in microphone and speaker
- Built-in light and motion sensors
- Stainless steel – plastic or stainless steel – solid wood enclosure
- Wall mounting adapter available

DESCRIPTION

The touchCUE-6X02 is wired tabletop touch panel caters to the full integration of lifestyle as well as work style. It combines functionality such as multimedia integration, lighting automation, security monitoring, entertainment integration, and meeting & presentation control. The 6.4" active matrix touch screen display offers resolution 640 x 480 pixels and it produces stunning high color images. Innovative design features like min. 512 MB of standard data storage provides a level of capability not available with other similar touch panels. Wired Ethernet connection provides easy network integration. The touch panel is equipped with Power over Ethernet (PoE) - technology enabling an Ethernet network cable to deliver both data and power. Standard delivery of touch panel includes PoE Adapter which provides a full 15.4 watts of power per port with no additional power management required. Fully compatible with CUE controllers, this touch panel provides the ultimate one-touch solution for meeting rooms, conference rooms, boardrooms and high-tech homes.

APPLICATIONS

- Commercial single-room applications
- Meeting rooms, conference rooms, boardrooms
- Commercial huge multi-room and multi-floor distributed systems
- Complete residential home automation
- High-tech homes
- High-end home theaters

STANDARD BOX CONTENTS

Touch panel
Stylus
Ethernet cable straight-through
Ethernet cable crossed-over
PoE Adapter incl. power cable
Cleaning tissue
Warranty Conditions, CE Declaration, RoHS Declaration
Touch Panel Data Sheet
Cue System Connector Wiring Sheet
CUE Application CD

ORDER INFORMATION

Product codes

CS0286-001 wooden enclosure, white birch
CS0286-002 wooden enclosure, oak
CS0286-003 wooden enclosure, mahogany
CS0286-004 plastic enclosure, stardust black
CS0286-005 plastic enclosure, abrasive white



Other wooden enclosures are available on request.

POWER OVER ETHERNET



Standard delivery of touch panel includes PoE Adapter. This adapter provides a full 15.4 watts of power per port with no additional power management required. Output is equipped with short circuit protection and overload protection as per 802.3af specification. The output can be shorted permanently without damage. Upon power-up the self-test for the internal microprocessor software is started. After the end self-test the DC output voltage is available for powering a compliant load (to the 802.3af PoE standards). Once a load is attached to the output RJ-45 connector the detection sequence is started. Should the load be non-compliant then the LEDs will blink a code signifying the cause for non-detection. Until the correct load is applied, the LEDs will continue to blink.

New technology is implemented to this touch panel. Power over Ethernet (PoE), sometimes also called Active Ethernet, provides a way for your network devices to be powered by their data cables rather than by separate power cords. In many applications, particularly in the installation of touchpanels, keyboards, sensors, wireless access points or IP telephones, PoE can significantly reduce installation costs.

Power Over Ethernet (PoE) integrates power and data onto one single cabling infrastructure, eliminating the need to have AC power adapters available at all locations. The IEEE 802.3af standard defines how products should provide and receive power over the data infrastructure. Using category 5/5e cable or better, PoE will provide power to PoE compatible device, such as touch panels, IP telephones, wireless LAN access points and IP cameras, for a distance up to 100 Meters. Products that are powered by PoE are generically called powered Devices (PD). PoE is already widely adopted in the market, saving up to 50% of overall installation costs by eliminating the need to install separate electrical wiring and power outlets in new or hard to reach places.

For more details please see appropriate Application Note at www.cuesystem.com.

ACCESSORIES FOR WALL INSTALLATION



The airCUE-6X Wall Mounting Adapter, CS0309 has been designed for fixed installation on the wall. It does not need any special back box built in the wall. It is installed with three screws above the standard European electrical wall box or directly above the cable outlet. Here the touch panel is fixed by means of four fixtures. The whole system is therefore not built into the wall, as is the case in classical built-in touch panels. If Power over Ethernet (PoE) is used, only one cable leads to the panel.

For more details please see appropriate Product Cut Sheet.



SPECIFICATIONS

Touch-screen display

- Active matrix color LCD
- Size 15" / 381 mm diagonal
- Aspect ratio 4:3
- Resolution 1024 x 768 pixels
- 65 536 colors (High Color)
- Resistive membrane touch overlay
- Adjustable screen tilt 10° - 80°

Memory

- 128 MB RAM
- CompactFlash Card min. 512 MB (upgradeable)

Software technologies

- Admin Web

Video inputs

- 2x Composite video, RJ-45 connector
- 1x S-video, RJ-45 connector

Other connection

- RS-232, RJ-11 connector

System communication

- 10/100 BaseT Ethernet, RJ-45 connector
- CUEwire, RJ-45 connector

Power supply

- 24 VDC (+/- 20%), 40 W, RJ-45 connector

Physical

- Stainless steel – solid wood enclosure
- Dimensions 362 x 287 x 335 mm / 14.3" x 11.3" x 13.2"
- Weight 8 kg / 17.6 lb

Operating environment

- Temperature 10° to 40° C
- Humidity 10% to 90% non-condensing

MAIN FEATURES

- 15" active matrix touch screen display 1024 x 768 pixels
- High Color graphics
- Web server and Admin Web pages for setup and diagnostics
- Wired Ethernet connection
- Composite video and S-video inputs
- Wood and stainless steel enclosure

DESCRIPTION




When your prestige is on the line, there simply isn't a more attractive tilt multimedia touch panel than the beautiful, elegant and powerful wooden model. Featuring an avant-garde wooden and stainless steel enclosure, this standalone active device provides a touch-sensitive active-matrix color LCD screen that produces stunning High Color images for both graphics and video. All models accept composite (NTSC/PAL) video and S-video (Y/C) inputs and the video can be displayed either full screen or in a video window. Innovative design features like min. 512 MB of standard data storage provides a level of capability not available with other touch panels. Fully compatible with CUE controllers, these models provide the ultimate one-touch multimedia solution for meeting rooms, conference rooms, boardrooms, and high-tech homes.

APPLICATIONS

- Meeting rooms
- Conference rooms
- Boardrooms
- High-tech homes

ORDER INFORMATION

Product codes

CS0261-W-V	white birch enclosure	
CS0261-O-V	oak enclosure	
CS0261-M-V	mahogany enclosure	

Other wooden enclosures are available on request.

STANDARD BOX CONTENTS

Touch panel
 Ethernet cable straight-through, Ethernet cable crossed-over
 CUEwire cable
 CUEadapter /65W incl. power cable
 Cleaning tissue
 Warranty Conditions, CE Declaration, RoHS Declaration
 Touch Panel Data Sheet, Cue System Connector Wiring Sheet
 CUE Application CD



SPECIFICATIONS

Touch-screen display

- Active matrix color LCD
- Size 12.1" / 307 mm diagonal
- Aspect ratio 4:3
- Resolution 800 x 600 pixels
- 65 536 colors (High Color)
- Resistive membrane touch overlay
- Adjustable screen tilt 10° - 80°

Memory

- 128 MB RAM
- CompactFlash Card min. 512 MB (upgradeable)

Software technologies

- Admin Web

Video inputs

- 2x Composite video, RJ-45 connector
- 1x S-video, RJ-45 connector

Other connection

- RS-232, RJ-11 connector

System communication

- 10/100 BaseT Ethernet, RJ-45 connector
- CUEwire, RJ-45 connector

Power supply

- 24 VDC (+/- 20%), 25 W, RJ-45 connector

Physical

- Stainless steel – solid wood enclosure
- Dimensions 318 x 306 x 252 mm / 12.5" x 12" x 9.9"
- Weight 5.5 kg / 12.1 lb

Operating environment

- Temperature 10° to 40° C
- Humidity 10% to 90% non-condensing

MAIN FEATURES

- 12.1" active matrix touch screen display 800 x 600 pixels
- High Color graphics
- Web server and Admin Web pages for setup and diagnostics
- Wired Ethernet connection
- Composite video and S-video inputs
- Wood and stainless steel enclosure

DESCRIPTION




When your prestige is on the line, there simply isn't a more attractive tilt multimedia touch panel than the beautiful, elegant and powerful wooden model. Featuring an avant-garde wooden and stainless steel enclosure, this standalone active device provides a touch-sensitive active-matrix color LCD screen that produces stunning High Color images for both graphics and video. All models accept composite (NTSC/PAL) video and S-video (Y/C) inputs and the video can be displayed either full screen or in a video window. Innovative design features like min. 512 MB of standard data storage provides a level of capability not available with other touch panels. Fully compatible with CUE controllers, these models provide the ultimate one-touch multimedia solution for meeting rooms, conference rooms, boardrooms, and high-tech homes.

APPLICATIONS

- Meeting rooms
- Conference rooms
- Boardrooms
- High-tech homes

ORDER INFORMATION

Product codes

CS0234-W-V	white birch enclosure	
CS0234-O-V	oak enclosure	
CS0234-M-V	mahogany enclosure	

Other wooden enclosures are available on request.

STANDARD BOX CONTENTS

Touch panel
 Ethernet cable straight-through, Ethernet cable crossed-over
 CUEwire cable
 CUEadapter /30W incl. power cable
 Cleaning tissue
 Warranty Conditions, CE Declaration, RoHS Declaration
 Touch Panel Data Sheet, Cue System Connector Wiring Sheet
 CUE Application CD



SPECIFICATIONS

Touch-screen display

- Active matrix color LCD
- Size 12.1" / 307 mm diagonal
- Aspect ratio 4:3
- Resolution 800 x 600 pixels
- 65 536 colors (High Color)
- Resistive membrane touch overlay
- Adjustable screen tilt 0° - 80°

Memory

- 128 MB RAM
- CompactFlash Card min. 512 MB (upgradeable)

Software technologies

- Admin Web

Video inputs

- 2x Composite video, RJ-45 connector
- 1x S-video, RJ-45 connector

Other connection

- RS-232, RJ-11 connector

System communication

- 10/100 BaseT Ethernet, RJ-45 connector
- CUEwire, RJ-45 connector

Power supply

- 24 VDC (+/- 20%), 25 W, RJ-45 connector

Physical

- Stainless steel – plastic enclosure
- Dimensions 294 x 295 x 289 mm / 11.6" x 11.6" x 11.4"
- Weight 4.8 kg / 10.6 lb

Operating environment

- Temperature 10° to 40° C
- Humidity 10% to 90% non-condensing

MAIN FEATURES

- 12.1" active matrix touch screen display 800 x 600 pixels
- High Color graphics
- Web server and Admin Web pages for setup and diagnostics
- Wired Ethernet connection
- Composite video and S-video inputs
- Black plastic and stainless steel enclosure

DESCRIPTION

This tabletop touch panel is beautiful, elegant and powerful tilt multimedia device. Featuring an avant-garde stainless steel enclosure, this standalone active device provides a touch-sensitive active-matrix color LCD screen that produces stunning High Color graphics. This video model accepts composite (NTSC/PAL) video and S-video (Y/C) inputs and the video can be displayed either full screen or in a video window. Innovative design features like the easy-to-adjust tilting mechanism and the ability to upgrade the standard min. 512 MB CompactFlash memory card with in minutes, provides a level of capability not available with other touch panels. Fully compatible with CUE controllers, these models provides a one-touch solution ideal for boardroom, conference rooms, training rooms and residential installations.

APPLICATIONS

- Meeting rooms
- Conference rooms
- Boardrooms
- High-tech homes

ORDER INFORMATION

Product code CS0236-V

STANDARD BOX CONTENTS

Touch panel
Ethernet cable straight-through, Ethernet cable crossed-over
CUEwire cable
CUEadapter /30W incl. power cable
Cleaning tissue
Warranty Conditions, CE Declaration, RoHS Declaration
Touch Panel Data Sheet, Cue System Connector Wiring Sheet
CUE Application CD



SPECIFICATIONS

Touch-screen display

- Active matrix color LCD
- Size 12.1" / 307 mm diagonal
- Aspect ratio 4:3
- Resolution 800 x 600 pixels
- 65 536 colors (High Color)
- Resistive membrane touch overlay
- Adjustable screen tilt 0° - 80°

Memory

- 64 MB RAM
- CompactFlash Card min. 512 MB (upgradeable)

Software technologies

- Admin Web

Other connection

- RS-232, RJ-11 connector

System communication

- 10/100 BaseT Ethernet, RJ-45 connector
- CUEwire, RJ-45 connector

Power supply

- 24 VDC (+/- 20%), 25 W, RJ-45 connector

Physical

- Stainless steel – plastic enclosure
- Dimensions 294 x 295 x 289 mm / 11.6" x 11.6" x 11.4"
- Weight 4.8 kg / 10.6 lb

Operating environment

- Temperature 10° to 40° C
- Humidity 10% to 90% non-condensing

MAIN FEATURES

- 12.1" active matrix touch screen display 800 x 600 pixels
- High Color graphics
- Web server and Admin Web pages for setup and diagnostics
- Wired Ethernet connection
- Black plastic and stainless steel enclosure

DESCRIPTION

This tabletop touch panel is beautiful, elegant and powerful tilt multimedia device. Featuring an avant-garde stainless steel enclosure, this standalone active device provides a touch-sensitive active-matrix color LCD screen that produces stunning high color graphics. Innovative design features like the easy-to-adjust tilting mechanism and the ability to upgrade the standard min. 512 MB CompactFlash memory card with in minutes, provides a level of capability not available with other touch panels. Fully compatible with CUE controllers, these models provides a one-touch solution ideal for boardroom, conference rooms, training rooms and residential installations.

APPLICATIONS

- Meeting rooms
- Conference rooms
- Boardrooms
- High-tech homes

ORDER INFORMATION

Product code CS0236

STANDARD BOX CONTENTS

Touch panel
Ethernet cable straight-through, Ethernet cable crossed-over
CUEwire cable
CUEadapter /30W incl. power cable
Cleaning tissue
Warranty Conditions, CE Declaration, RoHS Declaration
Touch Panel Data Sheet, Cue System Connector Wiring Sheet
CUE Application CD



SPECIFICATIONS

Touch-screen display

- Active matrix color LCD
- Size 10.4" / 264 mm diagonal
- Aspect ratio 4:3
- Resolution 640 x 480 pixels
- 65 536 colors (High Color)
- Resistive membrane touch overlay
- Adjustable screen tilt 0° - 80°

Memory

- 64 MB RAM
- CompactFlash Card min. 512 MB (upgradeable)

Software technologies

- Admin Web

Other connection

- RS-232, RJ-11 connector

System communication

- 10/100 BaseT Ethernet, RJ-45 connector
- CUEwire, RJ-45 connector

Power supply

- 24 VDC (+/- 20%), 25 W, RJ-45 connector

Physical

- Stainless steel – plastic enclosure
- Dimensions 275 x 260 x 220 mm / 10.8" x 10.2" x 8.7"
- Weight 4.0 kg / 8.8 lb

Operating environment

- Temperature 10° to 40° C
- Humidity 10% to 90% non-condensing

MAIN FEATURES

- 10.4" active matrix touch screen display 640 x 480 pixels
- High Color graphics
- Web server and Admin Web pages for setup and diagnostics
- Wired Ethernet connection
- Black plastic and stainless steel enclosure

DESCRIPTION

This tabletop touch panel is beautiful, elegant and powerful tilt multimedia device. Featuring an avant-garde stainless steel enclosure, this standalone active device provides a touch-sensitive active-matrix color LCD screen that produces stunning high color graphics. Innovative design features like the easy-to-adjust tilting mechanism and the ability to upgrade the standard min. 512 MB CompactFlash memory card with in minutes, provides a level of capability not available with other touch panels. Fully compatible with CUE controllers, these models provides a one-touch solution ideal for boardroom, conference rooms, training rooms and residential installations.

APPLICATIONS

- Meeting rooms
- Conference rooms
- Boardrooms
- High-tech homes

ORDER INFORMATION

Product code CS0237

STANDARD BOX CONTENTS

Touch panel
Ethernet cable straight-through, Ethernet cable crossed-over
CUEwire cable
CUEadapter /30W incl. power cable
Cleaning tissue
Warranty Conditions, CE Declaration, RoHS Declaration
Touch Panel Data Sheet, Cue System Connector Wiring Sheet
CUE Application CD

Built-In Touch Panels

cue



MAIN FEATURES

- 3.5" active matrix LCD touch screen display
- Display resolution 320 x 240 pixels, High Color graphics
- Display LED backlight
- Four programmable buttons
- Built-in light sensor
- Standard data storage min. 512 MB
- Web server and Admin Web pages for setup and diagnostics
- Wired Ethernet connection
- Power over Ethernet (PoE) IEEE 802.3af compatible
- Ultra low power consumption
- Stainless steel - plastic / wood enclosure
- On-wall installation
- Compatible with standard European wall box

SPECIFICATIONS

Touch-screen display

Active matrix color ultra-bright LCD
LED backlight
Size 3.5" / 89 mm diagonal
Aspect ratio 4:3
Resolution 320 x 240 pixels
65 536 colors (High Color)
Resistive membrane touch overlay

Built-in sensor

Light sensor for automatic backlight dimming

Buttons

Reset / Set factory default
4x programmable

Memory

64 MB RAM
CompactFlash Card min. 512 MB (upgradeable)

Software technologies

Admin Web

System communication

10/100 BaseT LAN, RJ-45 connector

Power supply

Power over Ethernet (PoE), IEEE 802.3af compatible

Physical

Stainless steel - plastic or wood enclosure
Dimensions 148 x 90 x 24 mm / 5.8" x 3.5" x 0.9"
Weight 0.5 kg / 1.1 lb

Operating environment

Temperature 10° to 40° C
Humidity 10% to 90% non-condensing

DESCRIPTION

The touchCUE-4X02 is compact wired touch panel designed for easy installation on a wall, lectern or similar flat surface. Featuring a beautiful stainless steel - wood or stainless steel - plastic architectural finish, this touch panel is an elegant and powerful wall mounted panel designed to be installed onto a standard European electrical wall box. It brings high performance at a low cost. The 3.5" active matrix touch screen display equipped with LED backlight offers resolution 320 x 240 pixels and it produces stunning high color images. Innovative design features like min. 512 MB of standard data storage. Four programmable buttons are positioned below the display and button function can be dynamically changed on the screen. Built-in light sensor allows automatic display backlight dimming. Wired Ethernet connection providing easy network integration is standard for this model. The touch panel is equipped with Power over Ethernet (PoE) - technology enabling an Ethernet network cable to deliver both data and power. Fully compatible with CUE controllers, this touch panel provides the ultimate one-touch solution for meeting rooms, conference rooms, boardrooms and high-tech homes.

APPLICATIONS

- Commercial single-room applications
- Meeting rooms, conference rooms, boardrooms
- Commercial huge multi-room and multi-floor distributed systems
- Complete residential home automation
- High-tech homes

STANDARD BOX CONTENTS

Touch panel
Ethernet cable straight-through
Ethernet cable crossed-over
PoE injector incl. power cable
Cleaning tissue
Warranty Conditions, CE Declaration, RoHS Declaration
Touch Panel Data Sheet
Cue System Connector Wiring Sheet
CUE Application CD

ORDER INFORMATION

Product codes

CS0326-001	wooden enclosure, white birch
CS0326-002	wooden enclosure, oak
CS0326-003	wooden enclosure, mahogany
CS0326-004	plastic enclosure, stardust black
CS0326-005	plastic enclosure, abrasive white



Other wooden enclosures are available on request.

POWER OVER ETHERNET



Standard delivery of touch panel includes PoE Adapter. This adapter provides a full 15.4 watts of power per port with no additional power management required. Output is equipped with short circuit protection and overload protection as per 802.3af specification. The output can be shorted permanently without damage. Upon power-up the self-test for the internal microprocessor software is started. After the end self-test the DC output voltage is available for powering a compliant load (to the 802.3af PoE standards). Once a load is attached to the output RJ-45 connector the detection sequence is started. Should the load be non-compliant then the LEDs will blink a code signifying the cause for non-detection. Until the correct load is applied, the LEDs will continue to blink.

New technology is implemented to this touch panel. Power over Ethernet (PoE), sometimes also called Active Ethernet, provides a way for your network devices to be powered by their data cables rather than by separate power cords. In many applications, particularly in the installation of touchpanels, keyboards, sensors, wireless access points or IP telephones, PoE can significantly reduce installation costs.

Power Over Ethernet (PoE) integrates power and data onto one single cabling infrastructure, eliminating the need to have AC power adapters available at all locations. The IEEE 802.3af standard defines how products should provide and receive power over the data infrastructure. Using category 5/5e cable or better, PoE will provide power to PoE compatible device, such as touch panels, IP telephones, wireless LAN access points and IP cameras, for a distance up to 100 Meters. Products that are powered by PoE are generically called powered Devices (PD). PoE is already widely adopted in the market, saving up to 50% of overall installation costs by eliminating the need to install separate electrical wiring and power outlets in new or hard to reach places.

For more details please see appropriate Application Note at www.cuesystem.com.



SPECIFICATIONS

Touch-screen display

- Active matrix color LCD
- Size 12.1" / 307 mm diagonal
- Aspect ratio 4:3
- Resolution 800 x 600 pixels
- 65 536 colors (High Color)
- Resistive membrane touch overlay

Memory

- 128 MB RAM
- CompactFlash Card min. 512 MB (upgradeable)

Software technologies

- Admin Web

Video inputs

- 2x Composite video, RJ-45 connector
- 1x S-video, RJ-45 connector

Other connection

- RS-232, RJ-11 connector

System communication

- 10/100 BaseT Ethernet, RJ-45 connector
- CUEwire, RJ-45 connector

Power supply

- 24 VDC (+/- 20%), 25 W, RJ-45 connector

Physical

- Stainless steel enclosure
- Dimensions 289 x 222 x 88 mm / 11.4" x 8.7" x 3.5"
- Weight 4 kg / 8.8 lb

Operating environment

- Temperature 10° to 40° C
- Humidity 10% to 90% non-condensing

MAIN FEATURES

- 12" active matrix touch screen display 800 x 600 pixels
- High Color graphics
- Web server and Admin Web pages for setup and diagnostics
- Wired Ethernet connection
- Composite video and S-video inputs
- Stainless steel enclosure

DESCRIPTION

Beautiful and rugged, there simply isn't anything that compares with the lectern or wall mounted touch panels. The built-in touch panels incorporate features that only state-of-the-art products can offer. This standalone active device features a touch-sensitive active-matrix color LCD screen that produces stunning High Color images. The video model is accepting composite (NTSC/PAL) video and S-video (Y/C) inputs and the video can be displayed either full screen or in a video window. Innovative design features like min. 512 MB of standard data storage provides a level of capability not available with other touch panels. Fully compatible with CUE controllers, these models provide the ultimate one-touch solution for meeting rooms, conference rooms, boardrooms, and high-tech homes.

APPLICATIONS

- Commercial single-room applications
- Meeting rooms, conference rooms, boardrooms
- Commercial huge multi-room and multi-floor distributed systems
- Complete residential home automation
- High-tech homes

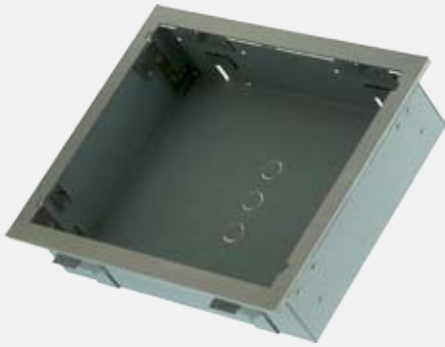
ORDER INFORMATION

Product code CS0238-V

STANDARD BOX CONTENTS

Touch panel
Ethernet cable straight-through, Ethernet cable crossed-over
CUEwire cable
CUEadapter /30W incl. power cable
Cleaning tissue
Warranty Conditions, CE Declaration, RoHS Declaration
Touch Panel Data Sheet, Cue System Connector Wiring Sheet
CUE Application CD

touchCUE-LV /b Back Box



DESCRIPTION

The back box is an optional accessories for built-in touch panel and it provides a steel enclosure. The back box is designed for pre-construction applications and allows install touch panel to all types of wall as well as to the table. Box construction allows enough airflow for touch panel when installed in an enclosed wall. All necessary accessories is supplied with back box.

SPECIFICATIONS

Physical

Stainless steel enclosure
Dimensions 323 x 282 x 83 mm / 12.7" x 11.1" x 3.3"
Weight 1.6 kg / 3.5 lb

ORDER INFORMATION

Product code CS0238-MB

touchCUE-LV /b Rack Mount Panel



DESCRIPTION

The rack mount panel is an optional accessories for built-in touch panel and it provides simple solution for installing built-in touch panel to the 19" rack. Appropriate back box must be used.

SPECIFICATIONS

Physical

Stainless steel enclosure
Dimensions Rack 19", 6 U
Weight 1.7 kg / 3.8 lb

ORDER INFORMATION

Product code CS0238-MR



SPECIFICATIONS

Touch-screen display

- Active matrix color LCD
- Size 12.1" / 307 mm diagonal
- Aspect ratio 4:3
- Resolution 800 x 600 pixels
- 65 536 colors (High Color)
- Resistive membrane touch overlay

Memory

- 64 MB RAM
- CompactFlash Card min. 512 MB (upgradeable)

Software technologies

- Admin Web

Other connection

- RS-232, RJ-11 connector

System communication

- 10/100 BaseT Ethernet, RJ-45 connector
- CUEwire, RJ-45 connector

Power supply

- 24 VDC (+/- 20%), 25 W, RJ-45 connector

Physical

- Stainless steel enclosure
- Dimensions 289 x 222 x 88 mm / 11.4" x 8.7" x 3.5"
- Weight 4 kg / 8.8 lb

Operating environment

- Temperature 10° to 40° C
- Humidity 10% to 90% non-condensing

MAIN FEATURES

- 12" active matrix touch screen display 800 x 600 pixels
- High Color graphics
- Web server and Admin Web pages for setup and diagnostics
- Wired Ethernet connection
- Stainless steel enclosure

DESCRIPTION

Beautiful and rugged, there simply isn't anything that compares with the lectern or wall mounted touch panels. The built-in touch panels incorporate features that only state-of-the-art products can offer. This standalone active device features a touch-sensitive active-matrix color LCD screen that produces stunning high color images. Innovative design features like min. 512 MB of standard data storage provides a level of capability not available with other touch panels. Fully compatible with CUE controllers, these models provide the ultimate one-touch solution for meeting rooms, conference rooms, boardrooms, and high-tech homes.

APPLICATIONS

- Commercial single-room applications
- Meeting rooms, conference rooms, boardrooms
- Commercial huge multi-room and multi-floor distributed systems
- Complete residential home automation
- High-tech homes

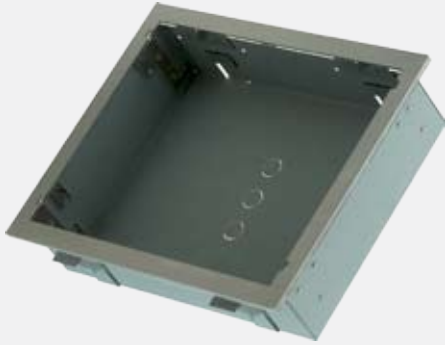
ORDER INFORMATION

Product code CS0238

STANDARD BOX CONTENTS

Touch panel
Ethernet cable straight-through, Ethernet cable crossed-over
CUEwire cable
CUEadapter /30W incl. power cable
Cleaning tissue
Warranty Conditions, CE Declaration, RoHS Declaration
Touch Panel Data Sheet, Cue System Connector Wiring Sheet
CUE Application CD

touchCUE-L /b Back Box



DESCRIPTION

The back box is an optional accessories for built-in touch panel and it provides a steel enclosure. The back box is designed for pre-construction applications and allows install touch panel to all types of wall as well as to the table. Box construction allows enough airflow for touch panel when installed in an enclosed wall. All necessary accessories is supplied with back box.

SPECIFICATIONS

Physical

Stainless steel enclosure
Dimensions 323 x 282 x 83 mm / 12.7" x 11.1" x 3.3"
Weight 1.6 kg / 3.5 lb

ORDER INFORMATION

Product code CS0238-MB

touchCUE-L /b Rack Mount Panel



DESCRIPTION

The rack mount panel is an optional accessories for built-in touch panel and it provides simple solution for installing built-in touch panel to the 19" rack. Appropriate back box must be used.

SPECIFICATIONS

Physical

Stainless steel enclosure
Dimensions Rack 19", 6 U
Weight 1.7 kg / 3.8 lb

ORDER INFORMATION

Product code CS0238-MR



SPECIFICATIONS

Touch-screen display

- Active matrix color LCD
- Size 10.4" / 264 mm diagonal
- Aspect ratio 4:3
- Resolution 640 x 480 pixels
- 65 536 colors (High Color)
- Resistive membrane touch overlay

Memory

- 64 MB RAM
- CompactFlash Card min. 512 MB (upgradeable)

Software technologies

- Admin Web

Other connection

- RS-232, RJ-11 connector

System communication

- 10/100 BaseT Ethernet, RJ-45 connector
- CUEwire, RJ-45 connector

Power supply

- 24 VDC (+/- 20%), 25 W, RJ-45 connector

Physical

- Stainless steel enclosure
- Dimensions 271 x 197 x 88 mm / 10.7" x 7.8" x 3.5"
- Weight 3 kg / 6.6 lb

Operating environment

- Temperature 10° to 40° C
- Humidity 10% to 90% non-condensing

MAIN FEATURES

- 10.4" active matrix touch screen display 640 x 480 pixels
- High Color graphics
- Web server and Admin Web pages for setup and diagnostics
- Wired Ethernet connection
- Stainless steel enclosure

DESCRIPTION

Beautiful and rugged, there simply isn't anything that compares with the lectern or wall mounted touch panels. The built-in touch panels incorporate features that only state-of-the-art products can offer. This standalone active screen device features a touch-sensitive active-matrix color LCD screen that produces stunning high color images. Innovative design features like min. 512 MB of standard data storage provides a level of capability not available with other touch panels. Fully compatible with CUE controllers, these models provide the ultimate one-touch solution for meeting rooms, conference rooms, boardrooms, and high-tech homes.

APPLICATIONS

- Commercial single-room applications
- Meeting rooms, conference rooms, boardrooms
- Commercial huge multi-room and multi-floor distributed systems
- Complete residential home automation
- High-tech homes

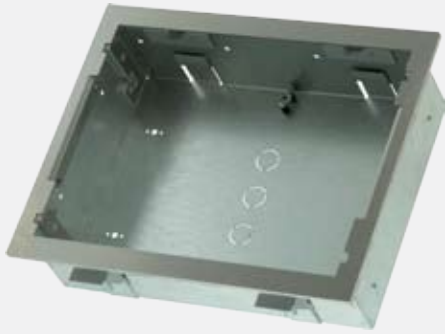
ORDER INFORMATION

Product code CS0239

STANDARD BOX CONTENTS

Touch panel
Ethernet cable straight-through, Ethernet cable crossed-over
CUEwire cable
CUEadapter /30W incl. power cable
Cleaning tissue
Warranty Conditions, CE Declaration, RoHS Declaration
Touch Panel Data Sheet, Cue System Connector Wiring Sheet
CUE Application CD

touchCUE-M /b Back Box



DESCRIPTION

The back box is an optional accessories for built-in touch panel and it provides a steel enclosure. The back box is designed for pre-construction applications and allows install touch panel to all types of wall as well as to the table. Box construction allows enough airflow for touch panel when installed in an enclosed wall. All necessary accessories is supplied with back box.

SPECIFICATIONS

Physical

Stainless steel enclosure
Dimensions 298 x 251 x 83 mm / 11.7" x 9.9" x 3.3"
Weight 1.5 kg / 3.3 lb

ORDER INFORMATION

Product code CS0239-MB

touchCUE-M /b Rack Mount Panel



DESCRIPTION

The rack mount panel is an optional accessories for built-in touch panel and it provides simple solution for installing built-in touch panel to the 19" rack. Appropriate back box must be used.

SPECIFICATIONS

Physical

Stainless steel enclosure
Dimensions Rack 19", 6 U
Weight 1.9 kg / 4.2 lb

ORDER INFORMATION

Product code CS0239-MR



SPECIFICATIONS

Touch-screen display

Active matrix color LCD
Size 5.7" / 145 mm diagonal
Aspect ratio 4:3
Resolution 320 x 240 pixels
65 536 colors (High Color)
Resistive membrane touch overlay

Memory

64 MB RAM
CompactFlash Card min. 512 MB (upgradeable)

Software technologies

Admin Web

Other connection

RS-232, RJ-11 connector

System communication

10/100 BaseT Ethernet, RJ-45 connector
CUEwire, RJ-45 connector

Power supply

24 VDC (+/- 20%), 15 W, RJ-45 connector

Physical

Stainless steel enclosure
Dimensions 208 x 139 x 78 mm / 8.2" x 5.5" x 3.1"
Weight 1.7 kg / 3.7 lb

Operating environment

Temperature 10° to 40° C
Humidity 10% to 90% non-condensing

MAIN FEATURES

- 5.7" active matrix touch screen display 320 x 240 pixels
- High Color graphics
- Web server and Admin Web pages for setup and diagnostics
- Wired Ethernet connection
- Stainless steel enclosure

DESCRIPTION

Beautiful and rugged, there simply isn't anything that compares with the lectern or wall mounted touch panels. The built-in touch panels incorporate features that only state-of-the-art products can offer. This standalone active screen device features a touch-sensitive active-matrix color LCD screen that produces stunning high color images. Innovative design features like min. 512 MB of standard data storage provides a level of capability not available with other touch panels. Fully compatible with CUE controllers, these models provide the ultimate one-touch solution for meeting rooms, conference rooms, boardrooms, and high-tech homes.

APPLICATIONS

- Commercial single-room applications
- Meeting rooms, conference rooms, boardrooms
- Commercial huge multi-room and multi-floor distributed systems
- Complete residential home automation
- High-tech homes

ORDER INFORMATION

Product code CS0241

STANDARD BOX CONTENTS

Touch panel
Ethernet cable straight-through, Ethernet cable crossed-over
CUEwire cable
CUEadapter /30W incl. power cable
Cleaning tissue
Warranty Conditions, CE Declaration, RoHS Declaration
Touch Panel Data Sheet, Cue System Connector Wiring Sheet
CUE Application CD

touchCUE-S /b Back Box



DESCRIPTION

The back box is an optional accessories for built-in touch panel and it provides a steel enclosure. The back box is designed for pre-construction applications and allows install touch panel to all types of wall as well as to the table. Box construction allows enough airflow for touch panel when installed in an enclosed wall. All necessary accessories is supplied with back box.

SPECIFICATIONS

Physical

Stainless steel enclosure
Dimensions 212 x 136 x 83 mm / 8.4" x 5.4" x 3.3"
Weight 0.6 kg / 1.3 lb

ORDER INFORMATION

Product code CS0241-MB

touchCUE-S /b Rack Mount Panel



DESCRIPTION

The rack mount panel is an optional accessories for built-in touch panel and it provides simple solution for installing built-in touch panel to the 19" rack. Appropriate back box must be used.

SPECIFICATIONS

Physical

Stainless steel enclosure
Dimensions Rack 19", 4 U
Weight 1.5 kg / 3.3 lb

ORDER INFORMATION

Product code CS0241-MR

touchCUE-SX /b



SPECIFICATIONS

Touch-screen display

Active matrix color ultra-bright LCD
LED backlight
Size 3.5" / 89 mm diagonal
Aspect ratio 4:3
Resolution 320 x 240 pixels
65 536 colors (High Color)
Resistive membrane touch overlay

Button

Reset / Set factory default

Memory

64 MB RAM
CompactFlash Card min. 512 MB (upgradeable)

Software technologies

Admin Web

System communication

10/100 BaseT Ethernet, RJ-45 connector
CUEwire, RJ-45 connector

Power supply

24 VDC (+/- 20%), 4 W, RJ-45 connector

Physical

Stainless steel enclosure
Dimensions 112 x 105 x 67 mm / 4.4" x 4.1" x 2.6"
Weight 0.8 kg / 1.8 lb

Operating environment

Temperature 10° to 40° C
Humidity 10% to 90% non-condensing

touchCUE-SX /b Back Box

DESCRIPTION

The back box is an optional accessories for built-in touch panel and it provides a plastic enclosure. The back box is designed for pre-construction applications.

ORDER INFORMATION

Product code CS0266-MB

MAIN FEATURES

- 3.5" active matrix LCD touch screen display
- Display resolution 320 x 240 pixels
- Display LED backlight
- High Color graphics
- Standard data storage min. 512 MB
- Web server and Admin Web pages for setup and diagnostics
- Wired Ethernet connection
- Ultra low power consumption
- Stainless steel front panel

DESCRIPTION

The touchCUE-SX /b is compact built-in touch panel designed for easy installation in a wall, lectern or similar flat surface. It brings high performance at a low cost. The 3.5" active matrix touch screen display equipped with LED backlight offers resolution 320 x 240 pixels and it produces stunning high color images. Innovative design features like min. 512 MB of standard data storage provides a level of capability not available with other similar touch panels. Wired Ethernet connection providing easy network integration is standard for this model. Fully compatible with CUE controllers, this touch panel provides the ultimate one-touch solution for meeting rooms, conference rooms, boardrooms and high-tech homes.

APPLICATIONS

- Commercial single-room applications
- Meeting rooms, conference rooms, boardrooms
- Commercial huge multi-room and multi-floor distributed systems
- Complete residential home automation
- High-tech homes

ORDER INFORMATION

Product code CS0266

STANDARD BOX CONTENTS

Touch panel
Ethernet cable straight-through, Ethernet cable crossed-over
CUEwire cable
CUEadapter /30W incl. power cable
Cleaning tissue
Warranty Conditions, CE Declaration, RoHS Declaration
Touch Panel Data Sheet, Cue System Connector Wiring Sheet
CUE Application CD

Wireless Button Panels

cue



SPECIFICATIONS

Buttons

- 8x transport function
- 7x menu navigation
- 3x volume control and mute
- 2x channel control
- 10x numeric with customized labels
- 1x Enter
- 1x Fn
- 1x system on/off

LED indicators

- Charging
- 4x color LEDs

System communication

- Infra-red, one-way

Power supply

- 24 VDC (+/-20%), max. 5 W while charging
- Built-in Li-Ion rechargeable battery pack

Physical

- Stainless steel – solid wood or plastic enclosure
- Dimensions 55 x 236 x 21 mm / 2.1" x 9.3" x 0.8"
- Weight 0.4 kg / 0.9 lb

Operating environment

- Temperature 10° to 40° C
- Humidity 10% to 90% non-condensing

MAIN FEATURES

- Dedicated buttons for most frequent functions
- Replaceable plastic part of front panel for custom engraved button labels
- One-way infra-red communication
- Stainless-steel and wooden or plastic enclosure
- Quick recharging by delivered docking station
- Easy to use
- Charging indication

DESCRIPTION

The irCUE wireless handheld remote control panel is a compact infrared transmitter with a distinctive black plastic / wood and stainless steel enclosure. Supplied in three versions of wood – mahogany, white birch and oak and two versions of plastic, the irCUE is designed to blend with the most critical environments. Providing 33 dedicated buttons, the irCUE remote control is prepared to fit perfectly in your hand. It is the ideal solution for control of audio, video and lightning in boardrooms, conference rooms and homes.

APPLICATIONS

- Commercial single-room applications
- Museums
- Meeting rooms, conference rooms, boardrooms
- Complete residential home automation



STANDARD BOX CONTENTS

irCUE
Tabletop docking station
Power supply
Warranty Conditions, CE Declaration, RoHS Declaration
Data Sheet, Cue System Connector Wiring Sheet
CUE Application CD

ORDER INFORMATION

Product codes

CS0324-001 wooden enclosure, white birch
CS0324-002 wooden enclosure, oak
CS0324-003 wooden enclosure, mahogany
CS0324-004 plastic enclosure, stardust black
CS0324-005 plastic enclosure, abrasive white



Other wooden enclosures are available on request.

DELIVERED ACCESSORIES

Each irCUE comes with a tabletop docking station, which makes it possible to quickly recharge the built-in battery. If the irCUE is placed at the docking station, it remains functional and can be used as a tabletop panel.



APPLICATION NOTE

Following IR receivers can be used for system connection.



ipCUE's
internal receiver



irCUE Receiver 485



keypadCUE-8-L
internal receiver



keypadCUE-8-E
internal receiver

Tx Time Transmitters



Tx Time 2



Tx Time 4

SPECIFICATIONS

Buttons

- 2 for Tx Time 2
- 4 for Tx Time 4

Wireless communication

- Radio frequency 433.92 MHz
- Max. range 60 m
- Number of codes $2^{24} + 2^{32}(H)$
- Automatic limitation of transmission time 25 s

Power supply

- Lithium battery 3 V, CR 2430
- Battery lifetime up to 10 years

Physical

- Plastic enclosure
- Protection IP20
- Dimensions 83 x 81 x 16 mm / 3.3" x 3.2" x 0.6"
- Weight 0.1 kg / 0.2 lb

Operating environment

- Temperature -10° to 55° C
- Humidity 10% to 90% non-condensing

STANDARD BOX CONTENTS

- Transmitter
- Warranty Conditions, CE Declaration
- RoHS Declaration
- Data Sheet

APPLICATION NOTE

For system connection use Rx1 DIN /Data Wireless Receiver, product code CS0318.401. The receiver can be connected to ipCUE controllers using RS-232 bi-directional communication port.



MAIN FEATURES

- Two and four buttons models available
- Innovative solutions in newly designed installations
- No need to cut the walls because of control wire installations
- Very fast installation - mostly not longer than a few minutes
- Clean and dustless installation without wet processes
- Encoded signal, no opportunity to misuse or interfere
- Sufficient coverage for all typical applications
- Control from points normally dangerous for electric installations (bathtubs, inflammable base, etc.)
- Best-selling design series of ABB switches
- Very long lifetime of lithium battery

DESCRIPTION

The Tx Time wall mounted transmitter are designed to correspond with the new range of ABB switches with modern square frames, and it is possible to use it either by itself or in various multiple frames combining its different colored designs. The flat push button is mechanically divided into two or four parts. The transmitter is powered by lithium 3 V battery, and it is possible to mount it practically everywhere - on flammable surfaces, near a child's bed, a sink, on the glass, etc., yet there is no risk of injury being caused by electricity or risk of fire. The transmitter is mounted using screws or double-sided adhesive tape. All wall transmitters consist of a frame and a fingerboard. If you install more transmitters at one place, it is good to use multiple frames - for more information please contact sales@cuesystem.com.

APPLICATIONS

- Complete residential home automation
- Complete building automation
- Commercial single-room and multi-room applications
- Reconstructions and later installations

ORDER INFORMATION

Product codes

2 buttons	4 buttons	Color
CS0310.401	CS0311.401	White / Ice White
CS0310.402	CS0311.402	White / Ice Green
CS0310.403	CS0311.403	White / White
CS0310.408	CS0311.408	Titan
CS0310.431	CS0311.431	Arctic Blue
CS0310.432	CS0311.432	Silver
CS0310.433	CS0311.433	Champagne
CS0310.434	CS0311.434	Anthracite



Tx Element Transmitters



Tx Element 2



Tx Element 4

SPECIFICATIONS

Buttons

- 2 for Tx Element 2
- 4 for Tx Element 4

Wireless communication

- Radio frequency 433.92 MHz
- Max. range 60 m
- Number of codes $2^{24} + 2^{32}(H)$
- Automatic limitation of transmission time 25 s

Power supply

- Lithium battery 3 V, CR 2430
- Battery lifetime up to 10 years

Physical

- Plastic enclosure
- Protection IP20
- Dimensions 88 x 81 x 16 mm / 3.5" x 3.2" x 0.6"
- Weight 0.1 kg / 0.2 lb

Operating environment

- Temperature -10° to 55° C
- Humidity 10% to 90% non-condensing

STANDARD BOX CONTENTS

- Transmitter
- Warranty Conditions, CE Declaration
- RoHS Declaration
- Data Sheet

APPLICATION NOTE

For system connection use Rx1 DIN /Data Wireless Receiver, product code CS0318.401. The receiver can be connected to ipCUE controllers using RS-232 bi-directional communication port.



MAIN FEATURES

- Two and four buttons models available
- Innovative solutions in newly designed installations
- No need to cut the walls because of control wire installations
- Very fast installation - mostly not longer than a few minutes
- Clean and dustless installation without wet processes
- Encoded signal, no opportunity to misuse or interfere
- Sufficient coverage for all typical applications
- Control from points normally dangerous for electric installations (bathtubs, inflammable base, etc.)
- Best-selling design series of ABB switches
- Very long lifetime of lithium battery

DESCRIPTION

The Tx Element transmitter is designed to correspond with the new range of ABB switches with elegant oval frames, and it is possible to use it either by itself or in various multiple frames combining its different colored designs. The flat push button is mechanically divided into two or four parts. The transmitter is powered by lithium 3 V battery, and it is possible to mount it practically everywhere - on flammable surfaces, near a child's bed, on a sink, on the glass, etc., yet there is no risk of injury being caused by electricity or risk of fire. The transmitter is mounted using screws or double-sided adhesive tape. All wall transmitters consist of a frame and a fingerboard. If you install more transmitters at one place, it is good to use multiple frames - for more information please contact sales@cuesystem.com.

APPLICATIONS

- Complete residential home automation
- Complete building automation
- Commercial single-room and multi-room applications
- Reconstructions and later installations

ORDER INFORMATION

Product codes

2 buttons	4 buttons	Color	
CS0312.401	CS0313.401	White / Ice White	
CS0312.403	CS0313.403	White / White	
CS0312.404	CS0313.404	White / Ice Grey	
CS0312.407	CS0313.407	Caramel / Ice Grey	
CS0312.421	CS0313.421	Ivory / Ice White	
CS0312.422	CS0313.422	Agave / Ice White	
CS0312.423	CS0313.423	Stormy / Ice grey	
CS0312.424	CS0313.424	Carmine / Ice grey	

Tx Pocket Transmitters



Tx Pocket 1

Tx Pocket 4

Tx Key

Tx Cross 4

SPECIFICATIONS

Buttons

- 1 for Tx Pocket 1
- 4 for Tx Pocket 4
- 2 for Tx Key
- 4 for Tx Cross

Wireless communication

- Radio frequency 433.92 MHz
- Max. range
 - 40 m for Tx Key and Tx Cross
 - 50 m for Tx Pocket 1 and Tx Pocket 4
- Number of codes $2^{24} + 2^{32}(H)$
- Automatic limitation of transmission time 25 s

Power supply

- Battery
 - Alcaline 12 V, E23 for Tx Pocket 1 and Tx Pocket 4
 - 2x lithium, CR 1616 for Tx Key and Tx Cross
- Battery lifetime 2 to 3 years

Physical

- Plastic enclosure
- Dimensions (WxHxD)
 - 38 x 78 x 13 mm / 1.5" x 3.1" x 0.5" Tx Pocket 1
 - 38 x 78 x 13 mm / 1.5" x 3.1" x 0.5" Tx Pocket 4
 - 30 x 51 x 10 mm / 1.2" x 2.0" x 0.4" Tx Key
 - 26 x 64 x 10 mm / 1.0" x 2.5" x 0.4" Tx Cross 4

Weight

- 42 g / 0.1 lb Tx Pocket 1
- 45 g / 0.1 lb Tx Pocket 4
- 18 g / 0.1 lb Tx Key
- 40 g / 0.1 lb Tx Cross 4

Operating environment

- Temperature -10° to 55° C
- Humidity 10% to 90% non-condensing

MAIN FEATURES

- Four models available
- Put away holder supplied with Tx Pocket 1 and Tx Pocket 4
- Encoded signal, no opportunity to misuse or interfere

DESCRIPTION

The portable **Tx Pocket 1** transmitter is equipped with one big pushbutton, which can be easily controlled even with thick gloves on, and also children or disabled people can use it easily without problems. It is suitable for control of, for example, manipulation trolley services, wireless control of entrance gates, for children or disabled people for opening of electrical locks, calls to personnel or calls for help. It is supplied with a put away holder.

The portable **Tx Pocket 4** transmitter enables remote control of up to four independent appliances like, for example, garage doors, indoor and outdoor lights, blinds, etc. It is characterized by its small parameters and its relatively wide reach. It is also supplied with a put away holder.

The portable **Tx Key** transmitter is the smallest available transmitter on the market. It enables controlling up to two appliances, for example, the central locking in a car and the garage door, or outdoors lights in the driveway and the electrical locking of the entrance door. The transmitter is designed to fit on a key ring and its oval-shaped cover slips easily into any pocket.

The portable **Tx Cross 4** transmitter serves for controlling up to four different independent appliances. You are sure to appreciate the small dimensions and intuitive control of the newly designed cross button. It allows lighting or a projector screen to be controlled as easily as a garage door.

APPLICATIONS

- Complete residential home automation
- Complete building automation
- Commercial single-room and multi-room applications

STANDARD BOX CONTENTS

Transmitter
Put away holder for Tx Pocket 1 and Tx Pocket 4
Warranty Conditions, CE Declaration, RoHS Declaration
Data Sheet

ORDER INFORMATION

Product codes	
CS0314.401	Tx Pocket 1
CS0315.401	Tx Pocket 4
CS0316.401	Tx Key
CS0317.401	Tx Cross 4

STANDARD ACCESSORIES

The Tx Pocket 1 and Tx Pocket 4 are supplied with put away holder.

APPLICATION NOTE

For system connection use Rx1 DIN /Data Wireless Receiver, product code CS0318.401. The receiver can be connected to ipCUE controllers using RS-232 bi-directional communication port.



Wired Button Panels

cue

keypadCUE-8-L

cuerium



MAIN FEATURES

- 8 buttons
- Changeable paper button labels for temporary installation
- Replaceable front panel plastic strips for custom engraved button labels for final installation
- Programmable LED indication for each button
- Built-in IR sensor for irCUE link
- Stainless steel - plastic or wood enclosure
- On-wall installation
- Compatible with standard European wall boxes

SPECIFICATIONS

Buttons

8x black plastic button

Indication

8x programmable LED

Built-in sensors

IR sensor for wireless control panel link

System communication

CUEwire, 4-pin connector

Power supply

24 VDC (+/- 20%), 3 W

Physical

Stainless steel - plastic or wood enclosure

Dimensions 140 x 90 x 19 mm / 5.5" x 3.5" x 0.7"

Weight 0.4 kg / 0.9 lb

Operating environment

Temperature 10° to 40° C

Humidity 10% to 90% non-condensing

DESCRIPTION

Featuring a beautiful stainless steel architectural finish, these keypad is an elegant and powerful wall mounted control panel designed to be built into a standard European electrical wall box. The keypad provides 8 buttons, programmable indication and user changeable button labels. For temporary installation paper labels can be used. Engraved plastic labels can be used for final installation. The full function console keypad may be used as dedicated wired control panel for audio, video and operating environment functions.

APPLICATIONS

- Commercial single-room applications
- Meeting rooms, conference rooms, boardrooms
- Commercial huge multi-room and multi-floor distributed systems
- Complete residential home automation
- High-tech homes

ORDER INFORMATION

Product codes

CS0287-001 wooden enclosure, white birch

CS0287-002 wooden enclosure, oak

CS0287-003 wooden enclosure, mahogany

CS0287-004 plastic enclosure, stardust black

CS0287-005 plastic enclosure, abrasive white



Other wooden enclosures are available on request.

STANDARD BOX CONTENTS

Keypad

CUEwire Cable

Warranty Conditions, CE Declaration, RoHS Declaration

Data Sheet, Cue System Connector Wiring Sheet

CUE Application CD

keypadCUE-8-E

cuerium



SPECIFICATIONS

Buttons

8x black plastic button

Indication

8x programmable LED

Built-in sensors

IR sensor for wireless control panel link

System communication

CUEwire, 4-pin connector

Power supply

24 VDC (+/- 20%), 3 W

Physical

Stainless steel - plastic or wood enclosure
Dimensions 140 x 90 x 19 mm / 5.5" x 3.5" x 0.7"
Weight 0.4 kg / 0.9 lb

Operating environment

Temperature 10° to 40° C
Humidity 10% to 90% non-condensing

ORDER INFORMATION

Product codes

CS0288-001 wooden enclosure, white birch

CS0288-002 wooden enclosure, oak

CS0288-003 wooden enclosure, mahogany

CS0288-004 plastic enclosure, stardust black

CS0288-005 plastic enclosure, abrasive white



Other wooden enclosures are available on request.

MAIN FEATURES

- 8 buttons
- Replaceable front panel strips for custom engraved button labels
- Programmable LED indication for each button
- Built-in IR sensor for irCUE link
- Stainless steel - plastic or wood enclosure
- On-wall installation
- Compatible with standard European wall boxes

DESCRIPTION

Featuring a beautiful stainless steel architectural finish, these keypad is an elegant and powerful wall mounted control panel designed to be built into a standard European electrical wall box. The keypad provides 8 buttons and programmable indication. Button labels can be engraved to replaceable strips of the front panel. The full function console keypad may be used as dedicated wired control panel for audio, video and operating environment functions.

APPLICATIONS

- Commercial single-room applications
- Meeting rooms, conference rooms, boardrooms
- Commercial huge multi-room and multi-floor distributed systems
- Complete residential home automation
- High-tech homes

STANDARD BOX CONTENTS

Keypad

CUEwire Cable

Warranty Conditions, CE Declaration, RoHS Declaration

Data Sheet, Cue System Connector Wiring Sheet

CUE Application CD

keypadCUE-1G



SPECIFICATIONS

Buttons

- 8x round button
- Programmable two levels red back-light for each button

Bar graph

- 1x 20-LEDs bar graph

System communication

- CUEwire, 4-pin connector 5.08 mm

Power supply

- 24 VDC (+/- 20%), 3 W

Physical

- Stainless steel enclosure
- Dimensions 69 x 108 x 50 mm / 2.7" x 4.3" x 2.0"
- Weight 0.2 kg / 0.4 lb

Operating environment

- Temperature 10° to 40° C
- Humidity 10% to 90% non-condensing

MAIN FEATURES

- 8 buttons
- Programmable two levels red button back-light
- Changeable button labels printed on a laser printer
- One 20-LEDs bar graph
- Delivered with plastic back box

DESCRIPTION

Featuring a beautiful stainless steel architectural finish, these keypads are an elegant and powerful wall mounted control panels designed to be built into a 1-gang electrical boxes. The keypad provides 8 buttons supported with backlight, programmable indication and user changeable button labels that can be printed on a laser printer and inserted into the keypad. This model is equipped with one 20-LEDs bar graph. The full function console keypad may be used as dedicated wired controller for audio, video and operating environment functions.

APPLICATIONS

- Commercial single-room applications
- Meeting rooms, conference rooms, boardrooms
- Commercial huge multi-room and multi-floor distributed systems
- Complete residential home automation
- High-tech homes

ORDER INFORMATION

Product code CS0221

STANDARD BOX CONTENTS

Keypad
Plastic back box 1G
CUEwire Cable
Warranty Conditions, CE Declaration, RoHS Declaration
Data Sheet, Cue System Connector Wiring Sheet
CUE Application CD

keypadCUE-2G



SPECIFICATIONS

Buttons

- 16x round button
- Programmable two levels red back-light for each button

Bar graph

- 2x 20-LEDs bar graph

System communication

- CUEwire, 4-pin connector 5.08 mm

Power supply

- 24 VDC (+/- 20%), 4 W

Physical

- Stainless steel enclosure
- Dimensions 110 x 108 x 50 mm / 4.3" x 4.3" x 2.0"
- Weight 0.4 kg / 0.9 lb

Operating environment

- Temperature 10° to 40° C
- Humidity 10% to 90% non-condensing

MAIN FEATURES

- 16 buttons
- Programmable two levels red button back-light
- Changeable button labels printed on a laser printer
- Two 20-LEDs bar graphs
- Delivered with plastic back box

DESCRIPTION

Featuring a beautiful stainless steel architectural finish, these keypads are an elegant and powerful wall mounted control panels designed to be built into a 2-gang electrical boxes. The keypad provides 16 buttons supported with backlight, programmable indication and user changeable button labels that can be printed on a laser printer and inserted into the keypad. This model is equipped with two 20-LEDs bar graph. The full function console keypad may be used as dedicated wired controller for audio, video and operating environment functions.

APPLICATIONS

- Commercial single-room applications
- Meeting rooms, conference rooms, boardrooms
- Commercial huge multi-room and multi-floor distributed systems
- Complete residential home automation
- High-tech homes

ORDER INFORMATION

Product code CS0222

STANDARD BOX CONTENTS

Keypad
Plastic back box 2G
CUEwire Cable
Warranty Conditions, CE Declaration, RoHS Declaration
Data Sheet, Cue System Connector Wiring Sheet
CUE Application CD

keypadCUE-3G



SPECIFICATIONS

Buttons

- 24x round button
- Programmable two levels red back-light for each button

Bar graph

- 2x 20-LEDs bar graph

System communication

- CUEwire, 4-pin connector 5.08 mm

Power supply

- 24 VDC (+/- 20%), 4 W

Physical

- Stainless steel enclosure
- Dimensions 155 x 108 x 50 mm / 6.1" x 4.3" x 2.0"
- Weight 1.0 kg / 2.2 lb

Operating environment

- Temperature 10° to 40° C
- Humidity 10% to 90% non-condensing

MAIN FEATURES

- 24 buttons
- Programmable two levels red button back-light
- Changeable button labels printed on a laser printer
- Two 20-LEDs bar graphs
- Delivered with plastic back box

DESCRIPTION

Featuring a beautiful stainless steel architectural finish, these keypads are an elegant and powerful wall mounted control panels designed to be built into a 3-gang electrical boxes. The keypad provides 24 buttons supported with backlight, programmable indication and user changeable button labels that can be printed on a laser printer and inserted into the keypad. This model is equipped with two 20-LEDs bar graph. The full function console keypad may be used as dedicated wired controller for audio, video and operating environment functions.

APPLICATIONS

- Commercial single-room applications
- Meeting rooms, conference rooms, boardrooms
- Commercial huge multi-room and multi-floor distributed systems
- Complete residential home automation
- High-tech homes

ORDER INFORMATION

Product code CS0223

STANDARD BOX CONTENTS

Keypad
Plastic back box 3G
CUEwire Cable
Warranty Conditions, CE Declaration, RoHS Declaration
Data Sheet, Cue System Connector Wiring Sheet
CUE Application CD

keyboardCUE-S



SPECIFICATIONS

Buttons

8x rectangle red back-light button

Indication

8x programmable red LED

System communication

CUEwire, 4-pin connector 5.08 mm

Power supply

24 VDC (+/- 20%), 3 W, 2-pin 3.5 mm

Physical

Stainless steel – solid wood enclosure

Dimensions (WxHxD) 86 x 98 x 27 mm / 3.4" x 3.9" x 1.1"

Weight 0.4 kg / 0.9 lb

Operating environment

Temperature 10° to 40° C

Humidity 10% to 90% non-condensing

MAIN FEATURES

- 8 buttons
- 8 programmable indication LEDs
- Changeable button labels printed on a laser printer

DESCRIPTION

The elegant and innovative wired keyboardCUE-S is a tabletop programmable control panel that is available in varieties of solid wood finishes with stainless steel trim. The keyboardCUE-S provides eight buttons supported with backlighting and user changeable button labels that can be directly printed on a laser printer and inserted into the switch caps. The full-function console keyboard may be used as a dedicated wired controller for audio, video and Operating environment functions.

APPLICATIONS

- Commercial single-room applications
- Meeting rooms, conference rooms, boardrooms
- Complete residential home automation
- High-tech homes

ORDER INFORMATION

Product codes

CS0174-W white birch enclosure

CS0174-O oak enclosure

CS0174-M mahogany enclosure



Other wooden enclosures are available on request.

STANDARD BOX CONTENTS

Keyboard

CUEwire Cable

Warranty Conditions, CE Declaration, RoHS Declaration

Data Sheet, Cue System Connector Wiring Sheet

CUE Application CD

Special Control Panels

cue



SPECIFICATIONS

Display output

Resolution up to 1024 x 768 pixels
65 536 colors (High Color)
DB-15-female connector

Memory

128 MB RAM
CompactFlash Card min. 512 MB (upgradeable)

Software technologies

Admin Web

Video inputs

2x Composite video, BNC connector
1x S-video, 2x BNC connector

Other connection

1x RS-232, DB -9-male connector
1x Keyboard PS/2, Mini-DIN-6-female connector

Button

Reset

LED indicator

Power

System communication

10/100 BaseT Ethernet, RJ-45 connector
CUEwire, RJ-45 connector

Power supply

24 VDC (+/- 20%), 15 W, 2-pin 5.08 connector

Physical

Stainless steel enclosure
Dimensions Rack 19", 1 U, depth 160 mm (6.3")
Weight 3.6 kg / 7.9 lb

Operating environment

Temperature 10° to 40° C
Humidity 10% to 90% non-condensing

MAIN FEATURES

- Interface for non CUE touch panel integration
- High Color display output up to 1024 x 768 pixels
- Wired Ethernet communication
- Real-time video from composite and S-video inputs
- Variety of pointing devices can be used
- Web server and Admin Web pages for setup and diagnostics
- XPL Inside inside compatible with CUE programming tools
- 19" rack mountable

DESCRIPTION

The touchCUE-V /i touch panel interface allows to turn any plasma monitor, LCD display or video projection system into a CUE touch panel. Accepting composite (NTSC/PAL) video and S-video (Y/C) inputs, the video can be displayed either full screen or in a video window. Output from the touchCUE-V /i is up to 1024 x 768 providing stunning high color images for both graphics and video. It can be controlled by a variety of pointing devices including a mouse or touch-sensitive overlay. Innovative design features like min. 512 MB of standard data storage provides a level of capability not available with other touch panel interface devices. Fully compatible with CUE controllers, the touchCUE-V /i provides the ultimate one-touch multimedia solution for boardrooms, conference rooms and high-tech homes.

APPLICATIONS

- Multimedia presentations
- Interactive kiosks
- Command centers
- Public information
- Voting systems

ORDER INFORMATION

Product code CS0190

STANDARD BOX CONTENTS

Touch panel interface
Ethernet cable straight-through, Ethernet cable crossed-over
CUEwire cable
CUEadapter /30W incl. power cable
Cleaning tissue
Warranty Conditions, CE Declaration, RoHS Declaration
Touch Panel Data Sheet, Cue System Connector Wiring Sheet
CUE Application CD



SPECIFICATIONS

Display output for service only

Resolution 1024 x 768 pixels
65 536 colors (High Color)
DB-15-female connector

Memory

128 MB RAM
CompactFlash Card min. 512 MB (upgradeable)

Software technologies

Web server

Other connection

1x RS-232, DB -9-male connector
1x Keyboard/Mouse PS/2, Mini-DIN-6-female connector

Button

Reset

LED indicator

Power

System communication

10/100 BaseT Ethernet, RJ-45 connector
CUEwire, RJ-45 connector

Power supply

24 VDC (+/- 20%), 15 W, 2-pin 5.08 connector

Physical

Stainless steel enclosure
Dimensions Rack 19", 1 U, depth 160 mm (6.3")
Weight 3.6 kg / 7.9 lb

Operating environment

Temperature 10° to 40° C
Humidity 10% to 90% non-condensing

MAIN FEATURES

- Complete web-control interface
- User layouts for remote control designed in Cue Director
- Web server for remote access
- Cue Director software compatibility
- Common web browser connection
- Password access security
- Remote configuration and system statistics
- HTTP based communication protocol
- Optional client connectivity via standard HTTP proxy servers
- 19" rack mountable

DESCRIPTION

The eCUE is a complete web-control interface, that enables control, setup, and remote diagnostics of CUE System via a 10/100 BaseT LAN/WAN. eCUE acts like a standard IP addressable PC on the network and executes standard TCP/IP connectivity procedures. Key features are HTTP server for remote access, Cue Director software compatibility, common web browser connection, password access security, remote configuration and system statistics using common web browser, user layouts for remote control designed in Cue Director software, HTTP based communication protocol and optional client connectivity via standard HTTP proxy servers.

APPLICATIONS

- Business and professional project
- Universities
- Multi-room projects
- Complete home automation

ORDER INFORMATION

Product code CS0173

STANDARD BOX CONTENTS

Web-control interface
Ethernet cable straight-through, Ethernet cable crossed-over
CUEwire cable
CUEadapter /30W incl. power cable
Warranty Conditions, CE Declaration, RoHS Declaration
Touch Panel Data Sheet, Cue System Connector Wiring Sheet
CUE Application CD



SPECIFICATIONS

Touch-screen display

Active matrix color LCD
Size 15" / 381 mm diagonal
Aspect ratio 4:3
Resolution 1024 x 768 pixels
16 777 216 (True Color)
Horizontal frequency 30 – 61 kHz
Vertical frequency 55 – 75 Hz
Resistive membrane touch overlay
Adjustable screen tilt 0° - 80°

Buttons

Power
Menu, Right, Left, Exit for on screen menu navigation

LED indicator

Power

Connection

VGA input, DB-15-female connector
Touch sensor RS-232 output, DB-9-female connector

Power supply

24 VDC (+/- 20%), 40 W, 2-pin 5.08 connector

Physical

Stainless steel – real wood enclosure
Dimensions 362 x 287 x 335 mm / 14.3" x 11.3" x 13.2"
Weight 8 kg / 17.6 lb

Operating environment

Temperature 10° to 40° C
Humidity 10% to 90% non-condensing

STANDARD ACCESSORIES

The standard accessories of monitorCUE it is external Connector Module equipped with VGA input, serial output (for touch overlay) and power input. Connection between monitorCUE and Connector module is provided by cable DB-15 / DB-15. The Connector Module is suitable for hidden installation (under the table etc.).

MAIN FEATURES

- 15" active matrix touch screen display 1024 x 768 pixels
- Resistive membrane touch overlay
- On screen display menu
- Adjustable screen tilt
- Power supply 24 VDC
- Wood and stainless steel enclosure
- Three standard woods – white birch, oak, mahogany
- External Connector Module

DESCRIPTION

The monitorCUE is 15" tabletop touch monitor. Designed to blend with even the most critical environments, the beautiful enclosure is crafted from solid wood with stainless steel trim and is available in your choice of mahogany, white birch or oak finishes. But the beauty of the monitorCUE is more than skin deep. This 15" touch-sensitive active-matrix color LCD screen produces stunning images and graphics in True Color at 1024 x 768 resolution. Innovative design features like the easy-to-adjust, 0 – 80 degrees tilting mechanism provides a level of elegance and capability not available with any other touch monitor. The state-of-the-art monitorCUE is ideal for applications in audio, video, lighting and Operating environment control providing the ultimate solution for boardrooms, conference rooms and residential systems.

APPLICATIONS

- Meeting rooms
- Conference rooms
- Boardrooms
- High-tech homes

ORDER INFORMATION

Product codes

CS0203-W	white birch enclosure
CS0203-O	oak enclosure
CS0203-M	mahogany enclosure



Other wooden enclosures are available on request.

STANDARD BOX CONTENTS

monitorCUE
Connector module, Cable DB-15 / DB-15
VGA cable, Serial cable
CUEadapter /65W incl. power cable
Cleaning Tissue
Warranty Conditions, CE Declaration, RoHS Declaration
Data Sheet, Cue System Connector Wiring Sheet
CUE Application CD

Controllers

cue



SPECIFICATIONS

Control ports

- 2x Bi-directional serial RS-232, 5-pin connector
- 4x Bi-directional serial RS-232/422/485, 5-pin connector
- 1x Bi-directional serial RS-485 (CUEwire), 4-pin connector
- 8x IR /serial output (IR up to 1.2 MHz), 2-pin connector
- 8x General I/O, 2-pin connector, can be configured as
 - Analog input 0 – 5 V
 - Digital open collector output, max. 80 mA
- 2x Relay 24 V, max. 0.5 A, 3-pin connector

Power output

- 5 VDC, max. 1 A

Internal IR sensor

- IR code capture, IR wireless control panel link

LED indicators

- Power, CUEnet, CPU, all control ports

Button

- Reset / Set factory default

Real time and date

- RTC with battery backup

Memory

- Internal RAM 16 MB
- Internal flash 16 MB

Software technologies

- Admin Web, XPL Inside, WXL

System communication

- 10/100 BaseT Ethernet, RJ-45 connector
- CUEwire, 4-pin connector 5.08 mm

Power supply

- 24 VDC (+/-20%), 12 W, 2-pin connector 5.08 mm

Physical

- Blue metal enclosure
- Dimensions
 - 210 x 43.5 x 92 mm / 8.3" x 1.7" x 3.6"
 - 1/2 rack space, 1 U
- Weight 0.6 kg / 1.3 lb

Operating environment

- Temperature 10° to 40° C
- Humidity 10% to 90% non-condensing

ORDER INFORMATION

Product code CS0251

MAIN FEATURES

- Based on the Motorola ColdFire® processor
- Ethernet IP enabled
- Non-volatile flash memory for user application
- Onboard real time clock
- Fully compatible with current CUE communication buses
- Standard control ports - bi-directional serial, IR/serial, general I/O and relay ports
- Web server and Admin Web pages for setup and diagnostics
- XPL Inside compatible with CUE programming tools
- Front panel indicators for each control port
- Unified enclosure design for desktop, rack, DIN rail and wall installation - no special models required
- 19" rack installation available with accessories

DESCRIPTION

The ipCUE-alpha is a member of Ethernet IP enabled controller family. The control ports include bi-directional serial channels RS-232/422/485, serial outputs, infrared outputs up to 1.2 MHz, general I/O ports that can be configured as analog inputs or digital outputs and 24 volts relay outputs. The Ethernet port allows for bi-directional IP control of any manufacturer IP enabled products. The ipCUE-alpha is fully compatible with CUE's existing range of button panels and touch panels through and comes equipped with a CUEwire port. For convenience there has also been a +5 VDC output added to the design for powering external low-voltage equipment. The ipCUE-alpha is equipped with internal IR sensors. The sensors allow capture IR codes and receive IR codes from hand-held transmitters. Convenient for testing and troubleshooting this model also comes with front panel indicator LEDs that indicate the status of all the control ports. The ipCUE-alpha keeps date and time with its onboard real time clock (RTC) and thus allowing for a wide variety of distributed intelligence scheduling applications.

The ipCUE-alpha comes complete with a web server and allows for setup, configuration, and testing through a standard web browser. This web-based interface allows for the graphical monitoring and control of all ports, which provides a truly time saving method for testing and troubleshooting.

The ipCUE-alpha is fully compatible with WXL language which was designed as a support of a web interface for CUE system. The WXL is web compliant programming language for direct control of controller and touch panel control ports as well as for interaction between web control page and XPL application. The web control pages are stored in controller web storage section. Standard web development tools (e.g. HTML editors, Adobe® Flash®) can be used for control panel design.

APPLICATIONS

- Commercial single-room applications
- Commercial huge multi-room and multi-floor distributed systems
- Home theater applications
- Complete residential home automation

STANDARD BOX CONTENTS

Controller, Connector set, 4x IR Adapter /i
Ethernet cable straight-through, Ethernet cable crossed-over
CUEadapter /30W incl. power cable
Warranty Conditions, CE Declaration, RoHS Declaration
Controller Data Sheet, Cue System Connector Wiring Sheet
CUE Application CD



SPECIFICATIONS

Control ports

- 2x Bi-directional serial RS-232, 5-pin connector
- 1x Bi-directional serial RS-485 (CUEwire), 4-pin connector
- 8x IR /serial output (IR up to 1.2 MHz), 2-pin connector

Power output

- 5 VDC, max. 1 A

Internal IR sensor

- IR code capture, IR wireless control panel link

LED indicators

- Power, CUEnet, CPU, all control ports

Button

- Reset / Set factory default

Real time and date

- RTC with battery backup

Memory

- Internal RAM 16 MB
- Internal flash 16 MB

Software technologies

- Admin Web, XPL Inside, WXL

System communication

- 10/100 BaseT Ethernet, RJ-45 connector
- CUEwire, 4-pin connector 5.08 mm

Power supply

- 24 VDC (+/-20%), 10 W, 2-pin connector 5.08 mm

Physical

- Blue metal enclosure
- Dimensions
210 x 43.5 x 92 mm / 8.3" x 1.7" x 3.6"
- 1/2 rack space, 1 U
- Weight 0.5 kg / 1.1 lb

Operating environment

- Temperature 10° to 40° C
- Humidity 10% to 90% non-condensing

ORDER INFORMATION

Product code CS0252

MAIN FEATURES

- Based on the Motorola ColdFire® processor
- Ethernet IP enabled
- Non-volatile flash memory for user application
- Onboard real time clock
- Firmware upgradeable using Admin Web pages
- Fully compatible with current CUE communication buses
- Standard control ports - bi-directional serial and IR/serial
- Web server and Admin Web pages for setup and diagnostics
- XPL Inside compatible with CUE programming tools
- Front panel indicators for each control port
- Unified enclosure design for desktop, rack, DIN rail and wall installation - no special models required
- 19" rack installation available with accessories

DESCRIPTION

The ipCUE-beta is a member of Ethernet IP enabled controller family. The control ports include bi-directional serial channels RS-232, serial outputs and infrared outputs up to 1.2 MHz. The Ethernet port allows for bi-directional IP control of any manufacturer IP enabled products. The ipCUE-beta is fully compatible with CUE's existing range of button panels and touch panels through and comes equipped with a CUEwire port. For convenience there has also been a +5 VDC output added to the design for powering external low-voltage equipment. The ipCUE-beta is equipped with internal IR sensors. The sensors allow capture IR codes and receive IR codes from hand-held transmitters. Convenient for testing and troubleshooting this model also comes with front panel indicator LEDs that indicate the status of all the control ports. The ipCUE-beta keeps date and time with its onboard real time clock (RTC) and thus allowing for a wide variety of distributed intelligence scheduling applications.

The ipCUE-beta comes complete with a web server and allows for setup, configuration, and testing through a standard web browser. This web-based interface allows for the graphical monitoring and control of all ports, which provides a truly time saving method for testing and troubleshooting.

The ipCUE-beta is fully compatible with WXL language which was designed as a support of a web interface for CUE system. The WXL is web compliant programming language for direct control of controller and touch panel control ports as well as for interaction between web control page and XPL application. The web control pages are stored in controller web storage section. Standard web development tools (e.g. HTML editors, Adobe® Flash®) can be used for control panel design.

APPLICATIONS

- Commercial single-room applications
- Commercial huge multi-room and multi-floor distributed systems
- Home theater applications
- Complete residential home automation

STANDARD BOX CONTENTS

Controller, Connector set, 4x IR Adapter /i
Ethernet cable straight-through, Ethernet cable crossed-over
CUEadapter /30W incl. power cable
Warranty Conditions, CE Declaration, RoHS Declaration
Controller Data Sheet, Cue System Connector Wiring Sheet
CUE Application CD



SPECIFICATIONS

Control ports

- 2x Bi-directional serial RS-232, 5-pin connector
- 1x Bi-directional serial RS-485 (CUEwire), 4-pin connector
- 2x IR /serial output (IR up to 1.2 MHz), 2-pin connector
- 8x General I/O, 2-pin connector, can be configured as
 - Analog input 0 – 5 V
 - Digital open collector output, max. 80 mA
- 2x Relay 24 V, max. 0.5 A, 3-pin connector

LED indicators

Power, CUEnet, CPU, all control ports

Button

Reset / Set factory default

Real time and date

RTC with battery backup

Memory

- Internal RAM 16 MB
- Internal flash 16 MB

Software technologies

Admin Web, XPL Inside, WXL

System communication

- 10/100 BaseT Ethernet, RJ-45 connector
- CUEwire, 4-pin connector 5.08 mm

Power supply

24 VDC (+/-20%), 10 W, 2-pin connector 5.08 mm

Physical

- Plastic enclosure, DIN rail compatible
- Dimensions 106 x 90 x 58 mm / 4.2" x 3.5" x 2.3"
- Weight 0.4 kg / 1.1 lb

Operating environment

- Temperature 10° to 40° C
- Humidity 10% to 90% non-condensing

ORDER INFORMATION

Product code CS0253

MAIN FEATURES

- Based on the Motorola ColdFire® processor
- Ethernet IP enabled
- Non-volatile flash memory for user application
- Onboard real time clock
- Firmware upgradeable using Admin Web pages
- Fully compatible with current CUE communication buses
- Standard control ports - bi-directional serial, IR/serial, general I/O, and relay
- Web server and Admin Web pages for setup and diagnostics
- XPL Inside compatible with CUE programming tools
- Front panel indicators for each control port
- Unified enclosure designed for DIN rail installation

DESCRIPTION

The ipCUE-gamma is a member of Ethernet IP enabled controller family. The control ports include bi-directional serial channels RS-232 and RS-485 (CUEwire), serial outputs, infrared outputs up to 1.2 MHz, general I/O ports that can be configured as analog inputs or digital outputs and 24 volts relay outputs. The Ethernet port allows for bi-directional IP control of any manufacturer IP enabled products. The ipCUE-gamma is fully compatible with CUE's existing range of button panels and touch panels through and comes equipped with a CUEwire port. Convenient for testing and troubleshooting this model also comes with front panel indicator LEDs that indicate the status of all the control ports. The ipCUE-gamma keeps date and time with its onboard real time clock (RTC) and thus allowing for a wide variety of distributed intelligence scheduling applications.

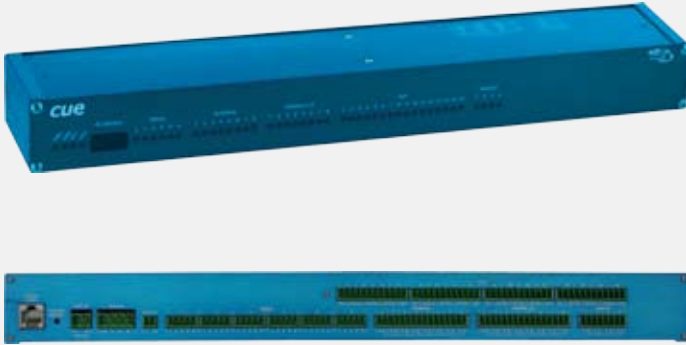
The ipCUE-gamma comes complete with a web server and allows for setup, configuration, and testing through a standard web browser. This web-based interface allows for the graphical monitoring and control of all ports, which provides a truly time saving method for testing and troubleshooting. The ipCUE-gamma is fully compatible with WXL language which was designed as a support of a web interface for CUE system. The WXL is web compliant programming language for direct control of controller and touch panel control ports as well as for interaction between web control page and XPL application. The web control pages are stored in controller web storage section. Standard web development tools (e.g. HTML editors, Adobe® Flash®) can be used for control panel design.

APPLICATIONS

- Commercial single-room applications
- Commercial huge multi-room and multi-floor distributed systems
- Home theater applications
- Complete residential home automation

STANDARD BOX CONTENTS

Controller, Connector set, 2x IR Adapter /i
Ethernet cable straight-through, Ethernet cable crossed-over
CUEadapter /30W incl. power cable
Warranty Conditions, CE Declaration, RoHS Declaration
Controller Data Sheet, Cue System Connector Wiring Sheet
CUE Application CD



SPECIFICATIONS

Control ports

- 2x Bi-directional serial RS-232, 5-pin connector
- 4x Bi-directional serial RS-232/422/485, 5-pin connector
- 1x Bi-directional serial RS-485 (CUEwire), 4-pin connector
- 8x IR /serial output (IR up to 1.2 MHz), 2-pin connector
- 8x General I/O, 2-pin connector, can be configured as
 - Analog input 0 – 5 V
 - Digital open collector output, max. 80 mA
- 4x Analog output 0 – 10 V, max. 10 mA, 2-pin connector
- 1x Relay 24 V, max. 0.5 A, 3-pin connector

Power output

- 5 VDC, max. 1 A

Internal IR sensor

- IR code capture, IR wireless control panel link

LED indicators

- Power, CUEnet, CPU, all control ports

Button

- Reset / Set factory default

Real time and date

- RTC with battery backup

Memory

- Internal RAM 16 MB
- Internal flash 16 MB

Software technologies

- Admin Web, XPL Inside, WXL

System communication

- 10/100 BaseT Ethernet, RJ-45 connector
- CUEwire, 4-pin connector 5.08 mm

Power supply

- 24 VDC (+/-20%), 18 W, 2-pin connector 5.08 mm

Physical

- Blue metal enclosure
- Dimensions
 - 421 x 43.5 x 92 mm / 16.6" x 1.7" x 3.6"
- 1 rack space, 1 U
- Weight 0.9 kg / 2.0 lb

Operating environment

- Temperature 10° to 40° C
- Humidity 10% to 90% non-condensing

ORDER INFORMATION

Product code CS0267

MAIN FEATURES

- Based on the Motorola ColdFire® processor
- Ethernet IP enabled
- Non-volatile flash memory for user application
- Onboard real time clock
- Firmware upgradeable using Admin Web pages
- Fully compatible with current CUE communication buses
- Standard control ports - bi-directional serial, IR/serial, general I/O, analog and relay
- Web server and Admin Web pages for setup and diagnostics
- XPL Inside compatible with CUE programming tools
- Unified enclosure design for desktop, rack, DIN rail and wall installation - no special models required
- 19" rack installation available with accessories

DESCRIPTION

The ipCUE-delta is a member of Ethernet IP enabled controller family. The control ports include bi-directional serial channels RS-232/422/485, serial outputs, infrared outputs up to 1.2 MHz, general I/O ports that can be configured as analog inputs or digital outputs and 24 volts relay outputs. The Ethernet port allows for bi-directional IP control of any manufacturer IP enabled products. The ipCUE-delta is fully compatible with CUE's existing range of button panels and touch panels through and comes equipped with a CUEwire port. For convenience there has also been a +5 VDC output added to the design for powering external low-voltage equipment. The ipCUE-delta is equipped with internal IR sensors. The sensors allow capture IR codes and receive IR codes from hand-held transmitters. Convenient for testing and troubleshooting this model also comes with front panel indicator LEDs that indicate the status of all the control ports. The ipCUE-delta keeps date and time with its onboard real time clock (RTC) and thus allowing for a wide variety of distributed intelligence scheduling applications. The ipCUE-delta comes complete with a web server and allows for setup, configuration, and testing through a standard web browser. This web-based interface allows for the graphical monitoring and control of all ports, which provides a truly time saving method for testing and troubleshooting. The ipCUE-delta is fully compatible with WXL language which was designed as a support of a web interface for CUE system. The WXL is web compliant programming language for direct control of controller and touch panel control ports as well as for interaction between web control page and XPL application. The web control pages are stored in controller web storage section. Standard web development tools (e.g. HTML editors, Adobe® Flash®) can be used for control panel design.

APPLICATIONS

- Commercial single-room applications
- Huge multi-room and multi-floor distributed systems
- Home theater applications
- Complete residential home automation

STANDARD BOX CONTENTS

Controller, Connector set, 4x IR Adapter /i
Ethernet cable straight-through, Ethernet cable crossed-over
CUEadapter /30W incl. power cable
Warranty Conditions, CE Declaration, RoHS Declaration
Controller Data Sheet, Cue System Connector Wiring Sheet
CUE Application CD



SPECIFICATIONS

Control ports

- 2x Bi-directional serial RS-232, 5-pin connector
- 1x Bi-directional serial RS-485 (CUEwire), 4-pin connector
- 8x IR /serial output (IR up to 1.2 MHz), 2-pin connector
- 8x General I/O, 2-pin connector, can be configured as
 - Analog input 0 – 5 V
 - Digital open collector output, max. 80 mA
- 4x Analog output 0 – 10 V, max. 10 mA, 2-pin connector
- 8x Relay 24 V, max. 0.5 A, 3-pin connector

Power output

- 5 VDC, max. 1 A

Internal IR sensor

- IR code capture, IR wireless control panel link

LED indicators

- Power, CUEnet, CPU, all control ports

Button

- Reset / Set factory default

Real time and date

- RTC with battery backup

Memory

- Internal RAM 16 MB
- Internal flash 16 MB

Software technologies

- Admin Web, XPL Inside, WXL

System communication

- 10/100 BaseT Ethernet, RJ-45 connector
- CUEwire, 4-pin connector 5.08 mm

Power supply

- 24 VDC (+/-20%), 15 W, 2-pin connector 5.08 mm

Physical

- Blue metal enclosure
- Dimensions
 - 210 x 43.5 x 92 mm / 8.3" x 1.7" x 3.6"
 - 1/2 rack space, 1 U
- Weight 0.6 kg / 1.3 lb

Operating environment

- Temperature 10° to 40° C
- Humidity 10% to 90% non-condensing

ORDER INFORMATION

Product code CS0268

MAIN FEATURES

- Based on the Motorola ColdFire® processor
- Ethernet IP enabled
- Non-volatile flash memory for user application
- Onboard real time clock
- Firmware upgradeable using Admin Web pages
- Fully compatible with current CUE communication buses
- Standard control ports - bi-directional serial, IR/serial, general I/O, analog and relay
- Web server and Admin Web pages for setup and diagnostics
- XPL Inside compatible with CUE programming tools
- Unified enclosure design for desktop, rack, DIN rail and wall installation - no special models required
- 19" rack installation available with accessories

DESCRIPTION

The ipCUE-epsilon is a new member of Ethernet IP enabled controller family. The control ports include bi-directional serial channels RS-232 and RS-485 (CUEwire), serial outputs, infrared outputs up to 1.2 MHz, general I/O ports that can be configured as analog inputs or digital outputs, analog outputs 0 – 10 V and 24 volts relay outputs. The Ethernet port allows for bi-directional IP control of any manufacturer IP enabled products. The ipCUE-epsilon is fully compatible with CUE's existing range of button panels and touch panels through and comes equipped with a CUEwire port. For convenience there has also been a +5 VDC output added to the design for powering external low-voltage equipment. The ipCUE-epsilon is equipped with internal IR sensors. The sensors allow capture IR codes and receive IR codes from hand-held transmitters. Convenient for testing and troubleshooting this model also comes with front panel indicator LEDs that indicate the status of all the control ports. The ipCUE-epsilon keeps date and time with its onboard real time clock (RTC) and thus allowing for a wide variety of distributed intelligence scheduling applications. The ipCUE-epsilon comes complete with a web server and allows for setup, configuration, and testing through a standard web browser. This web-based interface allows for the graphical monitoring and control of all ports, which provides a truly time saving method for testing and troubleshooting. The ipCUE-epsilon is fully compatible with WXL language which was designed as a support of a web interface for CUE system. The WXL is web compliant programming language for direct control of controller and touch panel control ports as well as for interaction between web control page and XPL application. The web control pages are stored in controller web storage section. Standard web development tools (e.g. HTML editors, Adobe® Flash®) can be used for control panel design.

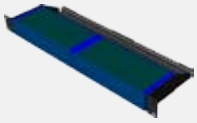
APPLICATIONS

- Commercial single-room applications
- Huge multi-room and multi-floor distributed systems
- Home theater applications
- Complete residential home automation

STANDARD BOX CONTENTS

Controller, Connector set, 4x IR Adapter /i
Ethernet cable straight-through, Ethernet cable crossed-over
CUEadapter /30W incl. power cable
Warranty Conditions, CE Declaration, RoHS Declaration
Controller Data Sheet, Cue System Connector Wiring Sheet
CUE Application CD

ipCUE Rack Mounting Kit



The ipCUE Rack Mounting Kit provides simple solution for installing ipCUE controllers and rfbaseCUE to the 19" rack. It allows install two half-rack sized ipCUEs or one full-sized ipCUE to single 19" unit rack space. All necessary accessories are supplied with the kit.

Stainless steel enclosure
Dimensions Rack 19", 1 U
Weight 1.3 kg / 2.9 lb
Product code CS0251-MR

IR Adapter /i



The IR Adapter /i is an infrared emitter used for controlling AV devices equipped with IR control capabilities. It is fastened on the receiver window of the AV device using a double-sided adhesive tape.

Connector 2-pin 3.5 mm
Cable length 2 m / 6.6 ft
Product Code CS0256

Opto-Input Adapter /i



Any status indicator on the controlled device can be read using the Opto-Input Adapter /i photosensitive cell. The Opto-Input Adapter /i is fastened on the indicator using a double-sided adhesive tape.

Connector 2-pin 3.5 mm
Cable length 2 m / 6.6 ft
Product Code CS0257

CUEwire Cable



The CUEwire Cable is used for CUEwire connection.

Connectors
4-pin 5.08 mm, 4-pin 5.08 mm
Product codes
CA0140-P05 length 0.5 m / 1.6 ft
CA0140-P30 length 3.0 m / 9.8 ft
CA0140-PU user cable length

CUEwire Splitter



The CUE wire Splitter is a device that enables connection up to 4 devices to one controller with a use of CUE wire.

Connectors
6x 4-pin 5.08 mm
1x 2-pin 5.08 mm
Product code
CS232

Serial IO Cable /i



The Serial IO Cable allows system connectivity to controlled devices that are equipped with RS-232, RS-422 or RS-485 serial communications. The connector and pin description need to be specified. This information, as well as the communication protocol, can typically be found in the user manual of the controlled device. If the equipment cannot be found in our library, and the connector is not explicitly described in your order, the cable will be delivered without a connector.

Connectors
5-pin 3.5 mm
Output connector depends on device
Product codes
CA0180-P05 length 0.5 m / 1.6 ft
CA0180-P30 length 3.0 m / 9.8 ft
CA0180-PU user cable length

Serial IO Cable DTE /i



The Serial IO Cable DTE /i allows system connectivity to controlled devices that are equipped with RS-232 serial communication.

Connectors
5-pin 3.5 mm, DB-9-M
Product codes
CA0181-P05 length 0.5 m / 1.6 ft
CA0181-P30 length 3.0 m / 9.8 ft
CA0181-PU user cable length

Serial IO Cable DCE /i



The Serial IO Cable DCE /i allows system connectivity to controlled devices that are equipped with RS-232 serial communication.

Connectors
5-pin 3.5 mm, DB-9-F
Product codes
CA0182-P05 length 0.5 m / 1.6 ft
CA0182-P30 length 3.0 m / 9.8 ft
CA0182-PU user cable length

CUEring Cable /i



The CUEring Cable /i is a data cable that enables communication between controllers and interfaces.

Connectors
5-pin 3.5 mm, DB-9-male
Product codes
CA0170-P05 length 0.5 m / 1.6 ft
CA0170-P30 length 3.0 m / 9.8 ft
CA0170-PU user cable length

IR Sprayer



SPECIFICATIONS

Connection

To controller's IR /serial output, 2-pin connector

Power supply

5 VDC, 1 W, 2-pin connector

Physical

Black plastic enclosure

Dimensions

44 x 33 x 22 mm / 1.7" x 1.3" x 0.9"

Weight 0.1 kg / 0.2 lb

Operating environment

Temperature 10° to 40° C

Humidity 10% to 90% non-condensing

STANDARD BOX CONTENTS

IR Sprayer incl. cable and connectors

Double-sided adhesive tape

Warranty Conditions, CE Declaration, RoHS Declaration

Data Sheet, Cue System Connector Wiring Sheet

ORDER INFORMATION

Product codes

CS0295.001

IR Sprayer incl. cable

CS0299.001

IR Sprayer Wall Mounting Adapter
incl. accessories

MAIN FEATURES

- Controls multiple IR controllable devices
- Amplifies and emits infrared control signal
- Power supply 5 VDC directly from controller
- Compact and small black plastic enclosure
- Wall Mounting Adapter available

DESCRIPTION

The IR Sprayer amplifies and emits infrared control signal from controller's IR / serial output. It allows control multiple IR controllable devices by single transmitting unit. The IR Sprayer is equipped with 2 m cable and two 2-pin connectors. White labeled connector serves for signal connection (IR / serial output on controller), red labeled connector is power supply and it can be connected to controller power output 5 VDC. In that case no additional power supply is required. The IR Sprayer can be simply fastened on the flat surface using a double-sided adhesive tape. For more flexible installation a Wall Mounting Adapter is available.

APPLICATIONS

- Commercial single-room applications
- Huge multi-room and multi-floor distributed systems
- Home theater applications
- Complete residential home automation

AVAILABLE ACCESSORIES

The IR Sprayer Wall Mounting Adapter allows flexible installation on the wall, ceiling, furniture, etc. and must be ordered separately using product code CS0299.001. The adapter is supplied incl. all necessary mounting accessories - screws, wall plugs, etc. The IR Sprayer is simply fastened to the adapter using a double-sided adhesive tape.



IR Sprayer installed on Wall Mounting Adapter



IR Sprayer Wall Mounting Adapter

Universal Serial Cable Adapter



SPECIFICATIONS

Connection

Controller's serial port, 5-pin 3.5 mm connector
Controlled device, DB -9-M connector

Physical

Black plastic enclosure

Dimensions

44 x 33 x 22 mm / 1.7" x 1.3" x 0.9"

Weight 0.2 kg / 0.4 lb

Operating environment

Temperature 10° to 40° C

Humidity 10% to 90% non-condensing

STANDARD BOX CONTENTS

Serial adapter

Cable to ipCUE (length 1 m)

Cable to controlled device (length 0.5 m)

DB-9-F to DB-9-M reduction

Warranty Conditions, CE Declaration, RoHS Declaration

Data Sheet, Cue System Connector Wiring Sheet

ORDER INFORMATION

Product code CS0271

MAIN FEATURES

- Allows simple change of serial cable pinout connection
- Perfect for serial connection testing and setup
- Small plastic enclosure
- Delivered with all necessary accessories

DESCRIPTION

The Universal Serial Cable Adapter allows to connect serial controlled device equipped with any signal configuration on DB-9-F or DB-9-M connector. Cable pinout connection can be simply changed by jumpers. It is perfect solution for serial cable checking and setup. After setup the universal adapter can be replaced by standard serial cable.



APPLICATIONS

- Commercial single-room applications
- Huge multi-room and multi-floor distributed systems
- Home theater applications
- Complete residential home automation

Receivers and Transmitters

cue

Wi-Fi Access Point WRT54GL



SPECIFICATIONS

Wireless communication

Standards IEEE 802.3, 802.3u, 802.11g, 802.11b
RF Power Output 18 dBm
11 channels (US, Canada), 13 channels (Europe, Japan)

Certifications

FCC, IC-03, CE, Wi-Fi (802.11b, 802.11g), WPA2, WMM

Security Features

Wireless Security Wi-Fi Protected Access™2 (WPA2)
WEP
Wireless MAC Filtering
Stateful Packet Inspection (SPI) Firewall, Internet Policy

Ports

Internet: 1x 10/100 RJ-45 Port, RJ-45 connector
LAN: 4x 10/100 RJ-45 Switched Ports, RJ-45 connector

LED indicators

Power, DMZ, WLAN, LAN (1-4), Internet, SecureEasySetup

Buttons

Reset, SecureEasySetup

Power supply

12 VDC, 6 W, power jack connector

Physical

Plastic enclosure
Dimensions
186 x 48 x 154 mm / 7.3" x 1.9" x 6.1"
Weight 0.4 kg / 0.9 lb

Operating environment

Temperature 10° to 40° C
Humidity 10% to 90% non-condensing

MAIN FEATURES

- All-in-one Internet-sharing Router, 4-port Switch, and 54Mbps Wireless-G (802.11g) Access Point
- Shares a single Internet connection and other resources with Ethernet wired and Wireless-G and -B devices
- Push button setup feature makes wireless configuration secure and simple
- High security: TKIP and AES encryption, wireless MAC address filtering, powerful SPI firewall

DESCRIPTION

The Wireless-G Broadband Router is really three devices in one box. First, there's the Wireless Access Point, which lets you connect both screaming fast Wireless-G (802.11g at 54Mbps) and Wireless-B (802.11b at 11Mbps) devices to the network. There's also a built-in 4-port full-duplex 10/100 Switch to connect your wired-Ethernet devices together. Connect four device directly, or attach more hubs and switches to create as big a network as you need. Finally, the Router function ties it all together and lets your whole network share a high-speed cable or DSL Internet connection.

The new push button setup feature makes it easy to configure your wireless devices. Just push the button on the router and on your other SecureEasySetup-enabled wireless device to automatically create an encryption-secured wireless connection. TKIP and AES protects your data and privacy with up to 128-bit industrial-strength encryption. The Router can serve as a DHCP Server, has a powerful SPI firewall to protect your PCs against intruders and most known Internet attacks, supports VPN pass-through, and can be configured to filter internal users' access to the Internet. Advanced configuration is a snap with the web browser-based interface.

ORDER INFORMATION

Product code CS0277

APPLICATIONS

- Commercial single-room applications
- Meeting rooms, conference rooms, boardrooms
- Complete residential home automation

STANDARD BOX CONTENTS

Wireless broadband router
Network cable
Power adapter
Compliance information
Setup Wizard & Documentation CD

Rx1 DIN /Data Receiver



SPECIFICATIONS

Wireless communication

Radio frequency 433.92 MHz
Number of codes 2²⁴

Wired communication

RS-232, DB-9-female connector

Power supply

230 VAC / 50 Hz, 4 W, terminals

Physical

Plastic enclosure

Protection IP20

Dimensions

53 x 90 x 58 mm / 2.1" x 3.5" x 2.3"

3 DIN modules 17.5 mm

Weight 0.25 kg / 0.6 lb

Operating environment

Temperature -10° to +55° C

Humidity 10% to 90% non-condensing

ORDER INFORMATION

Product code CS0318.401

STANDARD BOX CONTENTS

Rx1 DIN /Data Receiver

Serial cable for ipCUE connection

Warranty Conditions, CE Declaration, RoHS Declaration

Data Sheet

CUE Application CD

MAIN FEATURES

- Receiver for Tx Time, Tx Element and Tx Pocket transmitter
- Fully compatible with all ipCUE controllers
- RS-232 port for connection to ipCUE controllers
- Unified enclosure designed for DIN rail installation
- Easy installation
- Small dimensions

DESCRIPTION

The Rx1 DIN /Data is a receiver designed for mounting in switchboards, which are equipped with DIN rail. It is a complete receiver, which is equipped with inputs for antenna or for external receiver Rx Ext. The receiver can be connected to ipCUE controllers using **bi-directional** RS-232 communication port and standard driver.

APPLICATIONS

- Complete residential home automation
- Complete building automation
- Commercial single-room and multi-room applications
- Reconstructions and later installations

AVAILABLE ACCESSORIES

Rx Ext

The external receiver is used if the place of receiver's installation does not have sufficient receiving conditions. It is connected to the main receiver Rx1 DIN /Data through a two-wire cable max. 20 m. The case with the IP 33 cover enables also an outdoor installation.

Wireless communication

Radio frequency 433.92 MHz

Wired communication

Two-wire cable, max. 20 m

Physical

Plastic enclosure

Protection IP33

Weight 0.5 kg / 1.1 lb

Operating environment

Temperature -20° to +55° C

Humidity 10% to 90% non-condensing

Product code

CS0319.401





SPECIFICATIONS

Wireless communication

- Two-way
- Radio frequency 433 / 869 / 914 MHz
- Two whip antennas
- Omni directional receiving

Connection

- RS-232 for service, DB-9-female connector

LED indicators

- Power, Data

System communication

- CUEwire, 4-pin connector 5.08 mm

Power supply

- 24 VDC (+/-20%), 2 W, 2-pin connector 5.08 mm

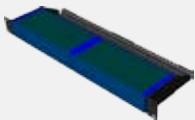
Physical

- Blue metal enclosure
- Dimensions
210 x 43.5 x 92 mm / 8.3" x 1.7" x 3.6"
- 1/2 rack space, 1 U
- Weight 0.9 kg / 2 lb

Operating environment

- Temperature 10° to 40° C
- Humidity 10% to 90% non-condensing

ipCUE RACK MOUNTING KIT



The ipCUE Rack Mounting Kit is an optional accessories for rfbaseCUE and it provides simple solution for installing rfbaseCUE to the 19" rack. It allows install two half-rack sized units. All necessary accessories are supplied with the kit.

- Stainless steel enclosure
- Dimensions Rack 19", 1 U
- Weight 1.3 kg / 2.9 lb
- Product code CS0251-MR

MAIN FEATURES

- RF communication 433 / 869 / 914 MHz
- Two-way wireless communication
- CUEwire system communication
- Fully compatible with all ipCUE controllers
- Blue metal enclosure
- Available accessories: ipCUE Rack Mounting Kit

DESCRIPTION

The rfbaseCUE is a device that links RF wireless control panels (rfCUE and touchCUE-SRF) to CUEwire. The transceiver uses two fixed antennas.

APPLICATIONS

- Commercial single-room applications
- Meeting rooms, conference rooms, boardrooms
- Complete residential home automation

ORDER INFORMATION

Product codes

CS0171-4	433 MHz
CS0171-8	869 MHz
CS0171-9	914 MHz

STANDARD BOX CONTENTS

rfbaseCUE
CUEwire Cable
Warranty Conditions, CE Declaration, RoHS Declaration
Data Sheet, Cue System Connector Wiring Sheet
CUE Application CD

irCUE Receiver 485



SPECIFICATIONS

Wireless communication

- One-way, IR receiving
- Receiving in horizontal plane 0° - 360°
- Receiving in vertical plane 60°

Address settings

- DIP switch

System communication

- CUEwire, 4-pin connector 5.08 mm

Power supply

- 24 VDC (+/-20%), 1 W, 2-pin connector 5.08 mm

Physical

- Metal enclosure, plastic cover

Dimensions

- Diameter 81 mm / 3.2"
- Height 104 mm / 4.1"
- Weight 0.1 kg / 0.2 lb

Operating environment

- Temperature 10° to 40° C
- Humidity 10% to 90% non-condensing

MAIN FEATURES

- IR communication
- Compatible with irCUE 99 and SONY remotes up to 12-bit codes
- Receiving in horizontal plane 0° - 360°
- CUEwire system communication
- Fully compatible with all ipCUE controllers
- Metal enclosure with plastic cover
- Ceiling mounting

DESCRIPTION

The irCUE Receiver 485 links IR wireless control panels to the CUEwire. It is an infrared receiving unit designed for ceiling mounting (similar to halogen lamps mounting). Using multiple IR receivers within the unit, the irCUE Receiver 485 provides signal receiving in a horizontal plane from all directions.

APPLICATIONS

- Commercial single-room applications
- Meeting rooms, conference rooms, boardrooms
- Museum
- Complete residential home automation

ORDER INFORMATION

Product code CS0169-C

STANDARD BOX CONTENTS

irCUE Receiver 485
Warranty Conditions, CE Declaration, RoHS Declaration
Data Sheet, Cue System Connector Wiring Sheet
CUE Application CD

Interfaces

cue



SPECIFICATIONS

Inputs

- 4x Stereo unbalanced line input, 2 RCA jack connectors
- 1x Mono microphone input, jack 6.3 mm connector

Outputs

- 2x Stereo unbalanced line output, two connectors in parallel for each output, 4 RCA jack connectors

Audio control

- Volume control -68 to +10 dB
- Gain control 0 to -38 dB
- Bass control -15 to +15 dB
- Treble control -15 to +15 dB
- Signal to noise ratio greater than 80 dB
- Total harmonic distortion less than 0.03%

LED indicators

- Power, Data O.K., selected inputs

Buttons and switches

- Test, Reset
- Address switch

System communication

- 1x CUE ring input, DB -9-female connector
- 1x CUE ring output, DB -9-male connector

Power supply

- 24 VDC (+/-20%), 3.5 W, power jack connector

Physical

- Stainless steel enclosure
- Dimensions 242 x 44 x 160 mm / 9.5" x 1.7" x 6.3"
- Weight 1.1 kg / 2.4 lb

Operating environment

- Temperature 10° to 40° C
- Humidity 10% to 90% non-condensing

MAIN FEATURES

- Four stereo line inputs
- One microphone input
- Two independent stereo outputs
- Fully compatible with ipCUE controllers
- Front panel indicators for each output
- 19" rack installation available with accessories

DESCRIPTION

The soundCUE is a five-input / two-output audio matrix switcher capable of switching four stereo unbalanced line inputs and one mono microphone input to two independently switched outputs. Each matrix output is composed of two parallel stereo unbalanced line outputs. The soundCUE enables control of volume, bass and treble independently for each matrix output. The status of the soundCUE is indicated on the front panel.

APPLICATIONS

- Commercial single-room applications
- Home theater applications

ORDER INFORMATION

Product code CS0009

STANDARD BOX CONTENTS

soundCUE
Rack mount interface kit 19"
CUEadapter /30W incl. power cable
Warranty Conditions, CE Declaration, RoHS Declaration
Data Sheet, Cue System Connector Wiring Sheet
CUE Application CD

CUERING Cable /i



The CUERING Cable /i is a data cable that enables communication between controllers and interfaces.

Connectors

5-pin 3.5 mm, DB-9-male

Product codes

CA0170-P05 length 0.5 m / 1.6 ft

CA0170-P30 length 3.0 m / 9.8 ft

CA0170-PU user cable length

Control Cable 9-pin



Control Cable 9-pin is an RS-232 data cable used for communication between two interfaces.

Connectors

DB-9-male, DB-9-female

Product codes

CA0060-P05 length 0.5 m / 1.6 ft

CA0060-P30 length 3.0 m / 9.8 ft

CA0060-PU user cable length

O-ring Cable



The O-ring Cable optically isolates the CUERING between two units. It can only be connected to soundCUE and is only capable of one-way communication. All remaining control commands are not affected.

Connectors

DB-9-male, DB-9-female

Product code

CS0106

Inputs and Sensors

cue

sensorCUE-W



SPECIFICATIONS

- Temperature measurement
Range -20°C to +50°C
- Daylight sensing
May be calibrated for day / night light level recognition
- System communication
CUEwire
- Power supply
24 VDC (+/- 20%), 1 W
- Physical
Plastic enclosure
Dimensions 83 x 81 x 16 mm / 3.3" x 3.2" x 0.6"
Weight 0.1 kg / 0.2 lb
- Operating environment
Temperature -20° to 50° C
Humidity 10% to 90% non-condensing

MAIN FEATURES

- Temperature and lighting sensor for indoor installation
- Temperature measurement range -20°C to +50°C
- CUEwire system communication
- Fully compatible with ipCUE controllers
- Plastic enclosure
- Compatible with Time and Element design series of ABB switches
- Compatible with standard electrical European wall box

DESCRIPTION

The sensorCUE-W is temperature and daylight sensor in one small plastic enclosure, compatible with standard European electrical wall box. Temperature sensor can be used for temperature monitoring and for heating control. Daylight sensor allows controller to automatically dim lights when available daylight is high and brighten lights when daylight is low in order to maintain a specific light level in the space. It may be calibrated for daylight sensitivity by programming of the controller. The unit is fully compatible with CUE controllers and connection is provided via standard CUEwire system bus.

APPLICATIONS

- Complete building automation
- Complete residential home automation
- High-tech homes

STANDARD BOX CONTENTS

sensorCUE
CUEwire connectors
Warranty Conditions, CE Declaration, RoHS Declaration
Data Sheet, Cue System Connector Wiring Sheet
CUE Application CD

TIME DESIGN ORDER INFORMATION

Product code	Color	
CS0289.101	White / Ice White	
CS0289.102	White / Ice Green	
CS0289.103	White / White	
CS0289.108	Titan	
CS0289.131	Arctic Blue	
CS0289.132	Silver	
CS0289.133	Champagne	
CS0289.134	Anthracite	

ELEMENT DESIGN ORDER INFORMATION

Product code	Color	
CS0289.201	White / Ice White	
CS0289.203	White / White	
CS0289.204	White / Ice Grey	
CS0289.207	Caramel / Ice Grey	
CS0289.221	Ivory / Ice White	
CS0289.222	Agave / Ice White	
CS0289.223	Stormy / Ice grey	
CS0289.224	Carmine / Ice grey	



SPECIFICATIONS

Temperature measurement

Range -55°C to +125°C

Daylight sensing

May be calibrated for day / night light level recognition

System communication

CUEwire

Power supply

24 VDC (+/- 20%), 1 W

Physical

Metal enclosure

Protection IP43

Dimensions 80 x 30 x 15 mm / 3.2" x 1.2" x 0.6"

Weight 0.2 kg / 0.4 lb

Operating environment

Temperature -40° to 70° C

Humidity 10% to 90% non-condensing

MAIN FEATURES

- Temperature measurement range -55°C to +125°C
- Integrated daylight sensor
- CUEwire system communication
- Fully compatible with ipCUE controllers
- Metal enclosure
- Small dimensions
- Easy installation

DESCRIPTION

The sensorCUE is temperature and daylight sensor in one small enclosure. Temperature sensor can be used for temperature monitoring and for heating control. Daylight sensor allows controller to automatically dim lights when available daylight is high and brighten lights when daylight is low in order to maintain a specific light level in the space. It may be calibrated for daylight sensitivity by programming of the controller. The unit is fully compatible with CUE controllers and connection is provided via standard CUEwire system bus.

APPLICATIONS

- Complete building automation
- Complete residential home automation
- High-tech homes

ORDER INFORMATION

Product code CS0265

STANDARD BOX CONTENTS

sensorCUE

CUEwire connector

Warranty Conditions, CE Declaration, RoHS Declaration

Data Sheet, Cue System Connector Wiring Sheet

CUE Application CD



SPECIFICATIONS

Inputs

8x Potential free contact input

LED indicators

CUEwire activity

Address setting

DIP switch

System communication

CUEwire, 4-pin connector 5.08 mm

Power supply

24 VDC (+/- 20%), 2 W, 2-pin connector 5.08 mm

Physical

Plastic DIN rail compatible enclosure

Dimensions 53 x 90 x 58 mm / 2.1" x 3.5" x 2.3"

Weight 0.3 kg / 0.7 lb

Operating environment

Temperature 10° to 40° C

Humidity 10% to 90% non-condensing

MAIN FEATURES

- Eight potential free contact inputs
- CUEwire system communication
- Unified enclosure designed for DIN rail installation
- Easy installation
- Small dimensions

DESCRIPTION

The inputCUE connects up to eight contacts to a control system. Addressing of the unit is set by DIP switch and CUEwire activity is indicated on the front panel. The enclosure allows simple installation on a DIN rail.

APPLICATIONS

- Commercial single-room applications
- Meeting rooms, conference rooms, boardrooms
- Huge multi-room and multi-floor distributed systems
- Complete residential home automation
- High-tech homes

ORDER INFORMATION

Product code CS0191

STANDARD BOX CONTENTS

inputCUE

Connector set

CUEwire cable

Warranty Conditions, CE Declaration, RoHS Declaration

Data Sheet, Cue System Connector Wiring Sheet

CUE Application CD

Serial Bus Converters

cue



SPECIFICATIONS

Serial ports

- 1x RS-232, DB-9-female connector and terminals
- 2x RS-485 PEbus, RJ-11 connector
- Baud rate 19 200 bits/s

LED indicators

- Transmission direction

Power supply

- 7.5 - 24 VDC, 3 W, from PEbus or external power supply

Physical

- Plastic DIN rail compatible enclosure
- Dimensions
 - 36 x 90 x 58 mm / 1.4" x 3.5" x 2.3"
 - 2 DIN modules 17.5 mm
- Weight 0.1 kg / 0.2 lb

Operating environment

- Temperature 0° to 60° C
- Humidity 10% to 90% non-condensing

MAIN FEATURES

- Data converter from RS-232 to RS-485 PEbus
- Automatic half duplex
- Indication of transmission direction
- Power supply from Power Express units
- Unified enclosure designed for DIN rail installation
- Easy installation
- Small dimensions

DESCRIPTION

The PEC25 converts CUering (RS-232) and PEbus (RS-485, two twisted-pair cables). The direction of the transmission is indicated on the front panel. System setup can be directly performed from a standard PC through the computer serial port. The enclosure allows simple installation on a DIN rail.

APPLICATIONS

- Commercial single-room applications
- Meeting rooms, conference rooms, boardrooms
- Commercial huge multi-room and multi-floor distributed systems
- Complete residential home automation
- High-tech homes

ORDER INFORMATION

Product code CS0163

STANDARD BOX CONTENTS

PEC25
PEbus cable
Warranty Conditions, CE Declaration, RoHS Declaration
CUE Application CD



SPECIFICATIONS

Control ports

DMX512 input, full range of 512 channels, terminals
DMX512 output, full range of 512 channels, terminals

Communication

RS-232, terminals

LED indicator

DMX activity

Power supply

24 VDC (+/-20%), 5 W, terminals

Physical

Plastic DIN rail compatible enclosure

Dimensions

53 x 90 x 58 mm / 2.1" x 3.5" x 2.3"
3 DIN modules 17.5 mm

Weight 0.3 kg / 0.7 lb

Operating environment

Temperature 10° to 40° C

Humidity 10% to 90% non-condensing

MAIN FEATURES

- DMX512 separate input and output
- RS-232 communication port
- Front panel indicator
- Unified enclosure designed for DIN rail installation

DESCRIPTION

The sbiCUE-DMX is a universal interface of DMX512 bus with a separate input and output of the mentioned bus. The unit enables a reception, transmission and a merge of the full range of 512 channels. A serial channel carries out the connection to a control unit. The front panel includes LED indicator for DMX output activity. The enclosure allows for simple installation on a DIN rail.

APPLICATIONS

- Commercial single-room applications
- Huge multi-room and multi-floor distributed systems
- Theatre
- Show control
- Multifunctional spaces

ORDER INFORMATION

Product code CS0201

STANDARD BOX CONTENTS

sbiCUE-DMX
Serial cable
Warranty Conditions, CE Declaration, RoHS Declaration
Data Sheet
CUE Application CD

Analog Outputs

cue



SPECIFICATIONS

Control ports

- 4x Potential free contact input, terminals 1.5 mm²
- 2x Analog output 0 – 10 V, terminals 1.5 mm²
 - 10 bits resolution
 - Max. 100 mA sink
 - Max. 15 mA source
- 2x Relay 230 V, max. 8 A, terminals 1.5 mm²

System communication

- 2x PEbus, RJ-11 connector

LED indicators

- Power / PEbus activity
- Level of both outputs

Power supply

- 110 or 230 VAC, 50 / 60 Hz, 12 W

Physical

- Plastic DIN rail compatible enclosure
- Dimensions
 - 71 x 90 x 58 mm / 2.8" x 3.5" x 2.3"
 - 4 DIN modules 17.5 mm
- Weight 0.3 kg / 0.7 lb

Operating environment

- Temperature 0° to 60° C
- Humidity 10% to 90% non-condensing

MAIN FEATURES

- Two independent analog outputs 0 - 10 V
- 10 bits resolution
- Possibility to control devices with interface 0-10V (ballast for fluorescent lamps, dimmers, frequency converters, etc.)
- Two switching outputs for power supply of ballasts
- Control by bus PEbus and external buttons
- Test buttons on front panel
- Programmable parameters
- Indication of power supply, PEbus activity and output level
- Unified enclosure designed for DIN rail installation
- Easy installation
- Small dimensions

DESCRIPTION

PEA208 is a two-channel analog output interface. Each independent 0 - 10 V analog output enables control of VCA, light dimmer, hydraulic or pneumatic valve type devices. The unit can be controlled by PEbus and by potential free contact inputs. The programmable parameters are input response, minimum and maximum output voltage, dimming speed and output characteristic. If the analog output value is greater than 1 V then the relay turns on automatically. The front panel includes LED indicator for each output. The enclosure allows simple installation on a DIN rail.

APPLICATIONS

- Commercial single-room applications
- Meeting rooms, conference rooms, boardrooms
- Huge multi-room and multi-floor distributed systems
- Complete residential home automation
- High-tech homes

ORDER INFORMATION

Product codes

CS0225-1	version 110 VAC
CS0225-2	version 230 VAC

STANDARD BOX CONTENTS

PEA208
PEbus cable
Warranty Conditions, CE Declaration, RoHS Declaration
Data Sheet, Cue System Connector Wiring Sheet
CUE Application CD

Dimmers

cue



SPECIFICATIONS

Control ports

- 2x Potential free contact input, terminals 1.5 mm²
- 1x Regulated output, 230 / 110 VAC, terminals 1.5 mm²
 - Max. load 8 A
 - Load type resistive and inductive
 - Leading-edge phase control
 - Over-current protection by quick-brake fuse

System communication

- 2x PEbus, RJ-11 connector

LED indicators

- Power / PEbus activity
- Output level
- Max. temperature overload and over-current fuse

Power supply

- 110 or 230 VAC, 50 / 60 Hz, 8 A

Physical

- Plastic DIN rail compatible enclosure
- Dimensions
 - 106 x 90 x 58 mm / 4.2" x 3.5" x 2.3"
 - 6 DIN modules 17.5 mm
- Weight 0.8 kg / 1.8 lb

Operating environment

- Temperature 0° to 40° C
- Humidity 10% to 90% non-condensing

MAIN FEATURES

- One-channel dimmer for resistive and inductive loads
- Load up to 8 A
- Control by bus PEbus and external buttons
- Test buttons on front panel
- Programmable parameters
- Indication of power supply, PEbus activity, output level, max. temperature overload and over-current fuse
- Unified enclosure designed for DIN rail installation
- Easy installation
- Small dimensions

DESCRIPTION

The PED108 is a one-channel dimmer for resistive and inductive loads up to 8 A. The unit can be controlled by PEbus and by potential free contact inputs. The programmable parameters are input response, minimum and maximum output voltage, dimming speed and output characteristic. The front panel includes LED indicators for output level, maximum temperature overload and over-current fuse. The enclosure allows simple installation on a DIN rail.

APPLICATIONS

- Commercial single-room applications
- Meeting rooms, conference rooms, boardrooms
- Huge multi-room and multi-floor distributed systems
- Complete residential home automation
- High-tech homes

ORDER INFORMATION

Product codes

CS0164-1	version 110 VAC
CS0164-2	version 230 VAC

STANDARD BOX CONTENTS

PED108
PEbus cable
Warranty Conditions, CE Declaration, RoHS Declaration
Data Sheet, Cue System Connector Wiring Sheet
CUE Application CD



SPECIFICATIONS

Control ports

- 4x Potential free contact input, terminals 1.5 mm²
- 2x Regulated output, 230 / 110 VAC, terminals 1.5 mm²
 - Max. load 2.7 A per channel, **max. 4 A total**
 - Load type resistive and inductive
 - Leading-edge phase control
 - Over-current protection by quick-brake fuse

System communication

- 2x PEbus, RJ-11 connector

LED indicators

- Power / PEbus activity
- Level of both outputs
- Max. temperature overload and over-current fuse

Power supply

- 110 or 230 VAC, 50 / 60 Hz, 4 A

Physical

- Plastic DIN rail compatible enclosure
- Dimensions
 - 106 x 90 x 58 mm / 4.2" x 3.5" x 2.3"
 - 6 DIN modules 17.5 mm
- Weight 0.5 kg / 1.1 lb

Operating environment

- Temperature 0° to 40° C
- Humidity 10% to 90% non-condensing

MAIN FEATURES

- Two-channel dimmer for resistive and inductive loads
- Load up to 2.7 A per channel, **max. 4 A total**
- Control by bus PEbus and external buttons
- Test buttons on front panel
- Programmable parameters
- Indication of power supply, PEbus activity, level of both outputs, max. temperature overload and over-current fuse
- Unified enclosure designed for DIN rail installation
- Easy installation
- Small dimensions

DESCRIPTION

The PED202 is a two-channel dimmer for resistive and inductive loads up to 2.7 A per channel, **max. 4 A total**. The unit can be controlled by PEbus and by potential free contact inputs. The programmable parameters are input response, minimum and maximum output voltage, dimming speed and output characteristic. The front panel includes LED indicators for output level, maximum temperature overload and over-current fuse. The enclosure allows simple installation on a DIN rail.

APPLICATIONS

- Commercial single-room applications
- Meeting rooms, conference rooms, boardrooms
- Huge multi-room and multi-floor distributed systems
- Complete residential home automation
- High-tech homes

ORDER INFORMATION

Product codes

CS0165-1	version 110 VAC
CS0165-2	version 230 VAC

STANDARD BOX CONTENTS

PED202
PEbus cable
Warranty Conditions, CE Declaration, RoHS Declaration
Data Sheet, Cue System Connector Wiring Sheet
CUE Application CD



SPECIFICATIONS

Control ports

- 2x Potential free contact input, terminals 1.5 mm²
- 1x Regulated output, 230 / 110 VAC, terminals 1.5 mm²
 - Max. load 2 A
 - Load type resistive and capacitive
 - Trailing - edge phase control
 - Over-current protection by electronic fuse

System communication

- 2x PEbus, RJ-11 connector

LED indicators

- Power / PEbus activity
- Output level
- Max. temperature overload and over-current fuse

Power supply

- 110 or 230 VAC, 50 / 60 Hz, 2 A

Physical

- Plastic DIN rail compatible enclosure
- Dimensions
 - 53 x 90 x 58 mm / 2.1" x 3.5" x 2.3"
 - 6 DIN modules 17.5 mm
- Weight 0.5 kg / 1.1 lb

Operating environment

- Temperature 0° to 40° C
- Humidity 10% to 90% non-condensing

MAIN FEATURES

- One-channel dimmer for resistive and capacitive loads
- Suitable for dimming of electronic transformers
- Load up to 2 A
- Control by bus PEbus and external buttons
- Test buttons on front panel
- Programmable parameters
- Indication of power supply, PEbus activity, output level, max. temperature overload and over-current fuse
- Unified enclosure designed for DIN rail installation
- Easy installation
- Small dimensions

DESCRIPTION

The PET102 is a one-channel dimmer for resistive and capacitive loads up to 2 A suitable for dimming of electronic transformers. The unit can be controlled by PEbus and by potential free contact inputs. The programmable parameters are input response, minimum and maximum output voltage, dimming speed and output characteristic. The front panel includes LED indicators for output level, maximum temperature overload and over-current fuse. The enclosure allows simple installation on a DIN rail.

APPLICATIONS

- Commercial single-room applications
- Meeting rooms, conference rooms, boardrooms
- Huge multi-room and multi-floor distributed systems
- Complete residential home automation
- High-tech homes

ORDER INFORMATION

Product codes

CS0244-1	version 110 VAC
CS0244-2	version 230 VAC

STANDARD BOX CONTENTS

PET102

PEbus cable

Warranty Conditions, CE Declaration, RoHS Declaration

Data Sheet, Cue System Connector Wiring Sheet

CUE Application CD



SPECIFICATIONS

Control ports

- 2x Potential free contact input, terminals 1.5 mm²
- 1x Regulated output, 230 / 110 VAC, terminals 1.5 mm²
 - Max. load 5 A
 - Load type resistive and capacitive
 - Trailing - edge phase control
 - Over-current protection by electronic fuse

System communication

- 2x PEbus, RJ-11 connector

LED indicators

- Power / PEbus activity
- Output level
- Max. temperature overload and over-current fuse

Power supply

- 110 or 230 VAC, 50 / 60 Hz, 5 A

Physical

- Plastic DIN rail compatible enclosure
- Dimensions
 - 106 x 90 x 58 mm / 4.2" x 3.5" x 2.3"
 - 6 DIN modules 17.5 mm
- Weight 0.8 kg / 1.8 lb

Operating environment

- Temperature 0° to 40° C
- Humidity 10% to 90% non-condensing

MAIN FEATURES

- One-channel dimmer for resistive and capacitive loads
- Suitable for dimming of electronic transformers
- Load up to 5 A
- Control by bus PEbus and external buttons
- Test buttons on front panel
- Programmable parameters
- Indication of power supply, PEbus activity, output level, max. temperature overload and over-current fuse
- Unified enclosure designed for DIN rail installation
- Easy installation
- Small dimensions

DESCRIPTION

The PET105 is a one-channel dimmer for resistive and capacitive loads up to 5 A suitable for dimming of electronic transformers. The unit can be controlled by PEbus and by potential free contact inputs. The programmable parameters are input response, minimum and maximum output voltage, dimming speed and output characteristic. The front panel includes LED indicators for output level, maximum temperature overload and over-current fuse. The enclosure allows simple installation on a DIN rail.

APPLICATIONS

- Commercial single-room applications
- Meeting rooms, conference rooms, boardrooms
- Huge multi-room and multi-floor distributed systems
- Complete residential home automation
- High-tech homes

ORDER INFORMATION

Product codes

CS0245-1	version 110 VAC
CS0245-2	version 230 VAC

STANDARD BOX CONTENTS

PET105

PEbus cable

Warranty Conditions, CE Declaration, RoHS Declaration

Data Sheet, Cue System Connector Wiring Sheet

CUE Application CD

Interfaces for Dimming Ballasts

cue

PEF150



SPECIFICATIONS

Control ports

- 4x Potential free contact input, terminals 1.5 mm²
- 1x DALI up to 64 dimming ballasts, terminals 1.5 mm²
- Control up to 15 independent groups

System communication

- 2x PEbus, RJ-11 connector

LED indicators

- Power / PEbus activity
- Two groups output levels
- DALI communication activity

Power supply

- 110 or 230 VAC, 50 / 60 Hz, 12 W

Physical

- Plastic DIN rail compatible enclosure
- Dimensions
71 x 90 x 58 mm / 2.8" x 3.5" x 2.3"
4 DIN modules 17.5 mm
- Weight 0.3 kg / 0.7 lb

Operating environment

- Temperature 0° to 60° C
- Humidity 10% to 90% non-condensing

ORDER INFORMATION

Product codes

- | | |
|----------|-----------------|
| CS0249-1 | version 110 VAC |
| CS0249-2 | version 230 VAC |

STANDARD BOX CONTENTS

- PEF150
- PEbus cable
- Warranty Conditions, CE Declaration, RoHS Declaration
- Data Sheet, Cue System Connector Wiring Sheet
- CUE Application CD

MAIN FEATURES

- Compatible with ballasts DALI
- Possibility to control up to 64 dimmable ballasts for fluorescent lamps divided up to 15 independent groups
- Possibility to control of all 15 groups by PEbus
- Possibility to control two groups or possibility to recall four light scenes by external buttons
- Test buttons on front panel
- Programmable parameters
- Indication of power supply, PEbus activity, output level and DALI communication activity
- DALI bus can be powered from PEF150, programmable by PEX software
- Unified enclosure designed for DIN rail installation
- Easy installation
- Small dimensions

DESCRIPTION

The PEF150 is exclusively designed interface for fluorescent lamp dimming ballasts with DALI (Digital Addressable Lighting Interface) protocol. This protocol offers the possibility to individually address up to 64 regulating ballasts on a single bus and up to 15 independent groups. The control of all groups is performed by PEbus. PEF150 is compatible with DALI ballasts produced by major manufacturers such as Philips, Osram, Triondic, Helvar, etc. The unit can be controlled by PEbus and by potential free contact inputs. Potential free contact inputs offer a control of two groups by external buttons or recall four different scenes. The same function is possible with test buttons located on the front panel. The programmable parameters are input response, minimum and maximum output level of light and dimming speed, light scenes. One of the advantages is that there is no need to connect dimming ballasts into groups since all of them are connected by a twin-core cable and later with the software configuration is determined in which group the luminary will belong to. This means that the light configuration can be easily changed after a room light modification. The light configuration is performed by PEX program. As far as the bus control is concerned each group is assigned an address as to other units and then the group follows standard CUE commands for light. The front panel includes LED indicators for the power supply and output level. The enclosure allows simple installation on a DIN rail.

APPLICATIONS

- Commercial single-room applications
- Meeting rooms, conference rooms, boardrooms
- Huge multi-room and multi-floor distributed systems
- Complete residential home automation
- High-tech homes



SPECIFICATIONS

Control ports

- 4x Potential free contact input, terminals 1.5 mm²
- 2x DSI ports
 - Each up to 50 electronic ballasts
 - Terminals 1.5 mm²

System communication

- 2x PEbus, RJ-11 connector

LED indicators

- Power / PEbus activity
- Level of both outputs

Power supply

- 110 or 230 VAC, 50 / 60 Hz, 12 W

Physical

- Plastic DIN rail compatible enclosure
- Dimensions
 - 71 x 90 x 58 mm / 2.8" x 3.5" x 2.3"
 - 4 DIN modules 17.5 mm
- Weight 0.3 kg / 0.7 lb

Operating environment

- Temperature 0° to 60° C
- Humidity 10% to 90% non-condensing

ORDER INFORMATION

Product codes

- | | |
|----------|-----------------|
| CS0166-1 | version 110 VAC |
| CS0166-2 | version 230 VAC |

STANDARD BOX CONTENTS

- PEF200
- PEbus cable
- Warranty Conditions, CE Declaration, RoHS Declaration
- Data Sheet, Cue System Connector Wiring Sheet
- CUE Application CD

MAIN FEATURES

- Compatible with ballasts DSI
- Two independent outputs for control of dimming ballasts for fluorescent lamps or lamps with DSI compatible dimmer
- Control by PEbus and external buttons
- Test buttons on front panel
- Programmable parameters
- Indication of power supply, PEbus activity, level of both outputs
- Unified enclosure designed for DIN rail installation
- Easy installation
- Small dimensions

DESCRIPTION

The PEF 200 is a two-channel interface for fluorescent lamp dimming ballasts controlled by DSI. The unit can be controlled by PEbus and by potential free contact inputs. The programmable parameters are input response, minimum and maximum output voltage and scan speed. The front panel includes LED indicators for power / PEbus activity and level of both outputs. The enclosure allows simple installation on a DIN rail.

APPLICATIONS

- Commercial single-room applications
- Meeting rooms, conference rooms, boardrooms
- Huge multi-room and multi-floor distributed systems
- Complete residential home automation
- High-tech homes

Power Switching Units

cue

PER610



SPECIFICATIONS

Control ports

- 6x Potential free contact input, terminals 1.5 mm²
- 6x Potential free relay
- 230 or 110 V, 10 A
- Terminals 1.5 mm²

System communication

- 2x PEbus, RJ-11 connector

LED indicators

- Power / PEbus activity
- Status of all relays

Power supply

- 110 or 230 VAC, 50 / 60 Hz, 12 W

Physical

- Plastic DIN rail compatible enclosure
- Dimensions
- 106 x 90 x 58 mm / 4.2" x 3.5" x 2.3"
- 6 DIN modules 17.5 mm
- Weight 0.5 kg / 1.1 lb

Operating environment

- Temperature 0° to 60° C
- Humidity 10% to 90% non-condensing

ORDER INFORMATION

Product codes

- | | |
|----------|-----------------|
| CS0167-1 | version 110 VAC |
| CS0167-2 | version 230 VAC |

STANDARD BOX CONTENTS

- PER610
- PEbus cable
- Warranty Conditions, CE Declaration, RoHS Declaration
- Data Sheet, Cue System Connector Wiring Sheet
- CUE Application CD

MAIN FEATURES

- Relay unit for loads up to 10 A
- Six independent potential free switching outputs
- Control by PEbus and external buttons
- Test buttons on front panel
- Programmable parameters for each relay
- Indication of power / PEbus activity and status of all relays
- Unified enclosure designed for DIN rail installation
- Easy installation
- Small dimensions
- Available accessories: suppressor unit PES03

DESCRIPTION

The PER610 is a six-channel relay switching unit for loads up to 10 A per channel. The unit can be controlled by PEbus and by potential free contact inputs. The programmable parameters are response on the input, delayed on / off, memory and motor control sequence. The front panel includes LED indicators for power supply / PEbus activity and status of all relays. The enclosure allows simple installation on a DIN rail.

APPLICATIONS

- Commercial single-room applications
- Meeting rooms, conference rooms, boardrooms
- Huge multi-room and multi-floor distributed systems
- Complete residential home automation
- High-tech homes

PES03

The PES 03 is a three-channel suppressor unit for switching channels. The enclosure allows simple installation on a DIN rail.



Maximum voltage 275 VAC

Max. load current 10 Amps

Connection terminals up to 1.5 mm²

Physical

- Plastic enclosure
- Dimensions
- 36 x 90 x 58 mm / 1.4" x 3.5" x 2.3"
- 2 DIN modules 17.5 mm
- Weight 0.1 kg / 0.2 lb

Operating environment

- Temperature 0° to 60° C
- Humidity 10% to 90% non-condensing

Product code CS0168



SPECIFICATIONS

Control ports

- 8x Potential free contact input, 2-pin 3.5 mm connector
- 8x Potential free relay
- 230 V, 16 A
- Terminals 2.5 mm²

LED indicators

- Power
- Status of all relays

Power supply

- 230 VAC, 50 Hz, 10 W

Physical

- Plastic DIN rail compatible enclosure
- Dimensions
- 158 x 90 x 58 mm / 6.2" x 3.5" x 2.3"
- 9 DIN modules 17.5 mm
- Weight 0.5 kg / 1.1 lb

Operating environment

- Temperature 0° to 60° C
- Humidity 10% to 90% non-condensing

ORDER INFORMATION

Product code CS0016

STANDARD BOX CONTENTS

- powerAUX
- Connector set
- Warranty Conditions, CE Declaration, RoHS Declaration
- Data Sheet, Cue System Connector Wiring Sheet
- CUE Application CD

MAIN FEATURES

- Relay unit for loads up to 16 A per relay
- Eight independent potential free switching outputs
- Controlled by general IOs or relays of ipCUE controller
- Unified enclosure designed for DIN rail installation
- Easy installation
- Available accessories: suppressor unit PES03

DESCRIPTION

The powerAUX is an eight-channel relay switching unit, 16 A per relay. It may be connected to the controller's digital or relay outputs. The front panel includes LED indicators for power supply and relay status. Enclosure allows simple installation on a DIN rail.

APPLICATIONS

- Commercial single-room applications
- Meeting rooms, conference rooms, boardrooms
- Huge multi-room and multi-floor distributed systems
- Complete residential home automation
- High-tech homes

PES03

The PES 03 is a three-channel suppressor unit for switching channels. The enclosure allows simple installation on a DIN rail.



Maximum voltage 275 VAC

Max. load current 10 Amps

Connection terminals up to 1.5 mm²

Physical

- Plastic enclosure
- Dimensions
- 36 x 90 x 58 mm / 1.4" x 3.5" x 2.3"
- 2 DIN modules 17.5 mm
- Weight 0.1 kg / 0.2 lb

Operating environment

- Temperature 0° to 60° C
- Humidity 10% to 90% non-condensing

Product code CS0168

Power Supplies and PoE

cue

CUEadapter /30W



DESCRIPTION

The CUEadapter /30W is AC/DC switching mode power supplies which provides 30 W of continuous output power. This power supply is UL 94V-1 min compliant include IEC-320-C14 input for worldwide applications and it meets FCC Part-15 class B and CISPR-22 class B emission Limits and are designed to comply with UL/c-UL(UL 60950-1), TUV/GS(EN 60950) and new CE requirements. The unit is 100% burned-in and tested.

SPECIFICATIONS

Power supply

Universal range type
Input Voltage 90 to 264 VAC
Input Frequency 47 to 63 Hz
Input Current 1.6 A RMS

Output

24 VDC, 30 W

Protection

Short, Over voltage, Over current

Safety approvals

cUL, TUV, CB, CE

Physical

Plastic enclosure
Dimensions 87 x 48 x 32 mm / 3.4" x 1.9" x 1.3"
Weight 0.2 kg / 0.4 lb

Operating environment

Temperature 0° to 40° C
Humidity 10% to 90% non-condensing

ORDER INFORMATION

Product code

CS0292-001 European version
CS0292-002 UK version
CS0292-003 US version

CUEadapter /65W



DESCRIPTION

The CUEadapter /65W is AC/DC switching mode power supplies which provides 65 W of continuous output power. This power supply is UL 94V-1 min compliant include IEC-320-C14 input for worldwide applications and it meets FCC Part-15 class B and CISPR-22 class B emission Limits and are designed to comply with UL/c-UL(UL 60950-1), TUV/GS(EN 60950) and new CE requirements. The unit is 100% burned-in and tested.

SPECIFICATIONS

Power supply

Universal range type
Input Voltage 90 to 264 VAC
Input Frequency 47 to 63 Hz
Input Current 2.0 A RMS

Output

24 VDC, 65 W

Protection

Short, Over voltage, Over current

Safety approvals

cUL, TUV-PS/GS, CB, CE, PSE/JQA, VCCI

Physical

Plastic enclosure
Dimensions 114 x 54 x 34 mm / 4.5" x 2.1" x 1.3"
Weight 0.3 kg / 0.7 lb

Operating environment

Temperature 0° to 40° C
Humidity 10% to 90% non-condensing

ORDER INFORMATION

Product code

CS0293-001 European version
CS0293-002 UK version
CS0293-003 US version

PoE Adapter PSA16U



SPECIFICATIONS

Power supply

- Universal range type
- Input Voltage 90 to 264 VAC
- Input Frequency 47 to 63 Hz
- Input Current
 - 0.5 A RMS max. for 90 VAC
 - 0.35 A RMS max. for 240 VAC
- Input connector IEC320 inlet 3-pin

Output

- DC output voltage 48 V
- Total output power 15.4 W

Protection

- Over voltage (OVP)
- Over current (OVC)
- Short circuit

Safety approvals

- cUL/UL, TUV, CE, FCC, CCC

Physical

- Plastic enclosure
- Dimensions 140 x 65 x 36 mm / 5.5" x 2.6" x 1.4"
- Weight 0.2 kg / 0.4 lb

Operating environment

- Temperature 0° to 40° C
- Humidity 10% to 90% non-condensing

POWER OVER ETHERNET

Power over Ethernet (PoE), sometimes also called Active Ethernet, provides a way for your network devices to be powered by their data cables rather than by separate power cords. In many applications, particularly in the installation of touchpanels, keyboards, sensors, wireless access points or IP telephones, PoE can significantly reduce installation costs.

Power Over Ethernet (PoE) integrates power and data onto one single cabling infrastructure, eliminating the need to have AC power adapters available at all locations. The IEEE 802.3af standard defines how products should provide and receive power

MAIN FEATURES

- Data and power carried over one Ethernet cable
- Fully compliant with IEEE802.3af standard
- IOL test report
- Diagnostic LEDs
- Full protection OTP, OCP, OVP
- Non-vented case

DESCRIPTION

As an innovative alternative to problems involving the placement and installation of power outlets, PoE Adapter enables both power and data to be carried over one Ethernet cable. This PoE Adapter provides a full 15.4 watts of power per port with no additional power management required. Output is equipped with short circuit protection and overload protection as per 802.3af specification. The output can be shorted permanently without damage. Upon power-up the self-test for the internal microprocessor software is started. After the end self-test the DC output voltage is available for powering a compliant load (to the 802.3af PoE standards). Once a load is attached to the output RJ-45 connector the detection sequence is started. Should the load be non-compliant then the LEDs will blink a code signifying the cause for non-detection. Until the correct load is applied, the LEDs will continue to blink.

APPLICATIONS

- Commercial single-room applications
- Meeting rooms, conference rooms, boardrooms
- Complete residential home automation

STANDARD BOX CONTENTS

- PoE adapter
- Power cable
- Compliance information

ORDER INFORMATION

Product code CS0327

over the data infrastructure. Using category 5/5e cable or better, PoE will provide power to PoE compatible device, such as touch panels, IP telephones, wireless LAN access points and IP cameras, for a distance up to 100 Meters. Products that are powered by PoE are generically called powered Devices (PD). PoE is already widely adopted in the market, saving up to 50% of overall installation costs by eliminating the need to install separate electrical wiring and power outlets in new or hard to reach places.

For more details please see appropriate Application Note at www.cuesystem.com.

PoE Ethernet Switch SRW208MP



SPECIFICATIONS

Ports

8x RJ-45 connectors for 10BASE-T and 100BASE-TX
2x RJ-45 connectors for 10BASE-T/100BASE-TX/1000BASE-T with 2 SFP slots
Console port
Auto MDI/MDI-X
Auto-negotiate/Manual setting

Cabling type

UTP CAT 5 or better for 10BASE-T/100BASE-TX
UTP CAT 5e or better for 1000BASE-T

LEDs

10/100 Link/Act
PoE
2 Gig Link/Act
Speed
System

PoE

802.3af compliant
Supplies up to maximum of 15.4W on 8 10/100 ports

Management

Web User Interface
SNMP
SNMP MIBs
RMON

Power supply

External AC power adapter

Physical

Dimensions 279 x 45 x 170 mm / 11" x 1.8" x 6.7"
Weight 1.2 kg / 2.7 lb

Operating environment

Temperature 0° to 40° C
Humidity 10% to 90% non-condensing

POWER OVER ETHERNET

Power over Ethernet (PoE), sometimes also called Active Ethernet, provides a way for your network devices to be powered by their data cables rather than by separate power cords. In many applications, particularly in the installation of touchpanels, keyboards, sensors, wireless access points or IP telephones, PoE can significantly reduce installation costs.

Power Over Ethernet (PoE) integrates power and data onto one single cabling infrastructure, eliminating the need to have AC power adapters available at all locations. The IEEE 802.3af standard defines how products should provide and receive power

MAIN FEATURES

- 8x 10/100 switched RJ-45 ports
- 2x 10/100/1000 switched RJ-45/miniGBIC combo ports
- PoE on all 10/100 ports supply up to 15.4 W per port
- Configuration and monitoring from a standard web browser
- Secure remote management of the switch via SSH and SSL secure channel network protocols
- Automatic MDI/MDIX detection support
- SNMP v1, v2c, v3
- Fully rack-mountable using the included accessories

DESCRIPTION

The SRW208MP switch with WebView brings a whole new level of intelligence and security to the network infrastructure. The combination of its intelligence and small size make it ideal for a conference room or training room where security and uptime are important. It offers two ports for connecting gigabit copper or optical interfaces to a core switch. The SRW208MP supports the IEEE802.3af standard for Power over Ethernet. With automatic load sensing, the power control circuitry automatically detects Power over Ethernet on an end-device before providing power. Power feeding of Ethernet is limited for fixed 10BASE-T/100BASE-TX ports. The solution can provide maximum output power per PoE port up to 15.4W on all 8 ports simultaneously. It also includes independent overload and short-circuit protection for each port and LED indicators for power status per PoE port. Network security is a top priority in any size business. Most business data networks, large and small, are unsecured. Unauthorized access to the network and mission critical data is a constant concern. The SRW208MP secures the network through 802.1X port authentication and MAC-based filtering. 802.1X requires the clients to authenticate themselves before the port will pass data.

STANDARD BOX CONTENTS

PoE Ethernet switch
AC power adapter with power cord
Two rack mounting kits incl. eight screws
CD with User Guide in PDF Format
Registration card
Console cable

ORDER INFORMATION

Product code CS0328

over the data infrastructure. Using category 5/5e cable or better, PoE will provide power to PoE compatible device, such as touch panels, IP telephones, wireless LAN access points and IP cameras, for a distance up to 100 Meters. Products that are powered by PoE are generically called powered Devices (PD). PoE is already widely adopted in the market, saving up to 50% of overall installation costs by eliminating the need to install separate electrical wiring and power outlets in new or hard to reach places.

For more details please see appropriate Application Note at www.cuesystem.com.

Software

cue

Software Control Panels

DESCRIPTION

CUE brings a new solution enabling to use any Pocket PC, PDA or Tablet PC running under Microsoft® Windows Pocket PC or any PC running under Microsoft® Windows 95/98/2000/ME/XP/Vista as Cue System control panel. The wired or wireless communication between the control panel device and the control system is based on Wi-Fi (IEEE 802.11b or 802.11g) data communication. The mobile device has to be equipped with a Wi-Fi module while the control system uses standard Access Point connected to CUEnet. The control application is designed with Cue Design Director – the standard programming tool for touch panel layout creation.

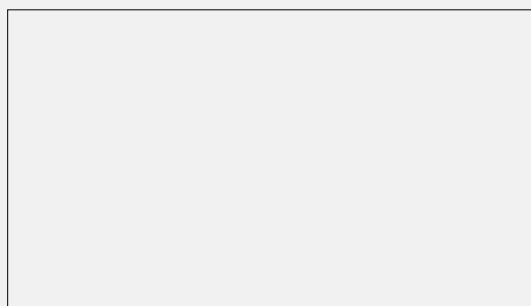
Direct Link functionality is the unique way to control any IP operated device directly without a need of control unit. The control panel has to have a runtime software pdCUE or pcCUE installed by using supplied installation program. The above-described application is a suitable addition to CUE control panels. It finds its use in commercial and educational markets as well in residential markets. In all these applications the greatest advantage is that user has its control panel in his PDA or PC Laptop, i.e. in multi room applications the control panel in a PDA can be used immediately after the room entry.

OVERVIEW

Product name	Product code	Resolution					Direct Link	Communication			Operating System		Processor	
		240 x 294	640 X 480	800 X 600	1024 X 768	User Defined		Wi-Fi	Ethernet	CUEwire	Microsoft® Windows Mobile (Window CE 3.0 or higher)	Microsoft® Windows 95/98/2000/ME /XP/Vista	StrongARM , XScale	Intel x86 compatible
pdCUE-S	SW0001	•						•			•		•	
pdCUE-M	SW0002		•					•			•		•	
pdCUE-L	SW0003			•				•			•		•	
pdCUE-X	SW0004				•			•			•		•	
pcCUE	SW0005					•			•	•		•		•
pdCUE-S /d	SW0006	•					•	•			•		•	
pdCUE-M /d	SW0007		•				•	•			•		•	
pdCUE-L /d	SW0008			•			•	•			•		•	
pdCUE-X /d	SW0009				•		•	•			•		•	
pcCUE /d	SW0010					•	•		•	•		•		•

cue

AS GOOD AS IT LOOKS



WWW.CUESYSTEM.COM